



The Nexus™ Lock System from Truth Hardware is the latest in two-point and multi-point lockset options for sliding patio doors. Designed to be compatible with all industry standard handle sets, the Nexus Locking Systems have a number of standard features that have been proven by our customers to set Truth apart from the competition.

NEXUS TWO-POINT SYSTEM

Combining both versatility and easy installation, the Nexus System is suitable for either wood or vinyl door applications, and is available in three unique mounting configurations; Flush Mount, Face Mount (16mm or 20mm Euro groove), or Recessed. The Nexus 2 Point Lock is available in either stainless steel or carbon steel. The Nexus Two-Point Lock System utilizes two opposing locking points (hooks) that offers an intuitive single point of horizontal adjustment for the reach of the lock hooks.

NEXUS MULTI-POINT LOCK SYSTEM

The Nexus Multi-Point Lock System which is offered in stainless steel as a standard has three individually adjustable locking points with opposing upper and lower lock points to prevent the door from being lifted which further enhances its security. A greater adjustment range at the remote hooks provides the additional forgiveness needed on doors which may be out-of-square due to poor installation.

MATERIAL & FINISHES: Standard features for the Nexus family of lock systems includes:

ANTI-SLAM FEATURE: Truth's "anti-slam" feature prevents potential damage to the door or locking system hooks by not allowing the hooks to be extended unless the door is closed against the frame. This feature ensures that when the lock is operated it is close enough to properly engage the keeper avoiding a "false" sense of lock up.

STANDARD & EXTENDED REACH:

The Nexus Locking System has two

options for the lock, standard and extended reach, which each have a horizontal adjustment feature built into them to offer additional forgiveness.

INDUSTRY TESTED: The Nexus Lock Systems have been built to help customers meet the AAMA and CAWM forced entry requirements. The Nexus Two-Point System can exceed 2,800 lbs. of pulling force and the Multi-Point System exceeds 3,000 lbs.

KEEPERS:

Truth realizes that no two door systems are exactly alike; therefore we have designed multiple keeper options to accommodate your application. In addition, a special "keeper locator" makes the installation of the keeper virtually fool proof.

WARRANTY:

Protected under the terms of the Truth Warranty for Window and Door Manufacturers and Authorized Distributors. Refer to Truth's Terms and Conditions for further details.

ORDERING INFORMATION:

Because of the variety of sliding patio door designs on the market, Truth Hardware suggests that you contact Truth's Technical Service Department to help you identify the components that will best meet your requirements. To assist us in helping you identify the product that you need, please be prepared to provide Truth with the type and style of profile that you are mounting your hardware to.

TRUTH TIPS:

1. A Truth Hardware Secondary Patio Door Lock or Limiter can be added for applications requiring additional security.
2. Bumper guards (Truth item number 22082.XX), to keep door sash from contacting the opposite jamb during its travel, are highly recommended (see Handleset Accessories section).
3. If hardware shown cannot be fitted to the door because of door/hardware



Face - Mount



Recessed - Mount



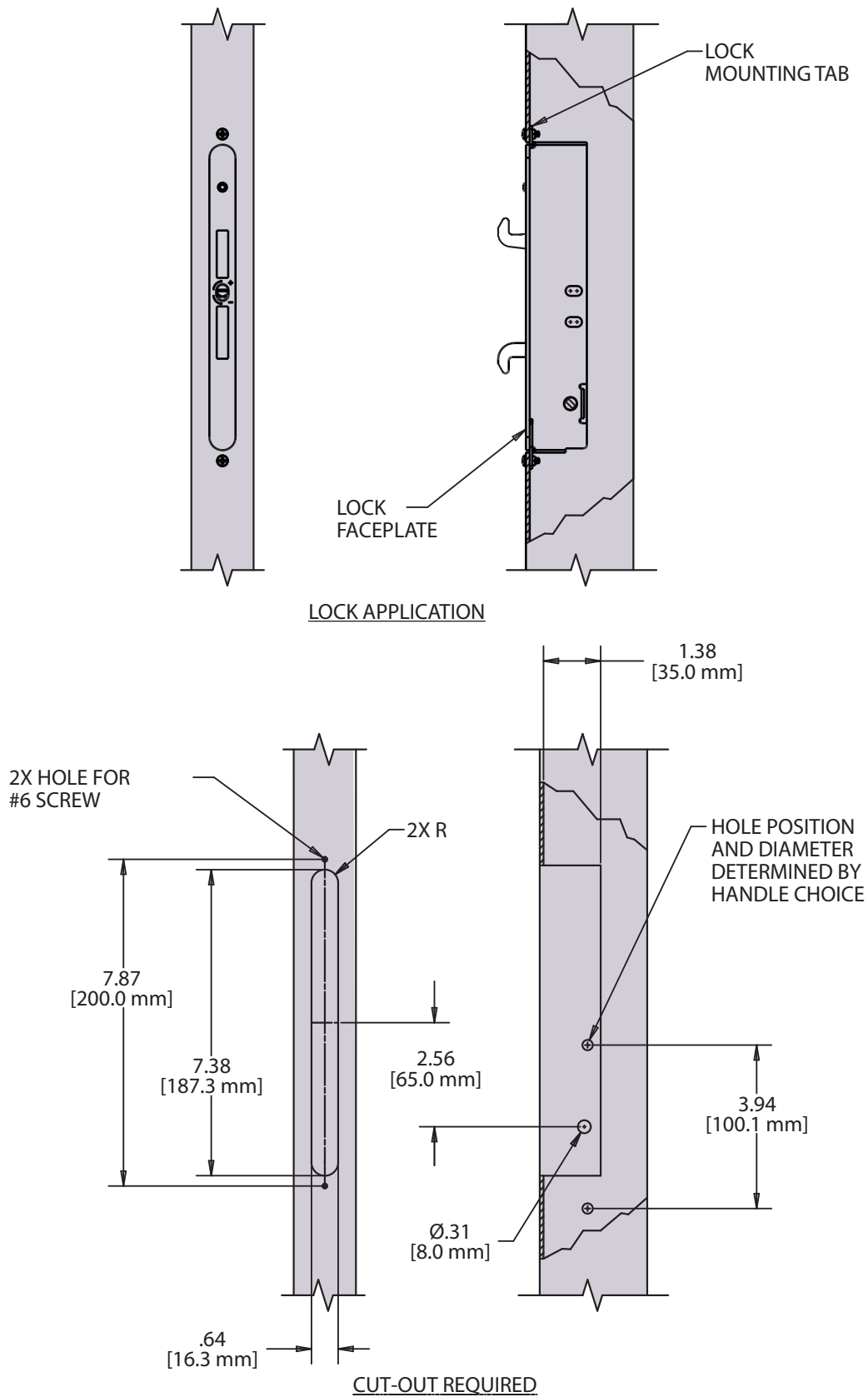
Multi - Point

interference, contact Truth for other available options.

4. Installation of longer screws into the keeper rail will increase security. Screws long enough to reach the rough opening frame are recommended.
5. For easy correction of out of square or racked door installations, the use of Jamb Jack (frame adjusters) are recommended. Frame adjustment can improve both weather seal tightness and door operation over the life of the door.
6. For vinyl applications, mounting screws should pass through two PVC walls or one PVC wall and one insert wall. For this reason, it may be necessary to use a longer screw than is recommended.

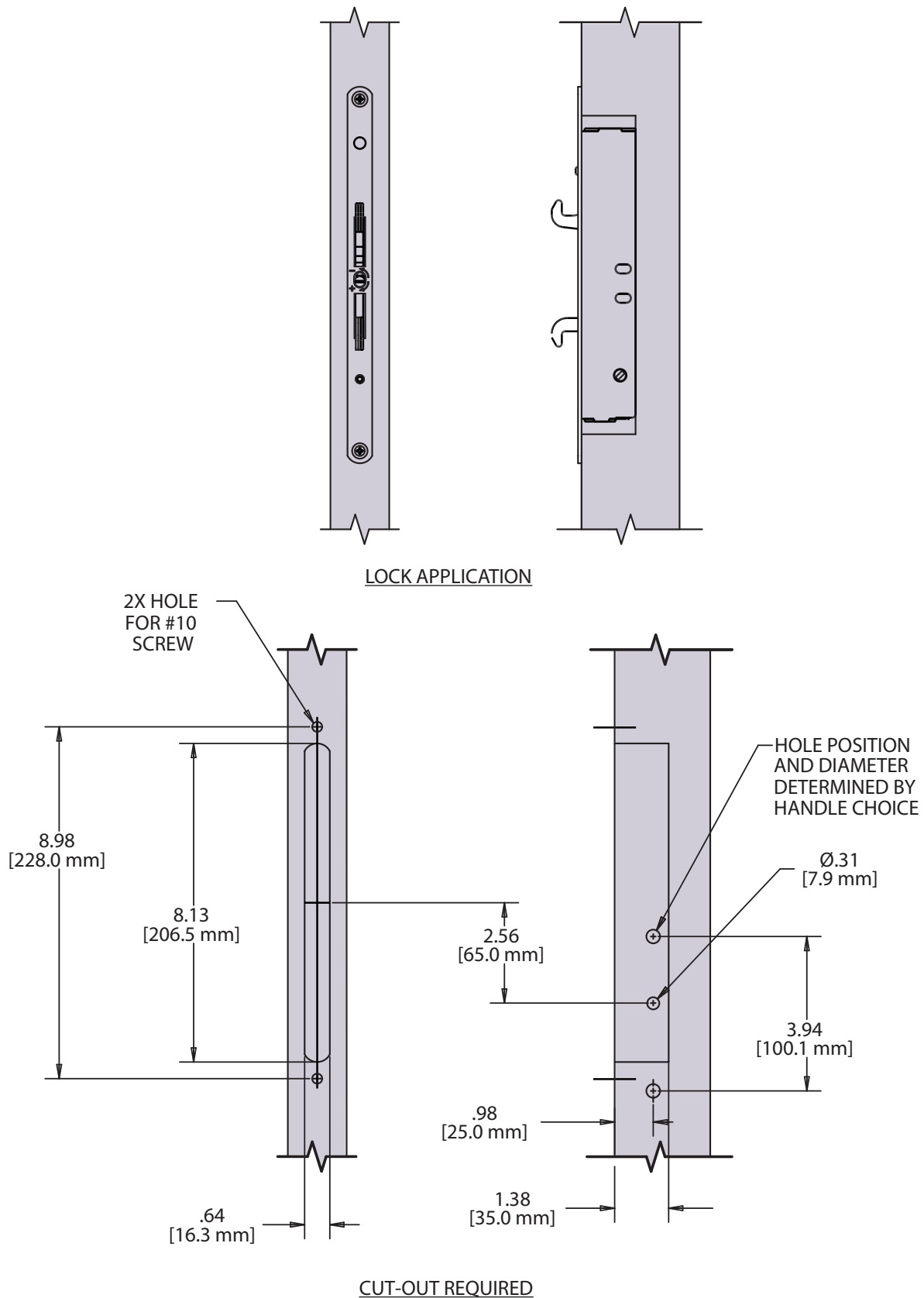
NEXUS TWO-POINT MORTISE LOCK

FIG. 1 TWO POINT MORTISE, SHORT FACEPLATE APPLICATION

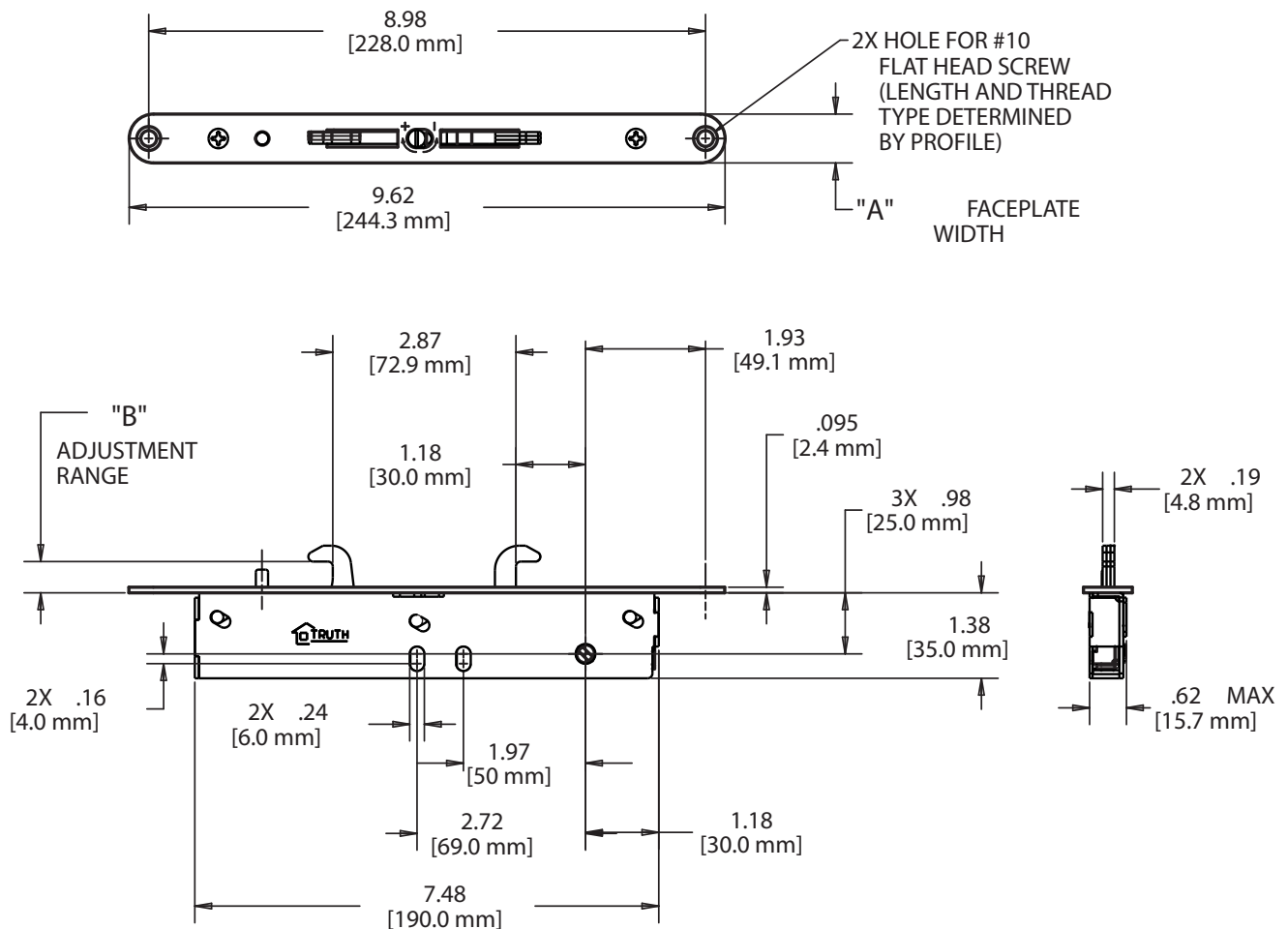


NEXUS TWO-POINT MORTISE LOCK

FIG. 3 TWO POINT MORTISE LOCK, LONG FACEPLATE APPLICATION
(16mm AND 20 mm FACEPLATE)



**FIG. 4 TWO POINT MORTISE LOCK, LONG FACEPLATE
(16mm AND 20 mm FACEPLATE)**



NOTES:

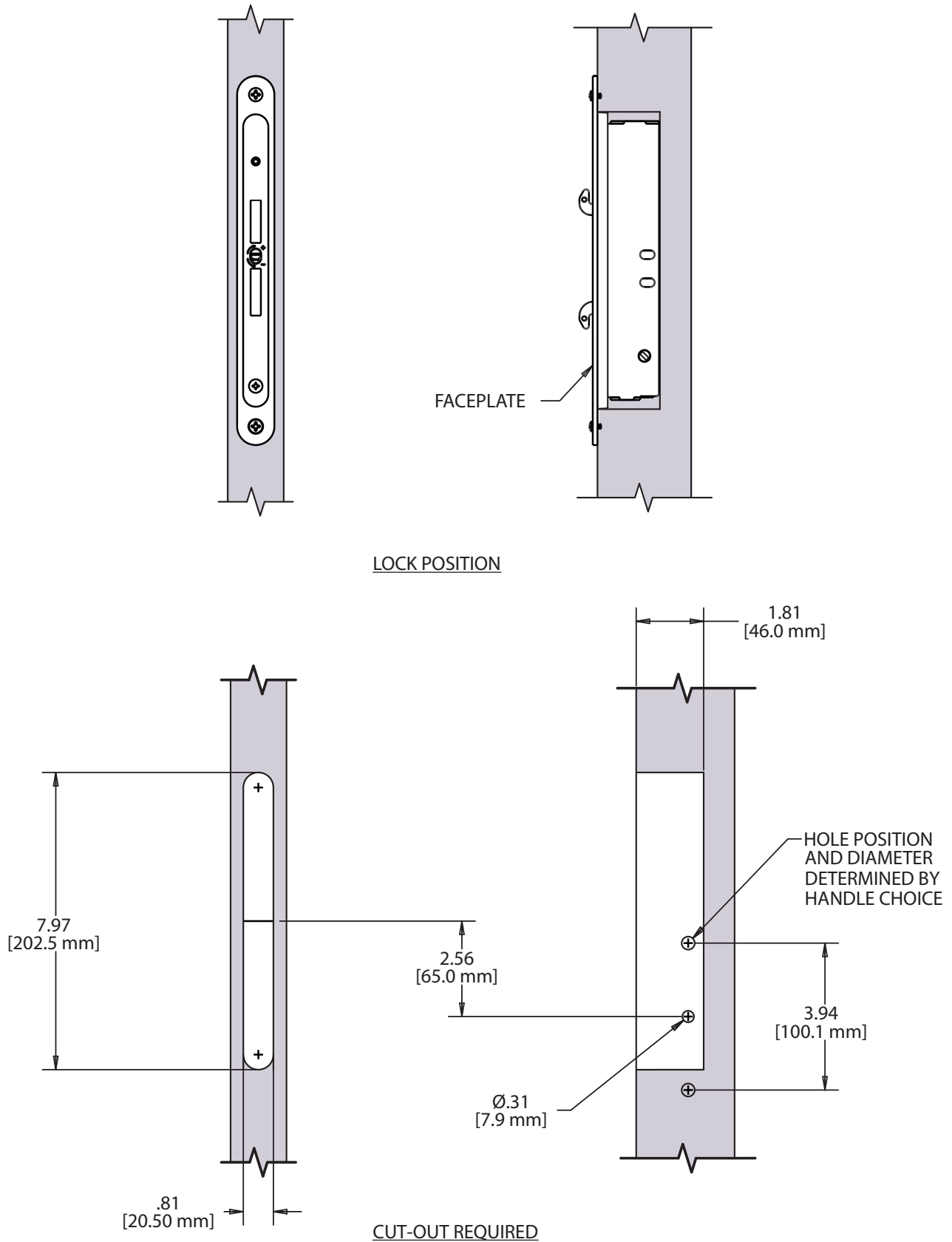
HOOK ADJUSTMENTS RANGE: STANDARD .38 (9.6 mm)
.25 (6.3 mm)

EXTENDED .49 (12.4 mm)
.36 (9.1 mm)

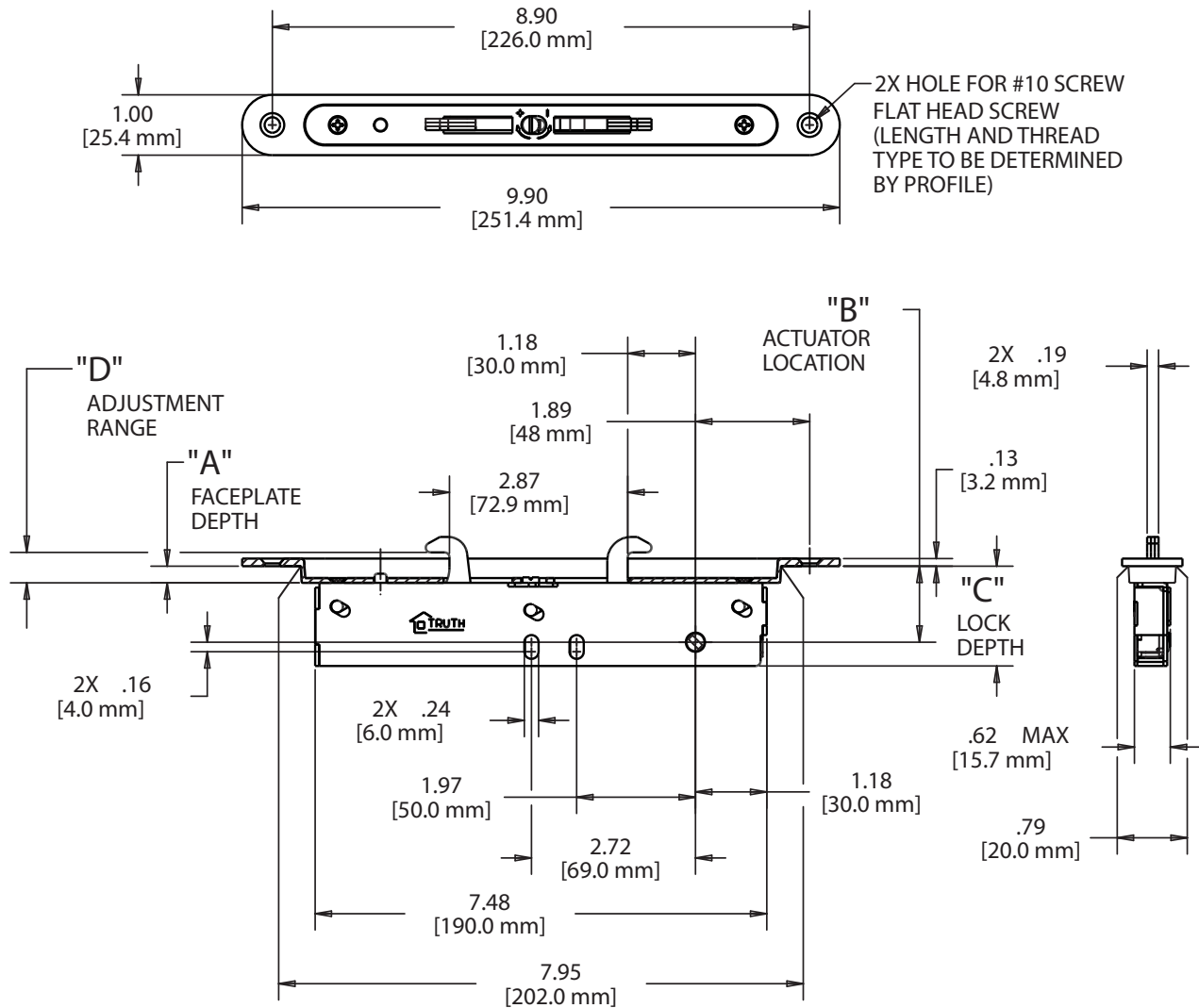
PART NUMBER	MATERIAL	"A" FACEPLATE	"B" ADJUSTMENT RANGE
13318	STEEL	.63(16 mm)	STANDARD
13319	STAINLESS STEEL	.63(16 mm)	STANDARD
13320	STEEL	.63(16 mm)	EXTENDED
13321	STAINLESS STEEL	.63(16 mm)	EXTENDED
13322	STEEL	.79(20 mm)	STANDARD
13323	STAINLESS STEEL	.79(20 mm)	STANDARD
13324	STEEL	.79(20 mm)	EXTENDED
13325	STAINLESS STEEL	.79(20 mm)	EXTENDED

NEXUS TWO-POINT MORTISE LOCK

FIG. 5 TWO POINT MORTISE LOCK RECESSED FACEPLATE APPLICATION



**FIG. 6 TWO POINT MORTISE LOCK, RECESSED FACEPLATE
(STEEL)**



NOTES:

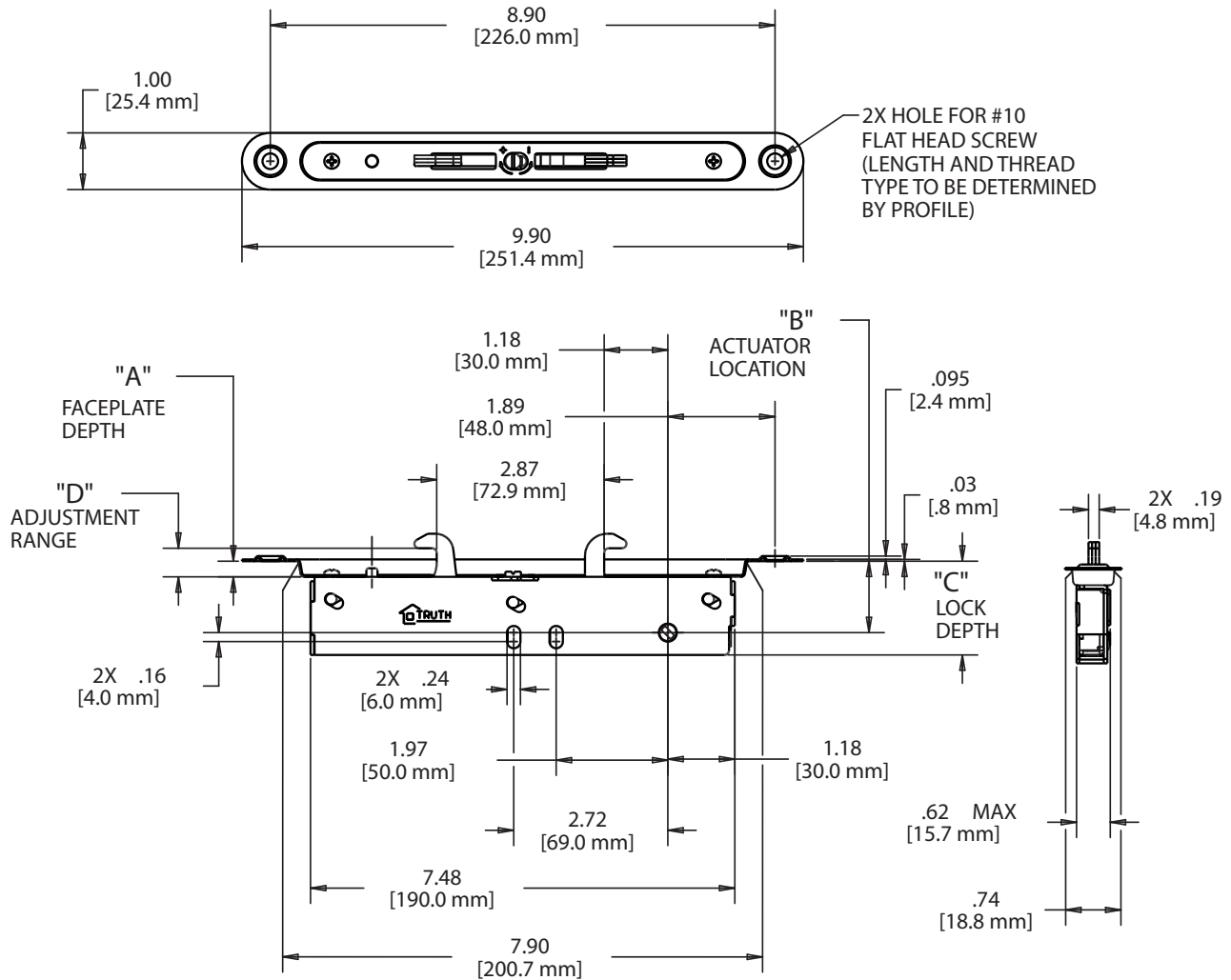
HOOK ADJUSTMENTS RANGE: STANDARD .38 (9.6 mm)
.25 (6.3 mm)

EXTENDED .49 (12.4 mm)
.36 (9.1 mm)

PART NUMBER	"A" FACEPLATE DEPTH	"B" ACTUATOR LOCATION	"C" LOCK DEPTH	"D" ADJUSTMENT RANGE
13326	.28(7.0 mm)	1.26(32.0 mm)	1.65(42.4 mm)	STANDARD
13328	.28(7.0 mm)	1.26(32.0 mm)	1.65(42.4 mm)	EXTENDED
13303	.19(4.7 mm)	1.17(29.7 mm)	1.56(39.6 mm)	STANDARD
13410	.19(4.7 mm)	1.17(29.7 mm)	1.56(39.6 mm)	EXTENDED

NEXUS TWO-POINT MORTISE LOCK

**FIG. 7 TWO POINT MORTISE LOCK, RECESSED FACEPLATE
(STAINLESS STEEL)**

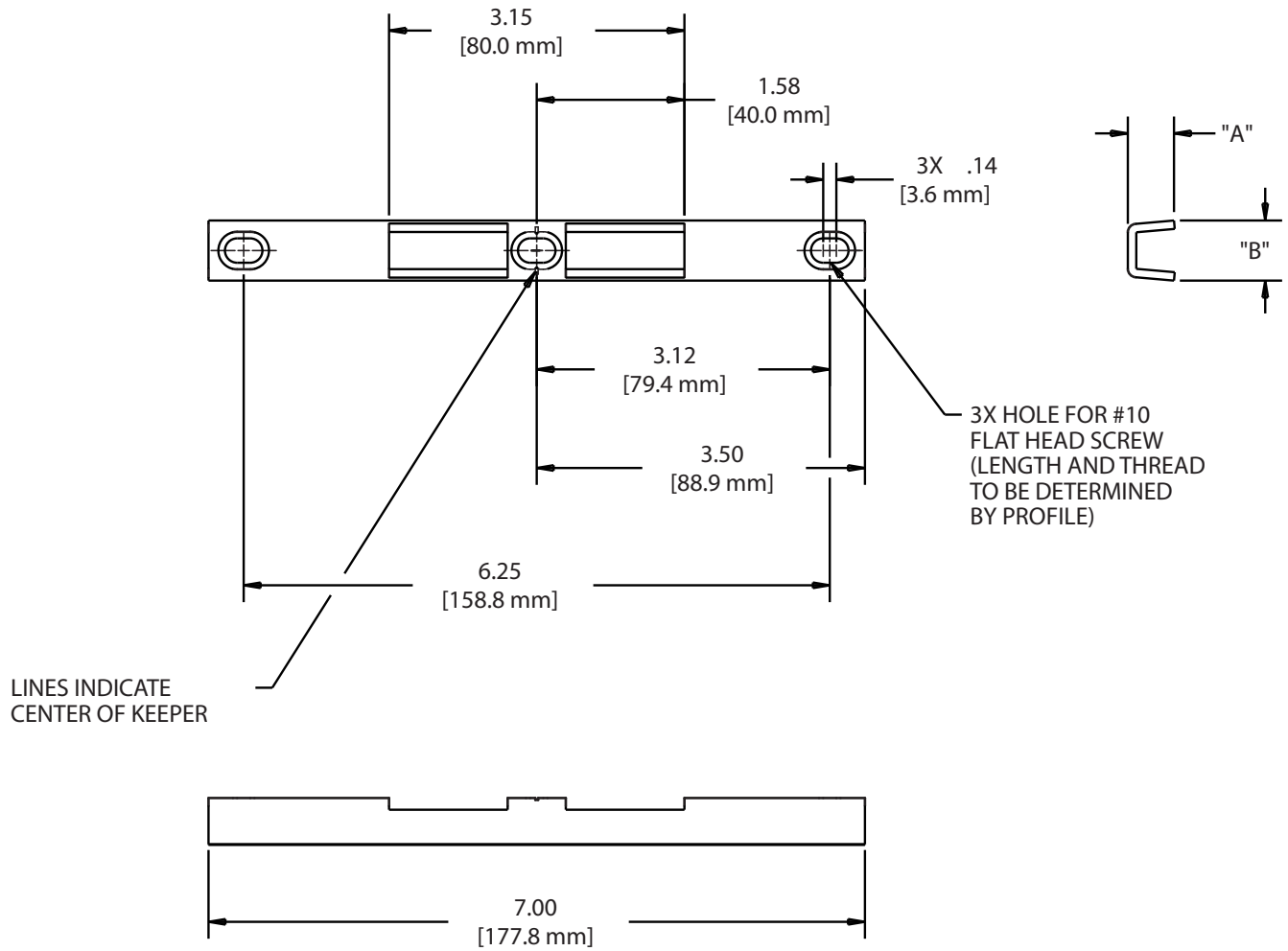


NOTES:

HOOK ADJUSTMENTS RANGE:	STANDARD	.38 (9.6 mm)
		.25 (6.3 mm)
	EXTENDED	.49 (12.4 mm)
		.36 (9.1 mm)

PART NUMBER	"A" FACEPLATE DEPTH	"B" ACTUATOR LOCATION	"C" LOCK DEPTH	"D" ADJUSTMENT RANGE
13327	.28(7.0 mm)	1.26(32.0 mm)	1.65(41.9 mm)	STANDARD
13329	.28(7.0 mm)	1.26(32.0 mm)	1.65(41.9 mm)	EXTENDED
13409	.19(4.7 mm)	1.17(29.7 mm)	1.56(39.6 mm)	STANDARD
13411	.19(4.7 mm)	1.17(29.7 mm)	1.56(39.6 mm)	EXTENDED

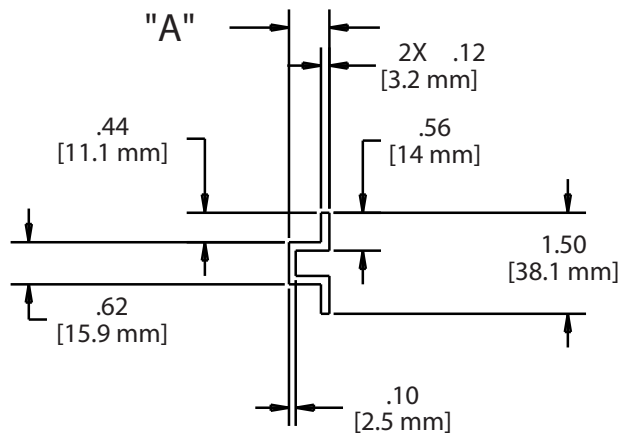
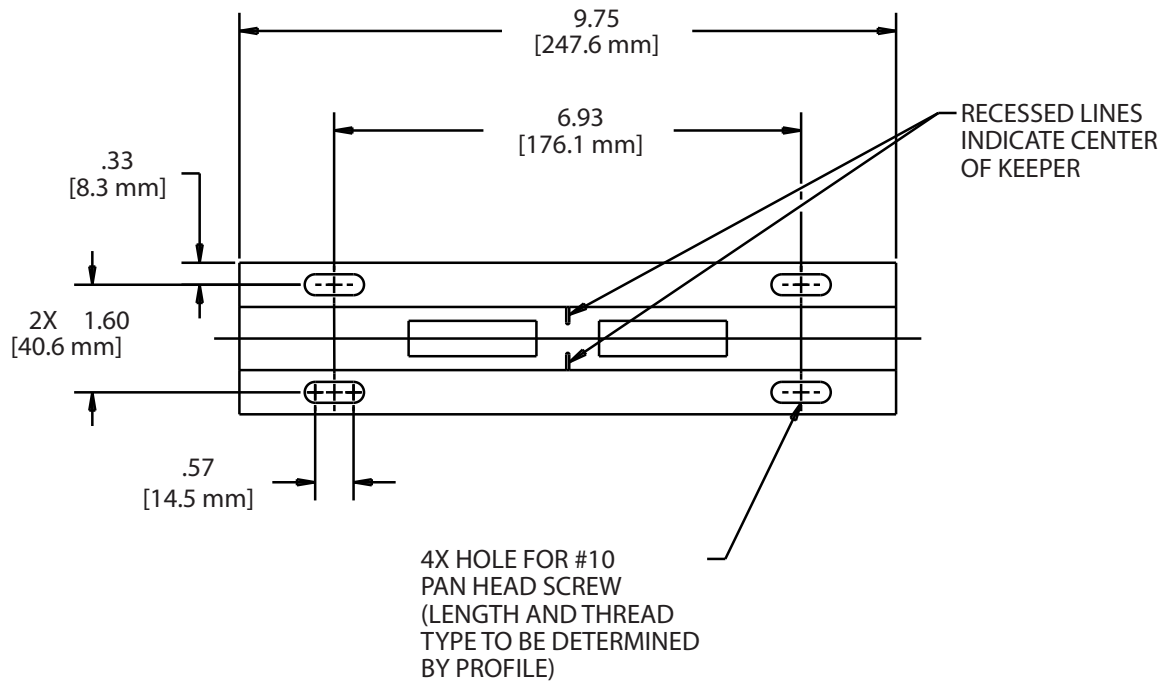
FIG. 8 KEEPER, TWO POINT MORTISE LOCK



PART NUMBER	MATERIAL	MATERIAL THICKNESS	"A" DIMENSION	"B" DIMENSION
33182	STEEL	.09(2.3 mm)	.50(12.7 mm)	.64(16.3 mm)
33183	STAINLESS STEEL	.08(2.0 mm)	.50(12.7 mm)	.64(16.3 mm)
33184	STEEL	.09(2.3 mm)	1.00(25.4 mm)	.73(18.5 mm)
33185	STAINLESS STEEL	.08(2.0 mm)	1.00(25.4 mm)	.73(18.5 mm)
33291	STEEL	.09(2.3 mm)	.75(19.0 mm)	.68(17.3 mm)
33292	STAINLESS STEEL	.08(2.0 mm)	.75(19.0 mm)	.68(17.3 mm)

NEXUS TWO-POINT MORTISE LOCK

FIG. 9 KEEPER, TWO POINT MORTISE LOCK



PART NUMBER	"A" KEEPER HEIGHT
33194	.60(15.2 mm)
33355	.50(12.7 mm)

FIG. 10 KEEPER, TWO POINT MORTISE LOCK PLATE

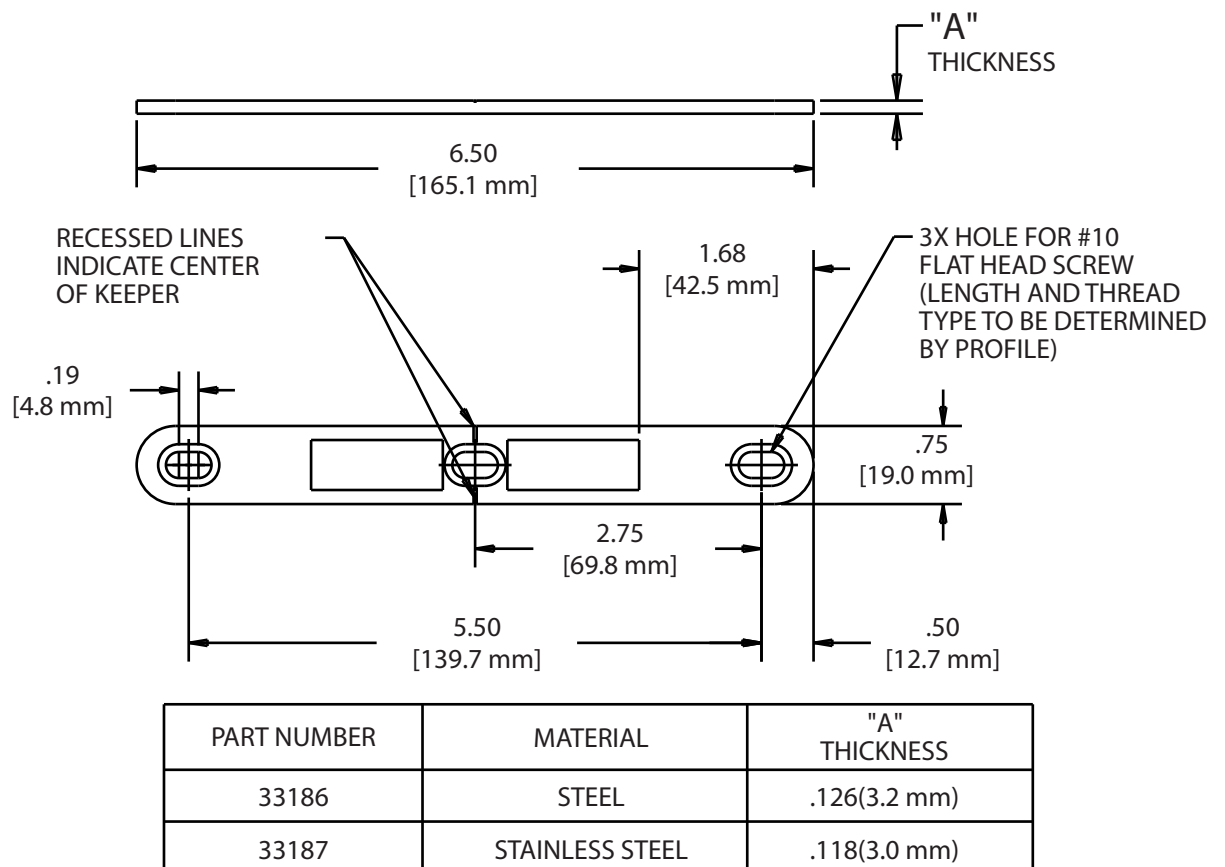
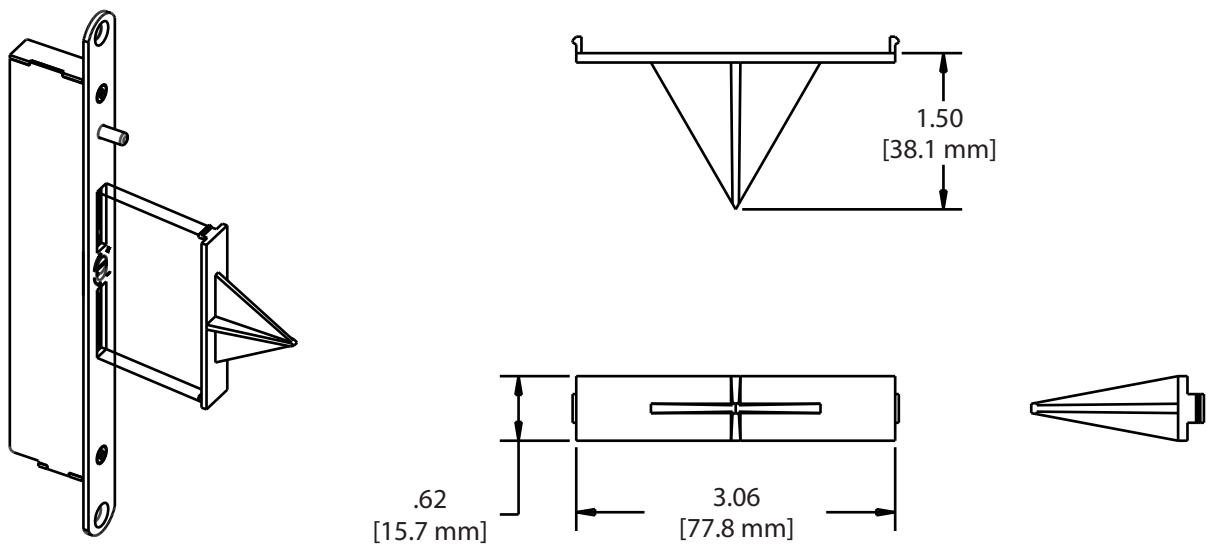
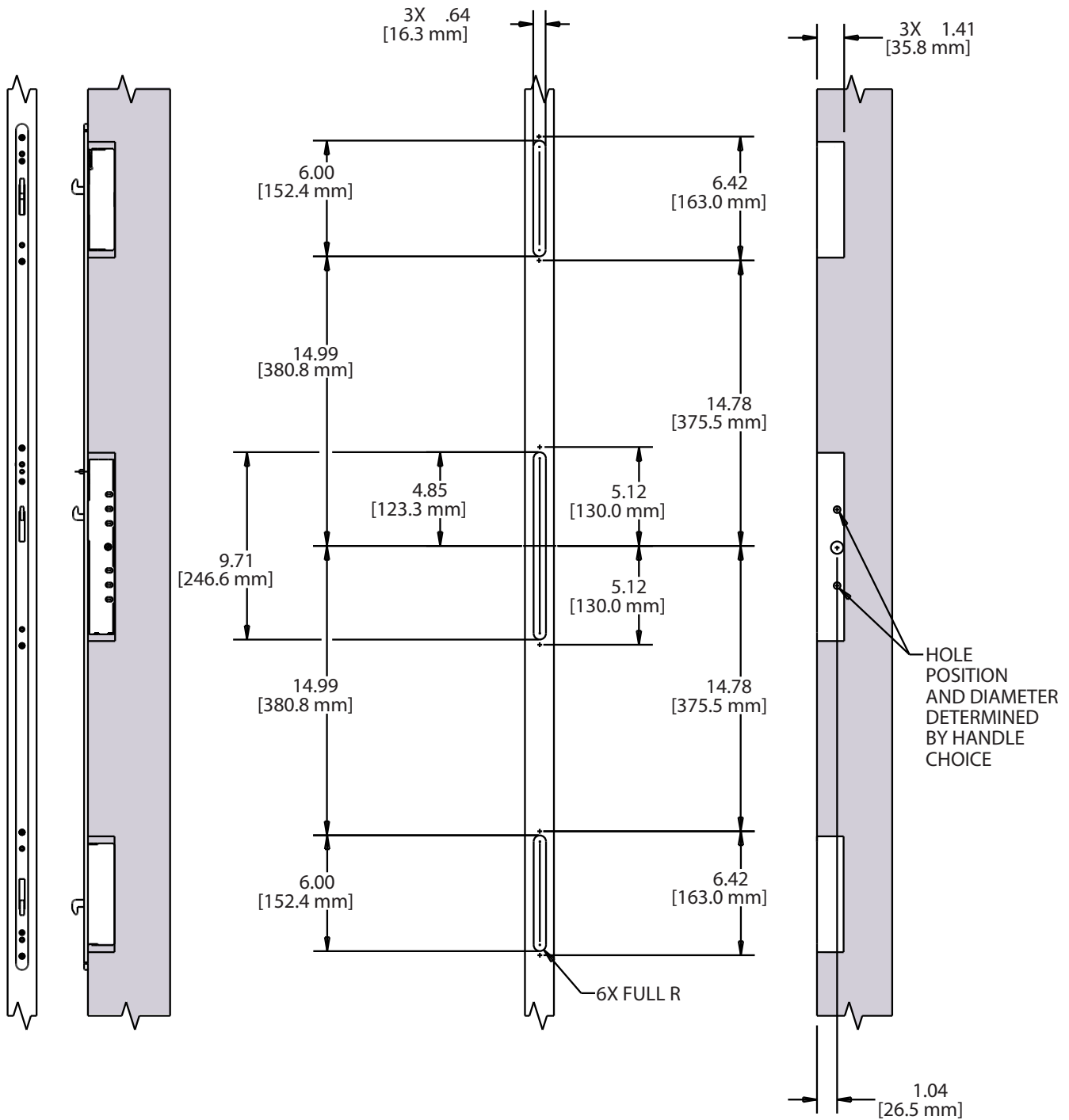


FIG. 11 33276 KEEPER LOCATOR, TWO POINT MORTISE LOCK PLATE



NEXUS THREE-POINT MORTISE LOCK

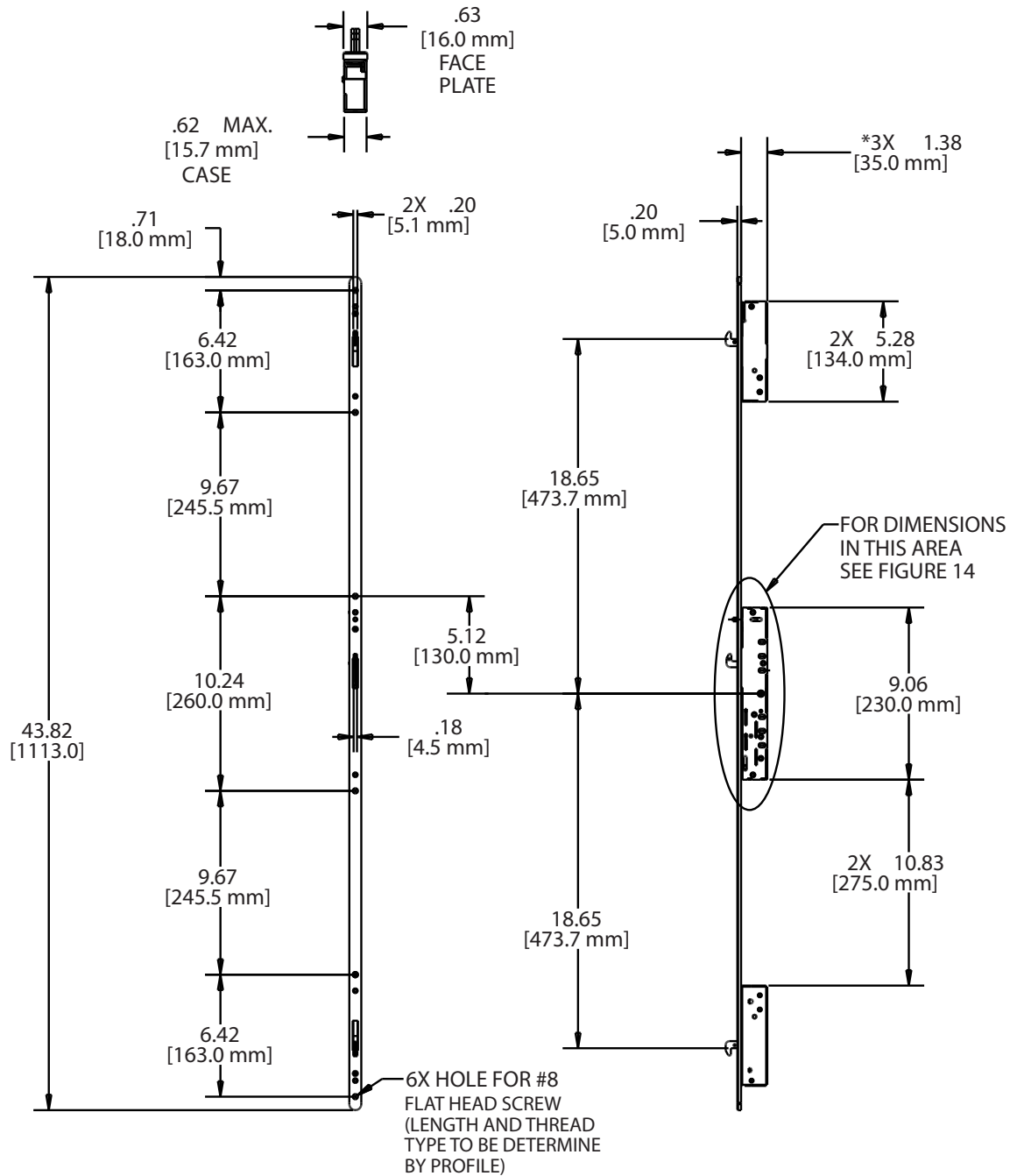
FIG. 12 THREE POINT MORTISE LOCK, FACE MOUNT APPLICATION



HARDWARE APPLICATION

CUT OUT REQUIRED

FIG. 13 THREE POINT MORTISE LOCK, FACE MOUNT STANDARD BACKSET



* - DIMENSION FROM
UNDERSIDE OF FACE PLATE

PART NUMBER	HOOK LENGTH	"A" ADJUSTMENT RANGE SEE FIG. 14	"B" ADJUSTMENT RANGE SEE FIG. 14
13340	STANDARD	.18-.31(4.6-7.8mm)	.18-.35 (4.6-8.8mm)
13341	EXTENDED	.28-.41 (7.1-10.3mm)	.30-.46 (7.6-11.8mm)

NEXUS THREE-POINT MORTISE LOCK

FIG. 14 THREE POINT MORTISE LOCK, FACE MOUNT DETAIL, STANDARD BACKSET

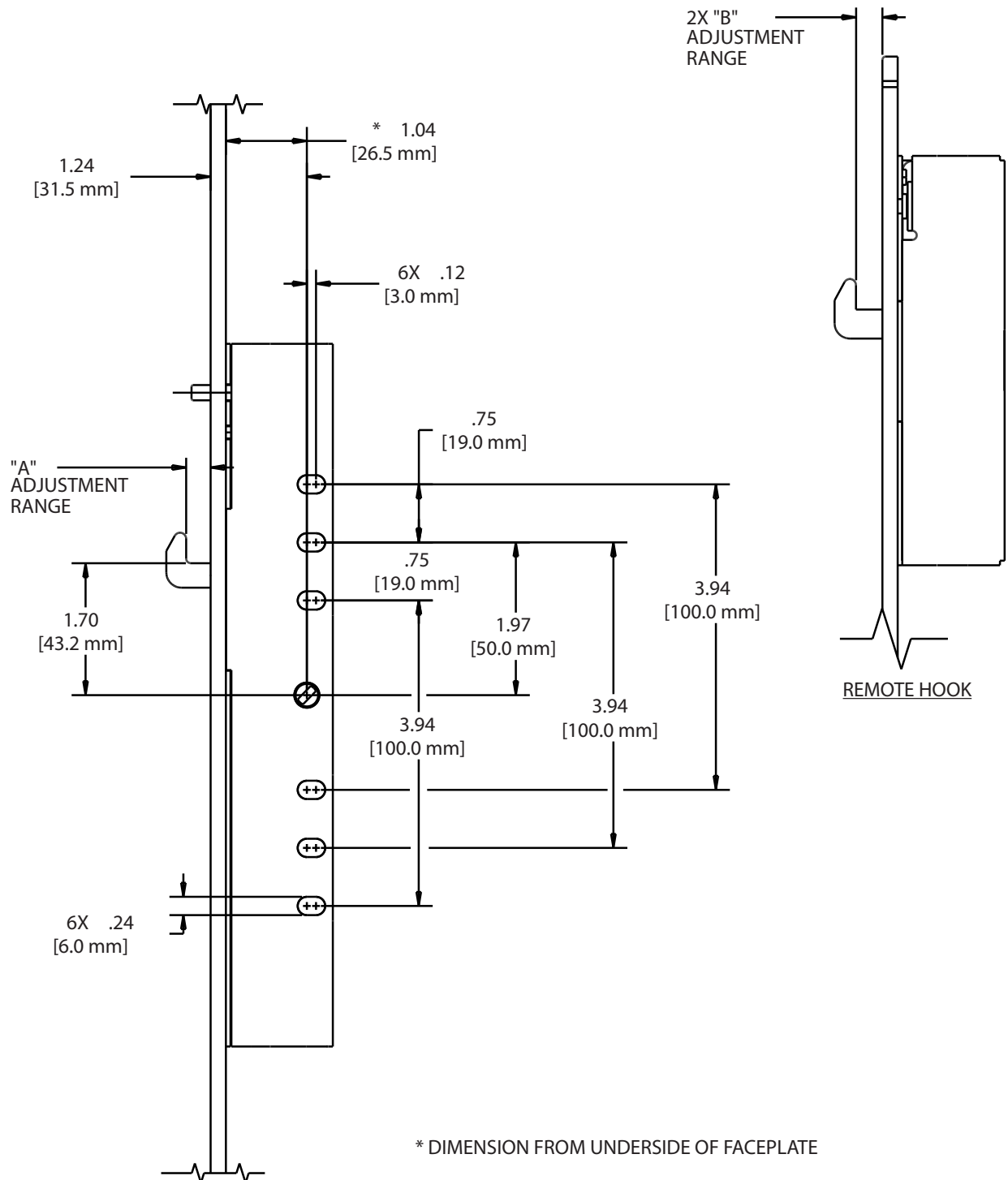
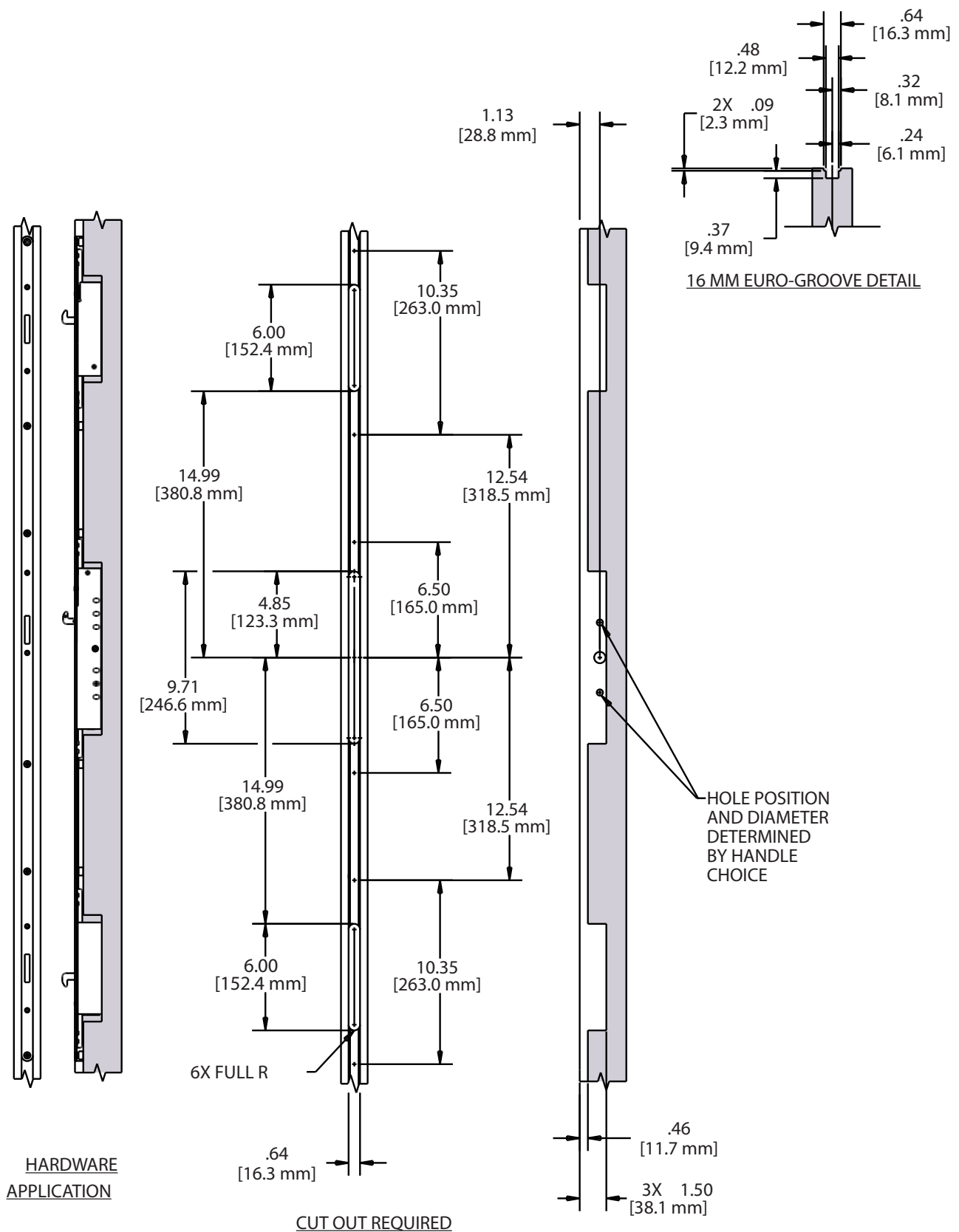
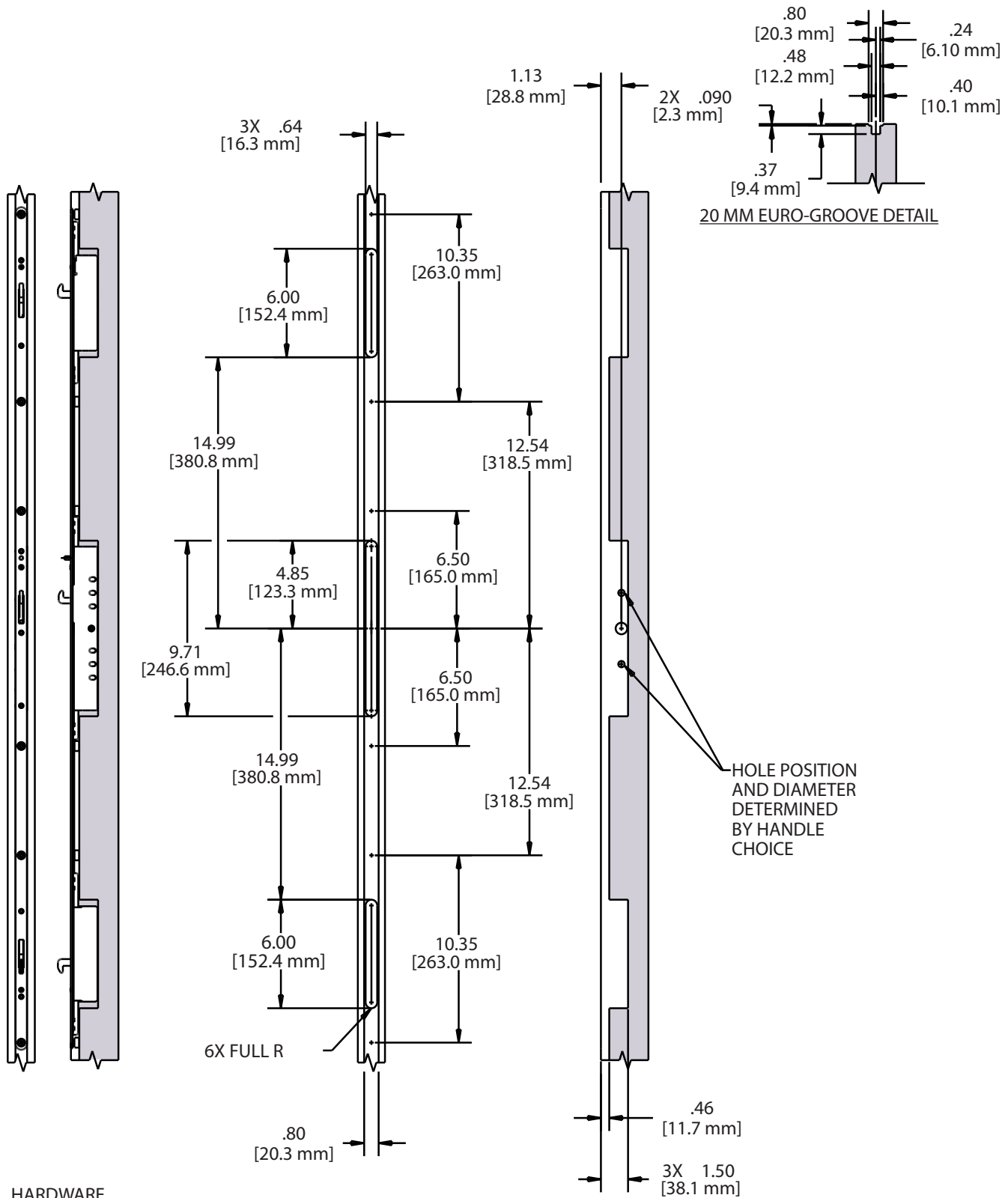


FIG. 15 THREE POINT MORTISE LOCK, 16mm EURO-GROOVE APPLICATION STANDARD BACKSET



NEXUS THREE-POINT MORTISE LOCK

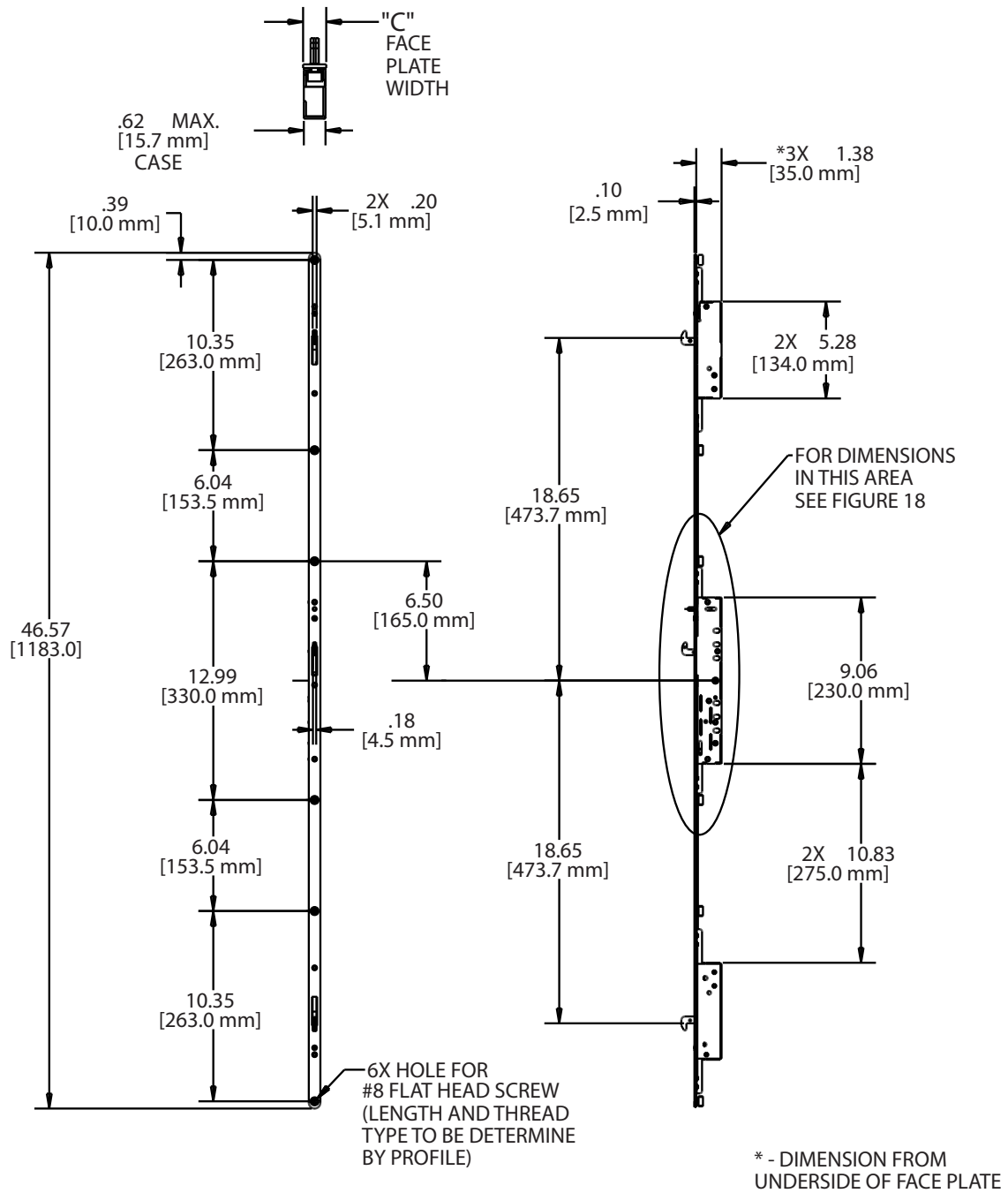
FIG. 16 THREE POINT MORTISE LOCK, 20mm EURO-GROOVE APPLICATION STANDARD BACKSET



HARDWARE
APPLICATION

CUT OUT REQUIRED

FIG. 17 THREE POINT MORTISE LOCK EURO-GROOVE STANDARD BACKSET (16mm and 20mm)



PART NUMBER	HOOK LENGTH	"A" ADJUSTMENT RANGE SEE FIG. 18	"B" ADJUSTMENT RANGE SEE FIG. 18	"C" FACE PLATE
13149	STANDARD	.15-.28(3.9-7.1 mm)	.15-.32(3.9-8.1 mm)	.63(16 mm)
13150	EXTENDED	.27-.40(6.9-10.1 mm)	.27-.44(6.9-11.1 mm)	.63(16 mm)
13151	STANDARD	.15-.28(3.9-7.1 mm)	.15-.32(3.9-8.1 mm)	.79(20 mm)
13152	EXTENDED	.27-.40(6.9-10.1 mm)	.27-.44(6.9-11.1 mm)	.79(20 mm)

NEXUS THREE-POINT MORTISE LOCK

FIG. 18 THREE POINT MORTISE LOCK, EURO-GROOVE DETAIL, STANDARD BACKSET

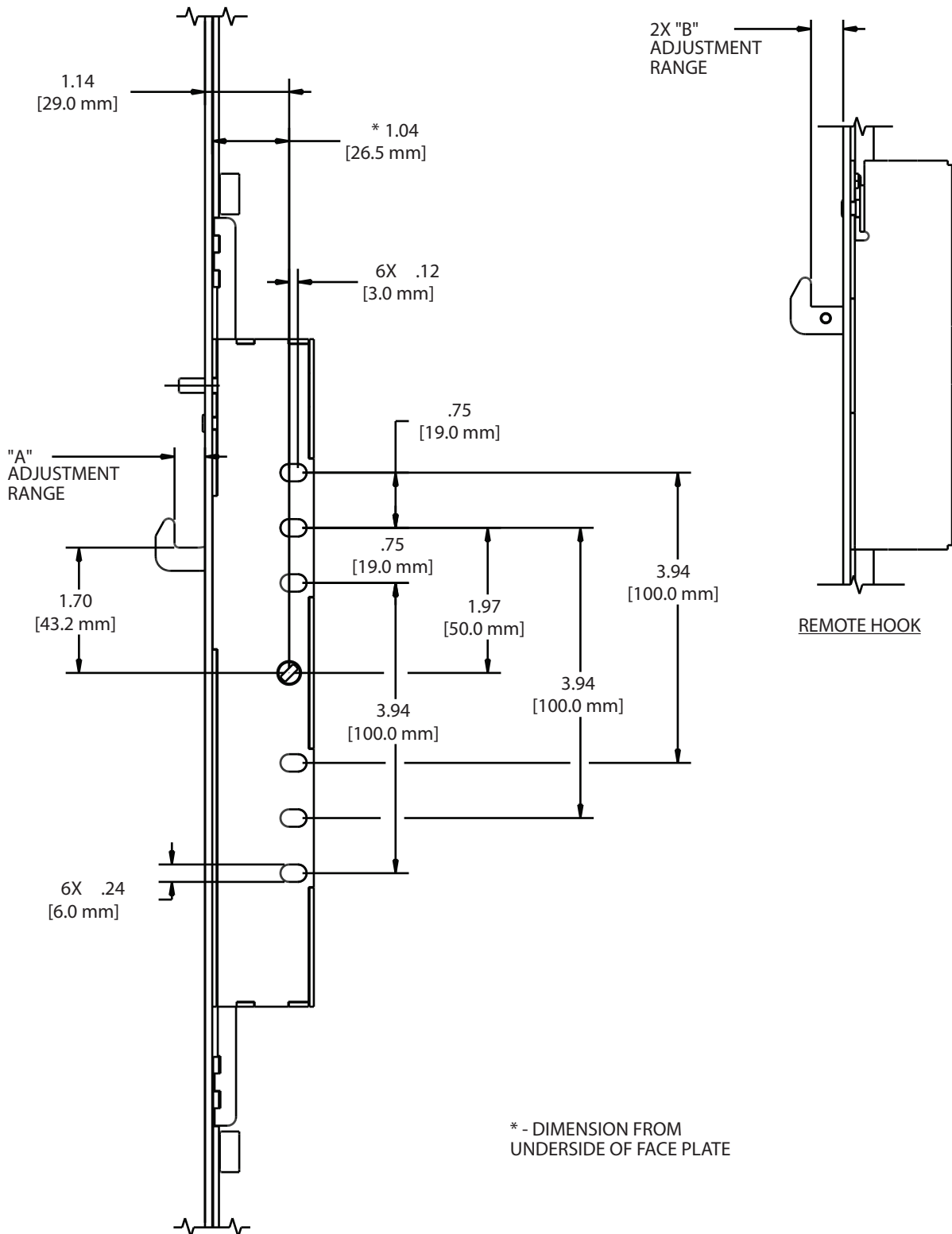
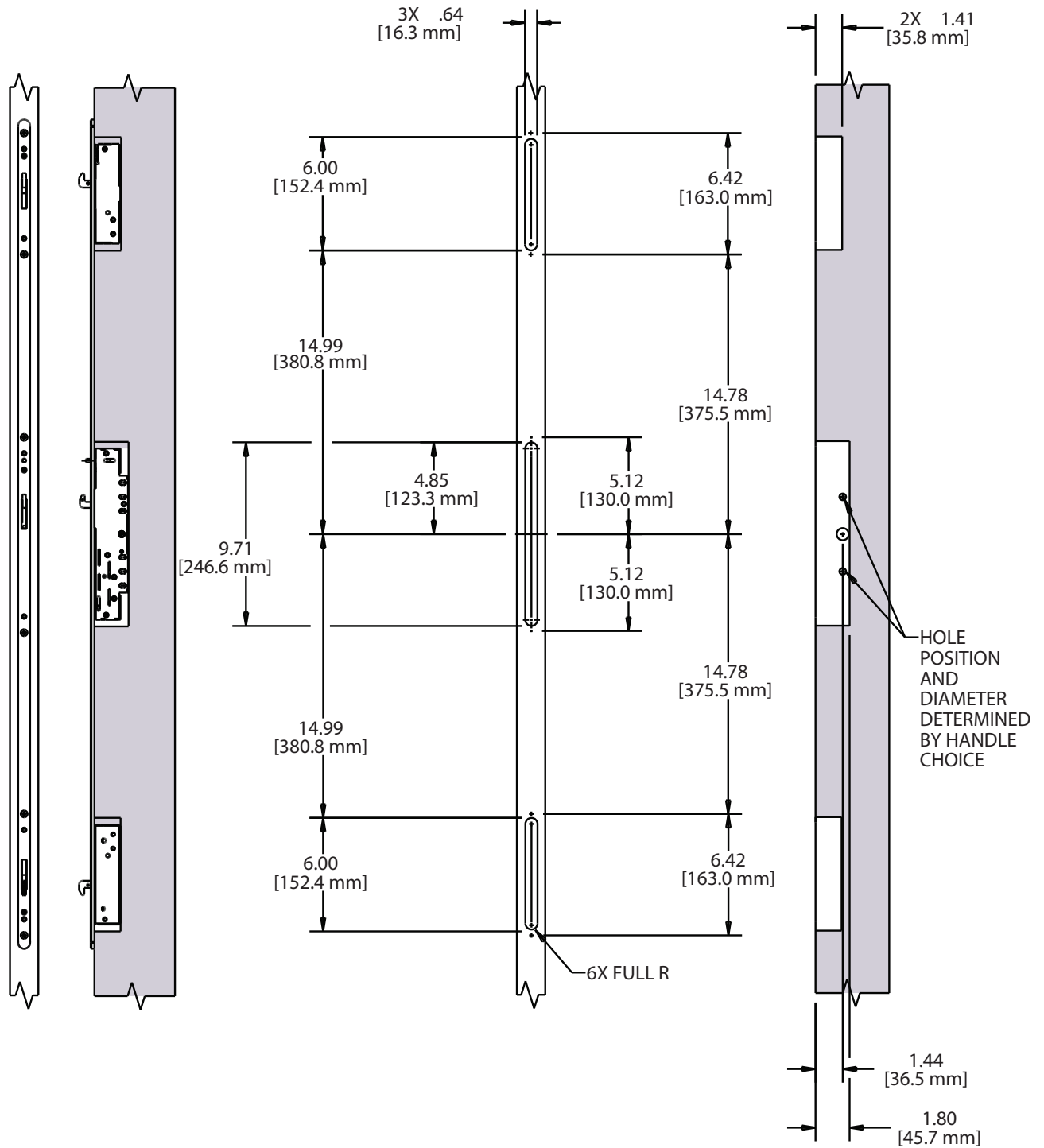


FIG. 19 THREE POINT MORTISE LOCK, FACE MOUNT APPLICATION DEEP BACKSET

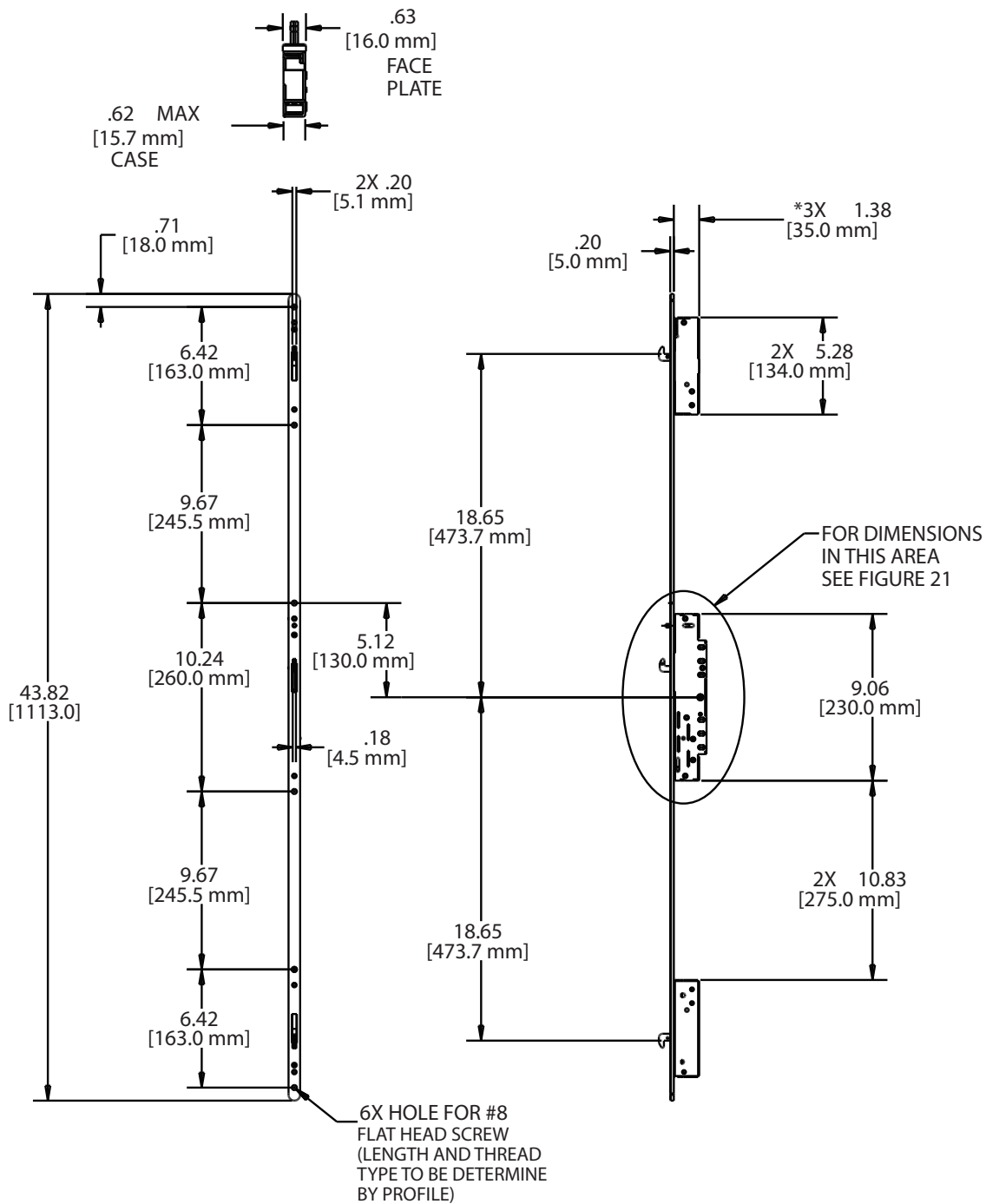


LOCK APPLICATION

CUT OUT REQUIRED

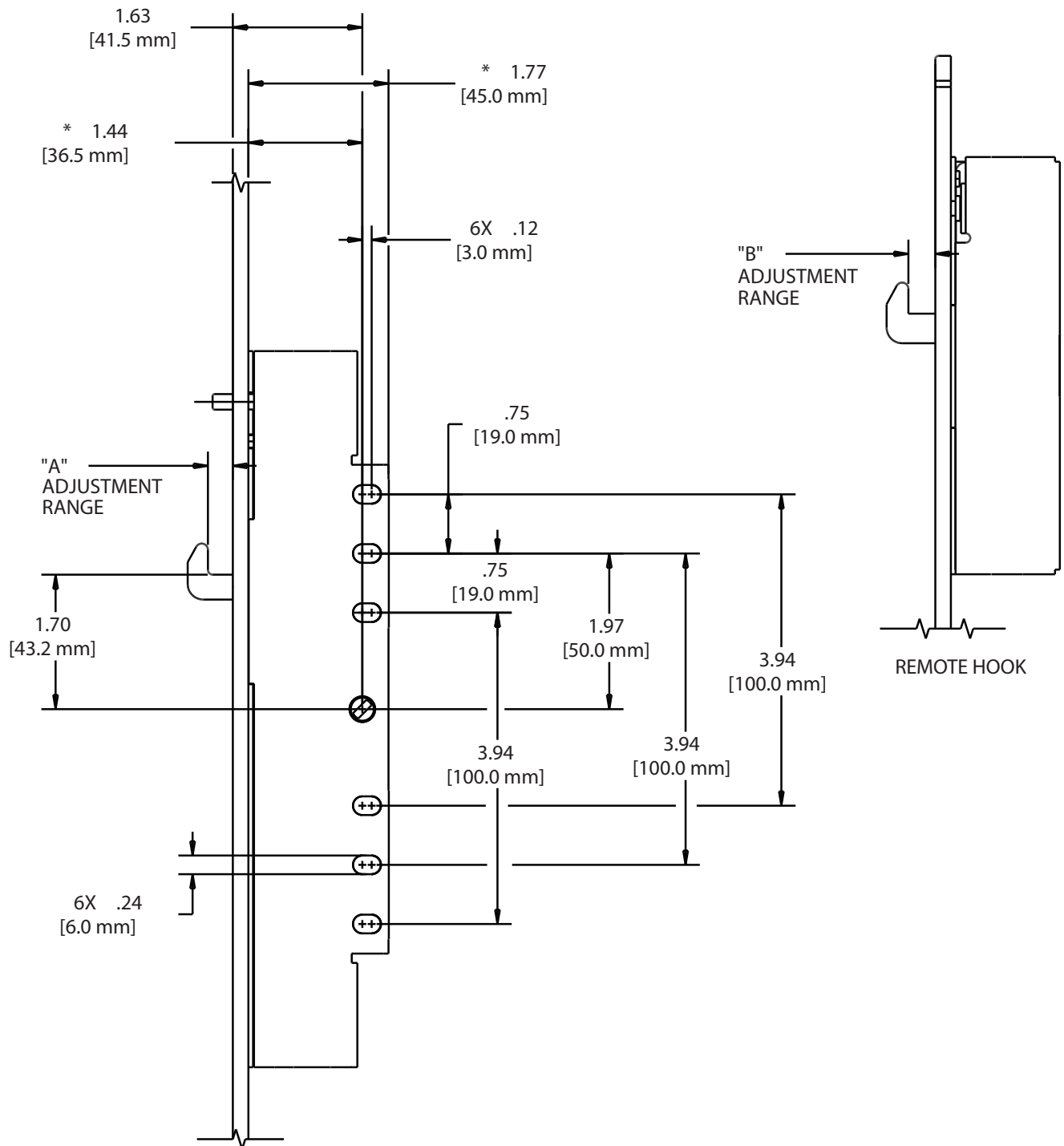
NEXUS THREE-POINT MORTISE LOCK

FIG. 20 THREE POINT MORTISE LOCK, FACE MOUNT, DEEP BACKSET



PART NUMBER	HOOK LENGTH	"A" ADJUSTMENT RANGE SEE FIG. 21	"B" ADJUSTMENT RANGE SEE FIG. 21
13781	STANDARD	.18-.31 (4.6-7.8mm)	.18-.35 (4.6-8.8mm)
13782	EXTENDED	.28-.41 (7.1-10.3mm)	.30-.46 (7.6-11.8mm)

FIG. 21 THREE POINT MORTISE LOCK, FACE MOUNT DETAIL, DEEP BACKSET



* DIMENSION FROM UNDERSIDE OF FACEPLATE

NEXUS THREE-POINT MORTISE LOCK

FIG. 22 THREE POINT MORTISE LOCK, 16mm EURO-GROOVE APPLICATION, DEEP BACKSET

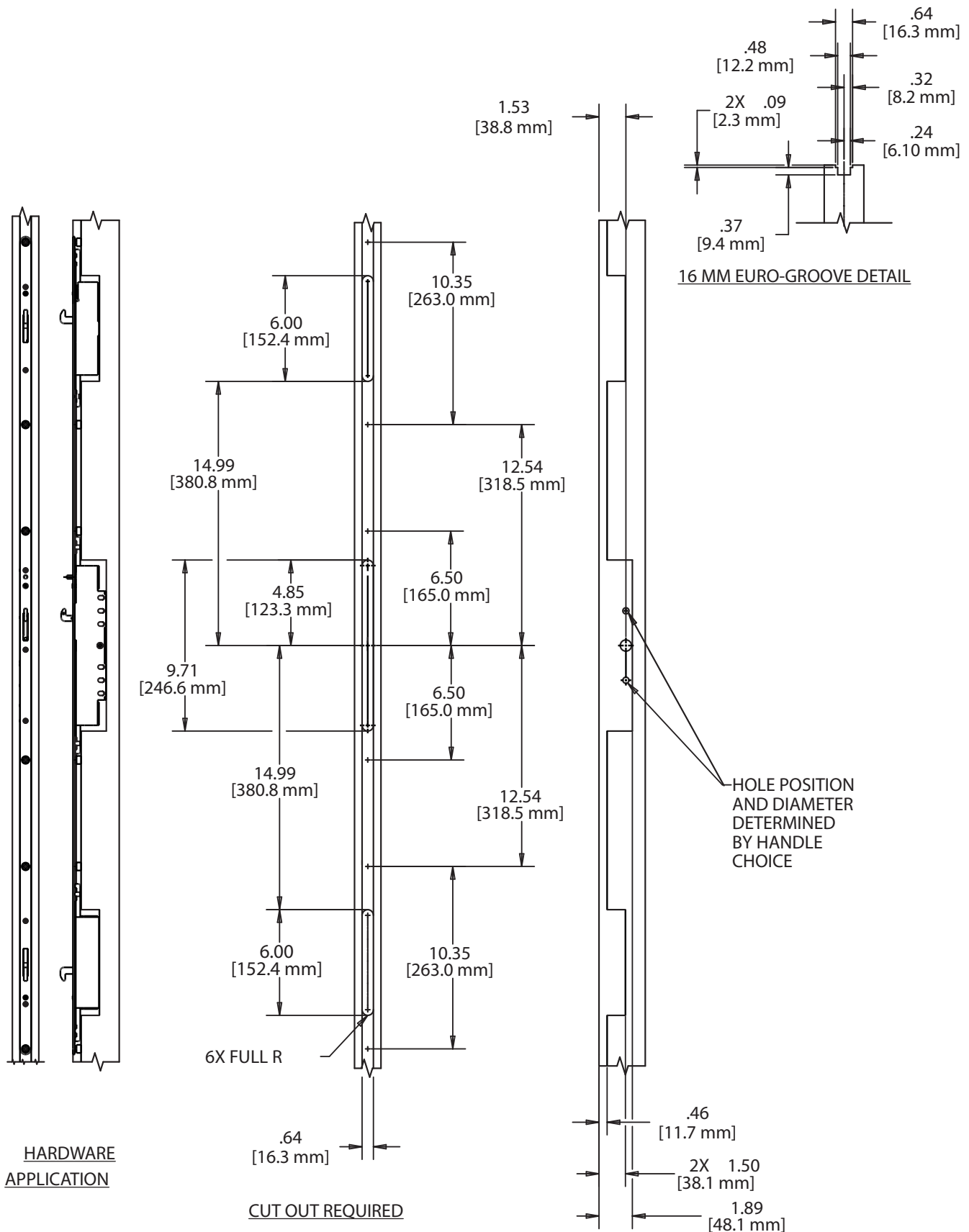
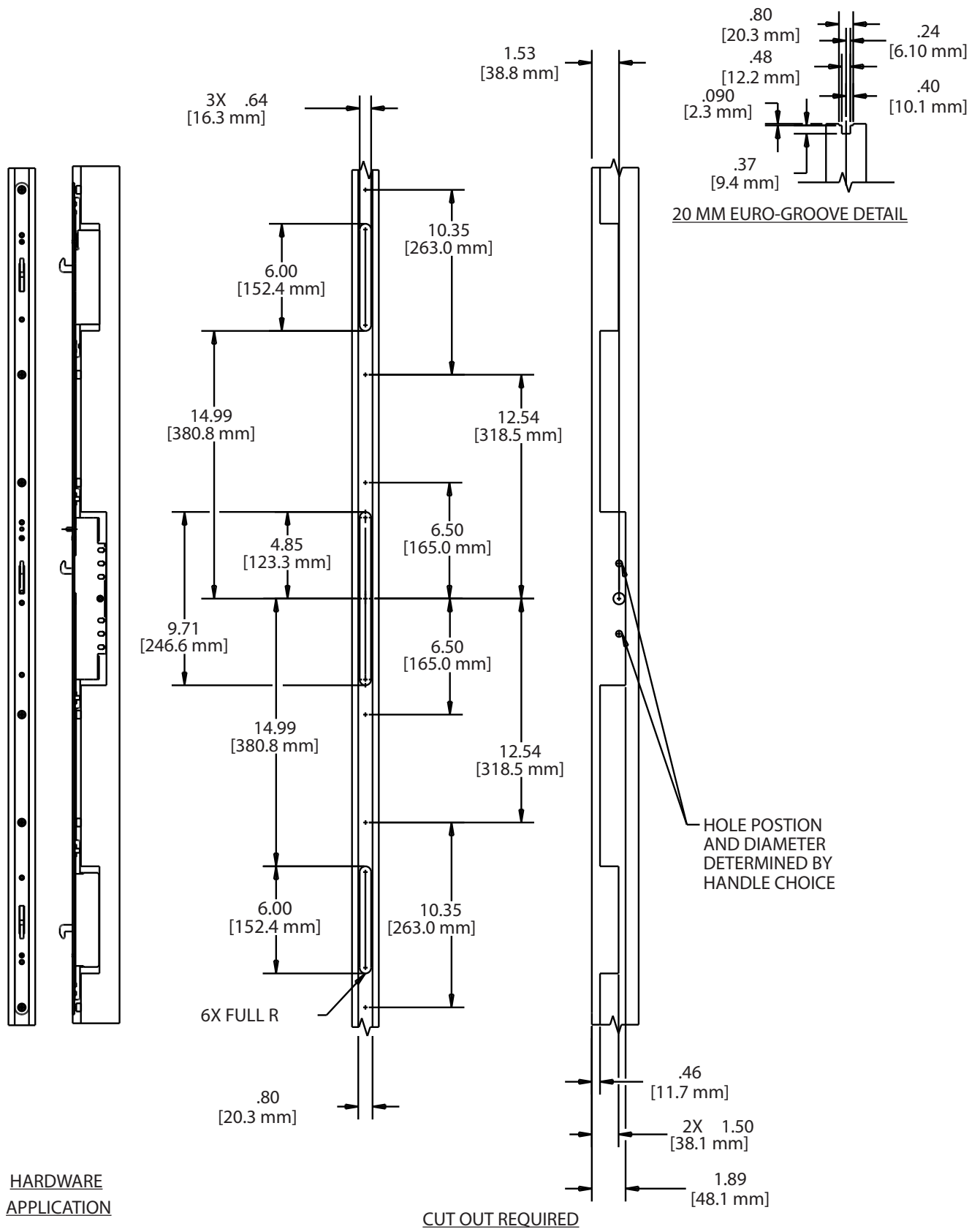
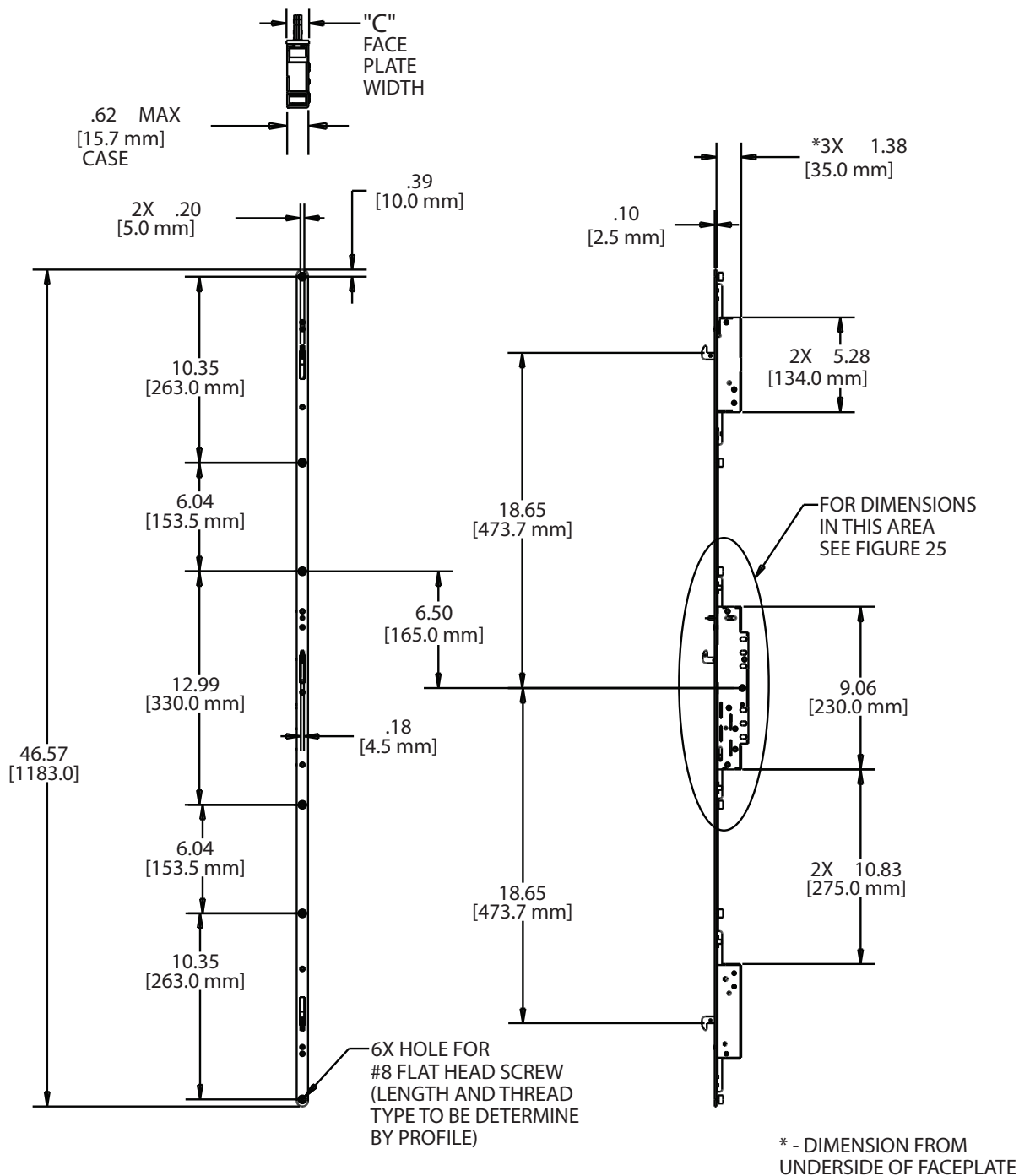


FIG. 23 THREE POINT MORTISE LOCK, 20mm EURO-GROOVE APPLICATION DEEP BACKSET



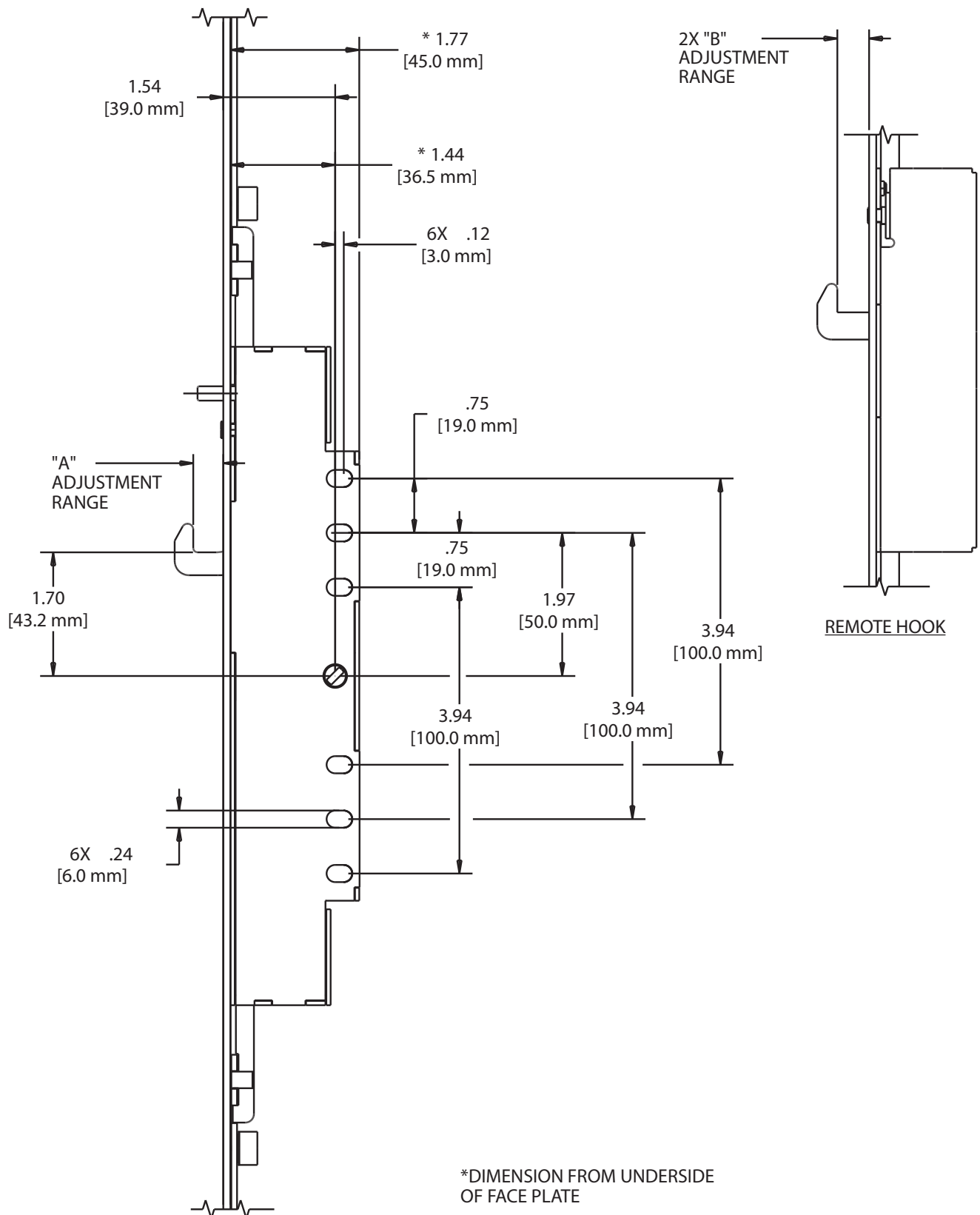
NEXUS THREE-POINT MORTISE LOCK

FIG. 24 THREE POINT MORTISE LOCK, EURO-GROOVE - DEEP BACKSET (16mm AND 20mm)



PART NUMBER	HOOK LENGTH	"A" ADJUSTMENT RANGE SEE FIG. 25	"B" ADJUSTMENT RANGE SEE FIG. 25	"C" FACE PLATE
13777	STANDARD	.15-.28(3.9-7.1 mm)	.15-.32(3.9-8.1 mm)	.63(16 mm)
13778	EXTENDED	.27-.40(6.9-10.1 mm)	.27-.44(6.9-11.1 mm)	.63(16 mm)
13779	STANDARD	.15-.28(3.9-7.1 mm)	.15-.32(3.9-8.1 mm)	.79(20 mm)
13780	EXTENDED	.27-.40(6.9-10.1 mm)	.27-.44(6.9-11.1 mm)	.79(20 mm)

FIG. 25 THREE POINT MORTISE LOCK, EURO GROOVE DETAIL DEEP BACKSET



NEXUS THREE-POINT MORTISE LOCK

FIG. 26 THREE POINT MORTISE LOCK, 33338 KEEPER

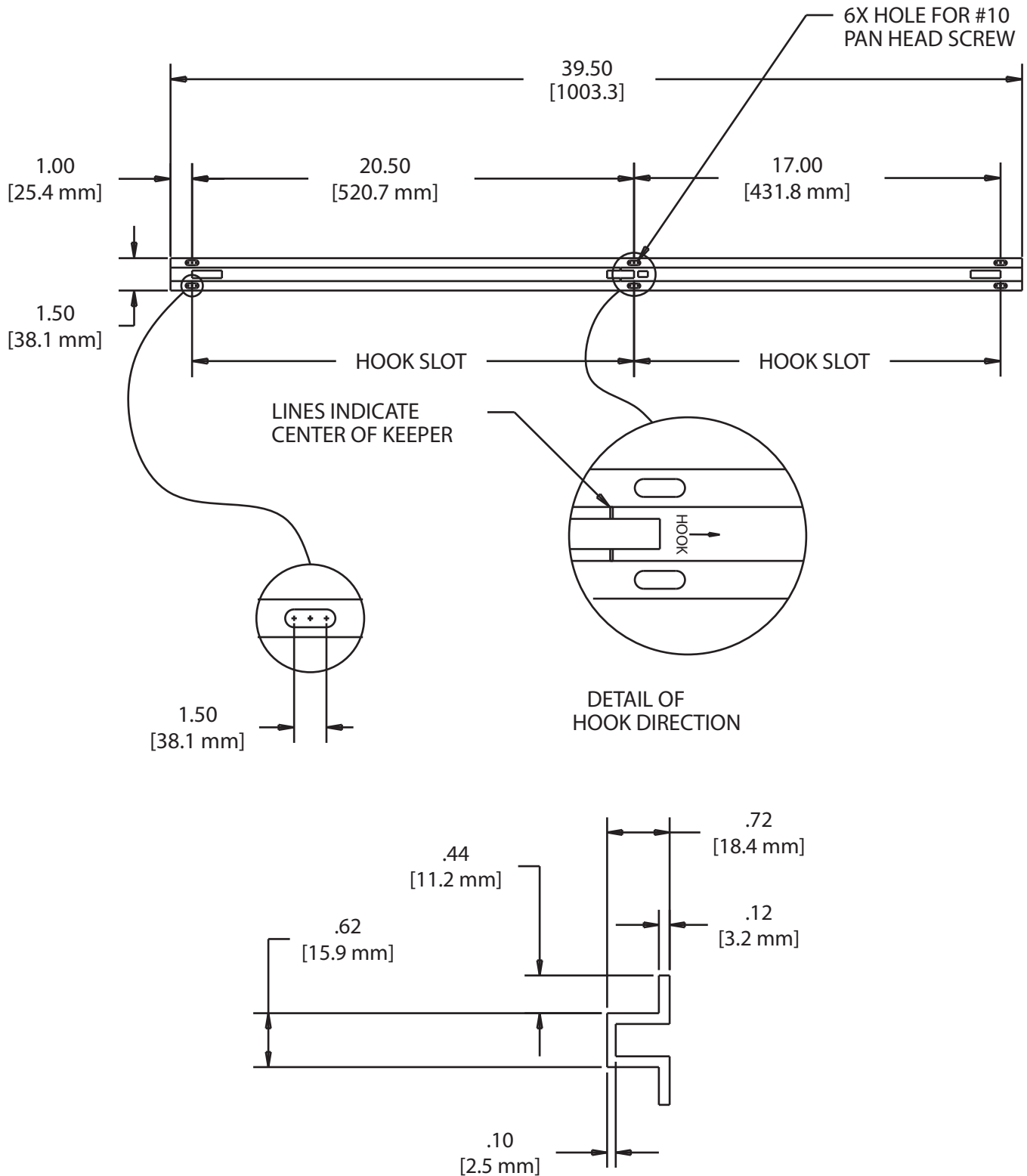
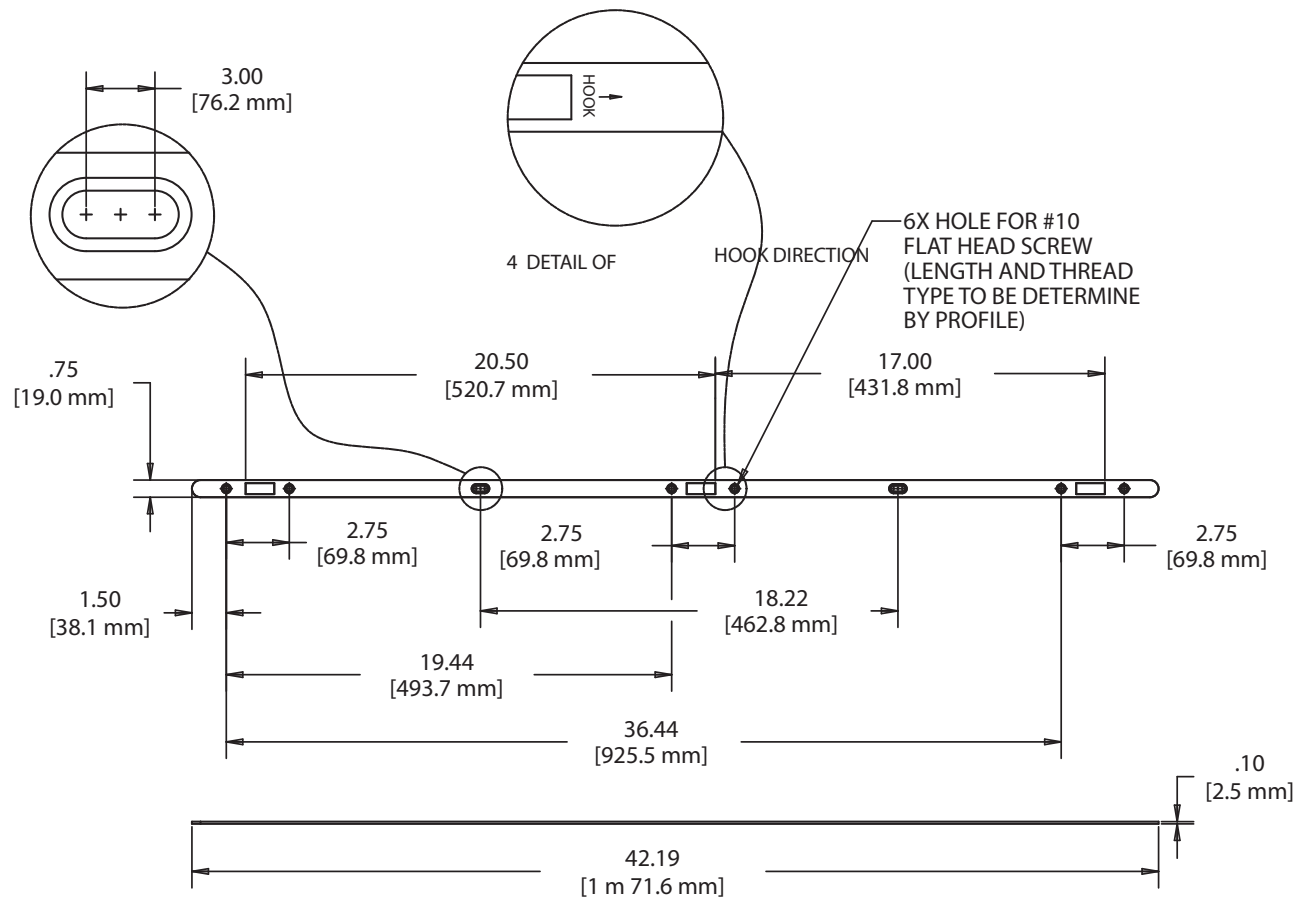
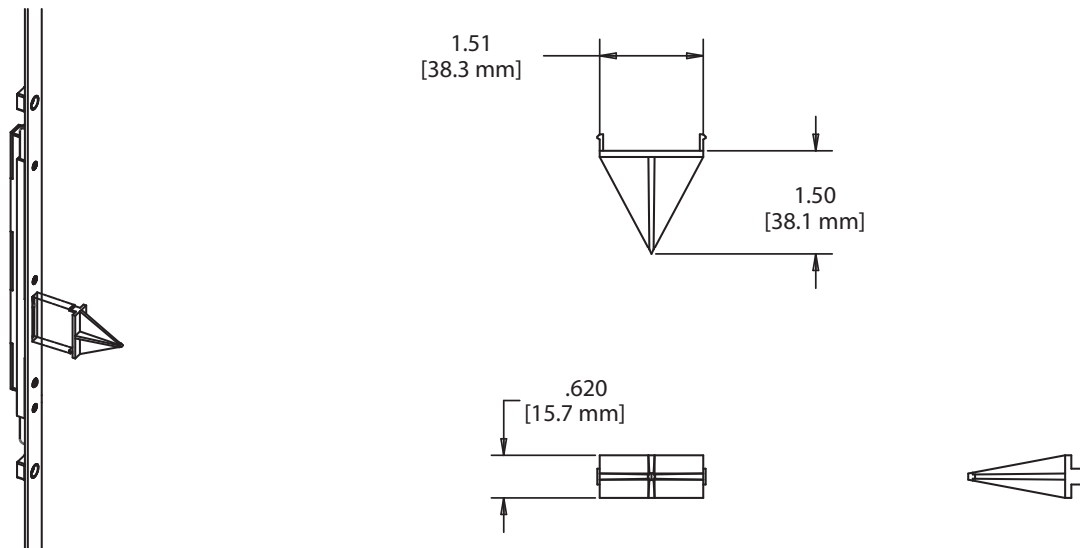


FIG. 27 THREE POINT MORTISE LOCK, 33337 KEEPER



**FIG. 28 THREE POINT MORTISE LOCK
33277 KEEPER LOCATOR**



**NEXUS
THREE-POINT
MORTISE LOCK**