



The Ascent Lock by Truth Hardware is our ultra flexible variation on the classic European style Euro Groove Locking System. With multi-point systems available for both hinged window and door systems, the Ascent Lock allows for “plug n play” adaptability for a wide range of applications without sparing on the quality and reliability that you expect from Truth Hardware.

Designed for aluminum hinged window and doors, this multi-point locking system is designed to fit most common European style profile grooves. With various keeper designs to fit a wide range of frame styles and handles which are interchangeable and reconfigurable for maximum “in-house” flexibility, the Ascent System has been designed to help manufacturers produce a reliable and attractive window and door system

### EASY INSTALLATION

The Ascent System consists of pre-assembled components which, compared to competitive systems, greatly reduces the effort needed to install this hardware. Simple “slide-in” design ensures quick production rates and virtually mistake proof installation. Combine this with standardized fasteners which helps keep the number of installation tools to a minimum and your manufacturing efficiencies have been greatly enhanced.

### ADJUSTABILITY

Truth’s Ascent System offers adjustability of both the lock point and the keeper producing maximum mounting flexibility and allows each installation to be optimized for peak performance and ease of operation. Lock point load capacity is +300 lbs per roller.

### STYLISH

Ascent handles are available in both “classic” and “radius” styling across the window and door offering to help complement the décor of their surroundings. Both handle designs are available in single- or double-throw locking mechanisms and a range of 4 standard finishes which coordinate with existing Truth Hardware offerings.

### WINDOW SYSTEMS

Our window lock system provides a wide range of available drive components which enable almost any locking application to be accommodated. From corner drives which allow locking of up to 3 sides on the same sash, to shoot bolts for integrated terrace door applications, our system provides a solution. Rollers on all active lock points help reduce operating force to support ADA requirements.

### DOOR SYSTEMS

We also have door handles and escutcheons style matched to the window handles to provide coordinated styling from window to door for combination applications. The door lock drive also utilizes the same lock drive components for easy integration in to your profile systems.

### PRODUCT APPLICATION ASSISTANCE:

If you are designing a new window or door profile, or having difficulty selecting hardware, please contact Truth Hardware. Our highly trained Product Specialists can assist you with the selection of the appropriate hardware to meet your performance requirements, as well as providing personalized application drawings.

### MATERIALS:

Aluminum compatible design ensures maximum corrosion resistance. Coatings allow no direct contact with ferrous materials.

**Locking Handles:** Cast zinc or aluminum for high quality feel and reliability.

**Lock Components:** Cast zinc for strength and durability.



**“Classic”**  
#14051  
#14056



**“Radius”**  
#14054  
#14058



### WARRANTY:

Protected under the terms of the Truth Warranty for Window & Door Manufacturers & Authorized Distributors. Refer to Truth's Terms & Conditions for further details.

### FINISH:

Handles are available in a range of 4 standard decorative powder coated finishes. All functional components are finished in satin "anodized" aluminum plating for maximum durability and corrosion resistance.

### ORDERING INFORMATION:

Because of the variety of window and door profiles on the market, Truth recommends that you contact Truth Hardware's Product Specialists to help you identify the components that will best meet your requirements and to provide application assistance when requested. To assist us in helping you identify the products you need, please be prepared to provide Truth with the type and style of profile that you are mounting your hardware to.

### RECOMMENDED SCREWS:

Types of screws required determined by material of profile used. See Tech Note #11. Refer to drawings for complete information on screw type and quantity needed (sold separately).

### TRUTH TIPS:

1. Truth recommends that when designing a hinged window the sash width should be limited to no greater than 66% of the sash height. A sash width that exceeds 66% could develop sash sag over the life of the window. Refer to Truth Tech Note # 3 for more information dealing with sash sag prevention.

2. When selecting mounting screws for Truth hardware, coating compatibility is one of the most important criteria. For best corrosion resistance the coating on the screws should be the same as the coating on the hardware. For more information see Truth Tech Note #11.

3. On some window designs, binding can be experienced on the hinge side of the window between the outermost edge of the sash and the

jamb. This problem occurs when switching from standard to and "egress" hinge. If a window system is designed to work with an "egress" hinge, the window system will work with all other Truth Concealed Casement Hinges. When binding is encountered, three solutions are available; a) move hinge location toward outside of the sash, b) increase the clearance between the sash and jamb, and c) decrease the thickness of the sash.

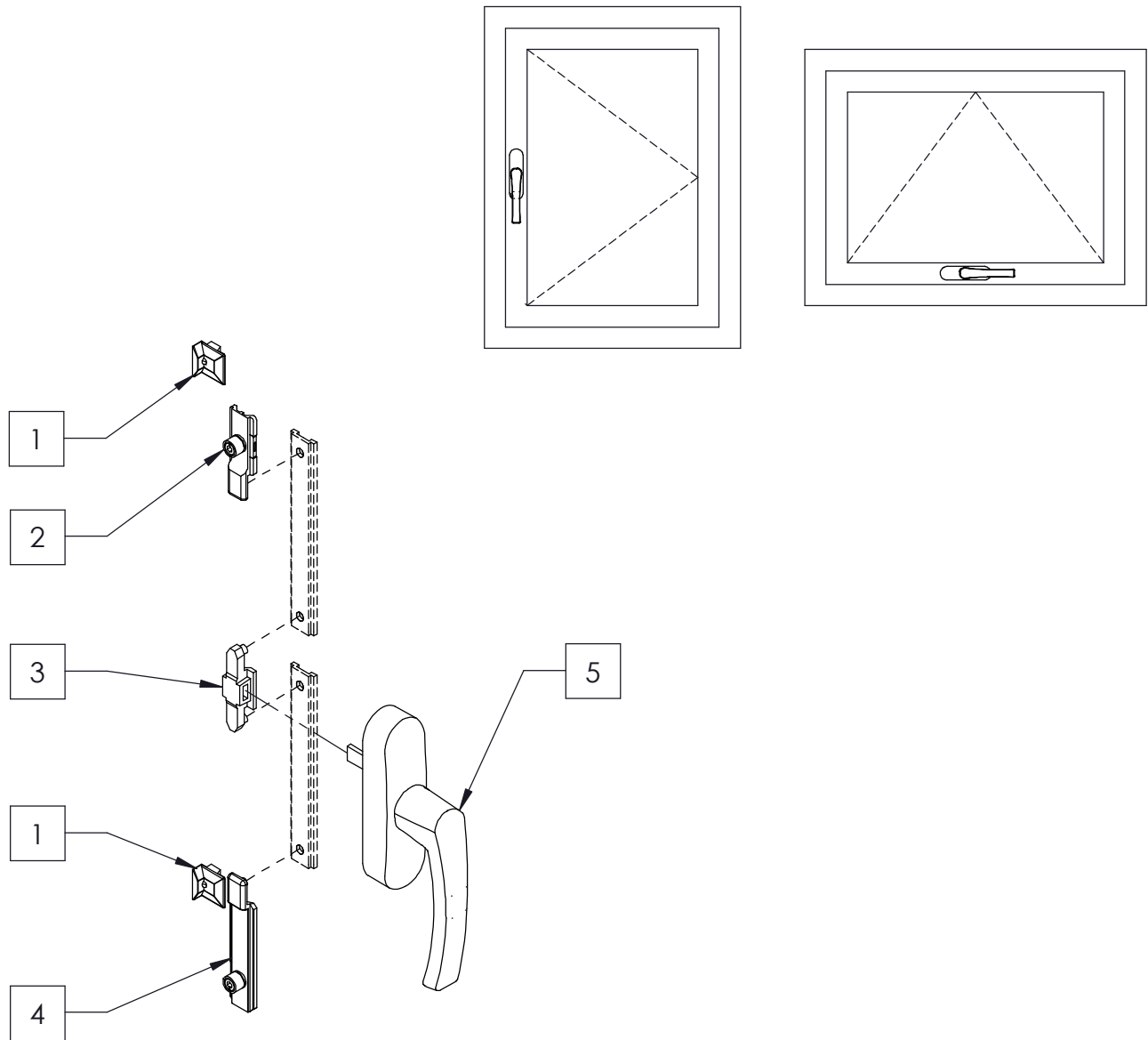
4. Truth's Euro style door lock system utilizes a commonly available European style lock cylinder, available from Truth hardware.

### INCLUDE TRUTH SPECS ON YOUR NEXT WINDOW OR DOOR PROJECT

European locking system integrated into window profiles to provide maximum performance for casement and awning window applications. All components are high pressure die castings protected with durable powder coat finishes.

Locking points offer adjustability of both lock roller and independent keepers. Ascent locking system as provided by Truth Hardware.

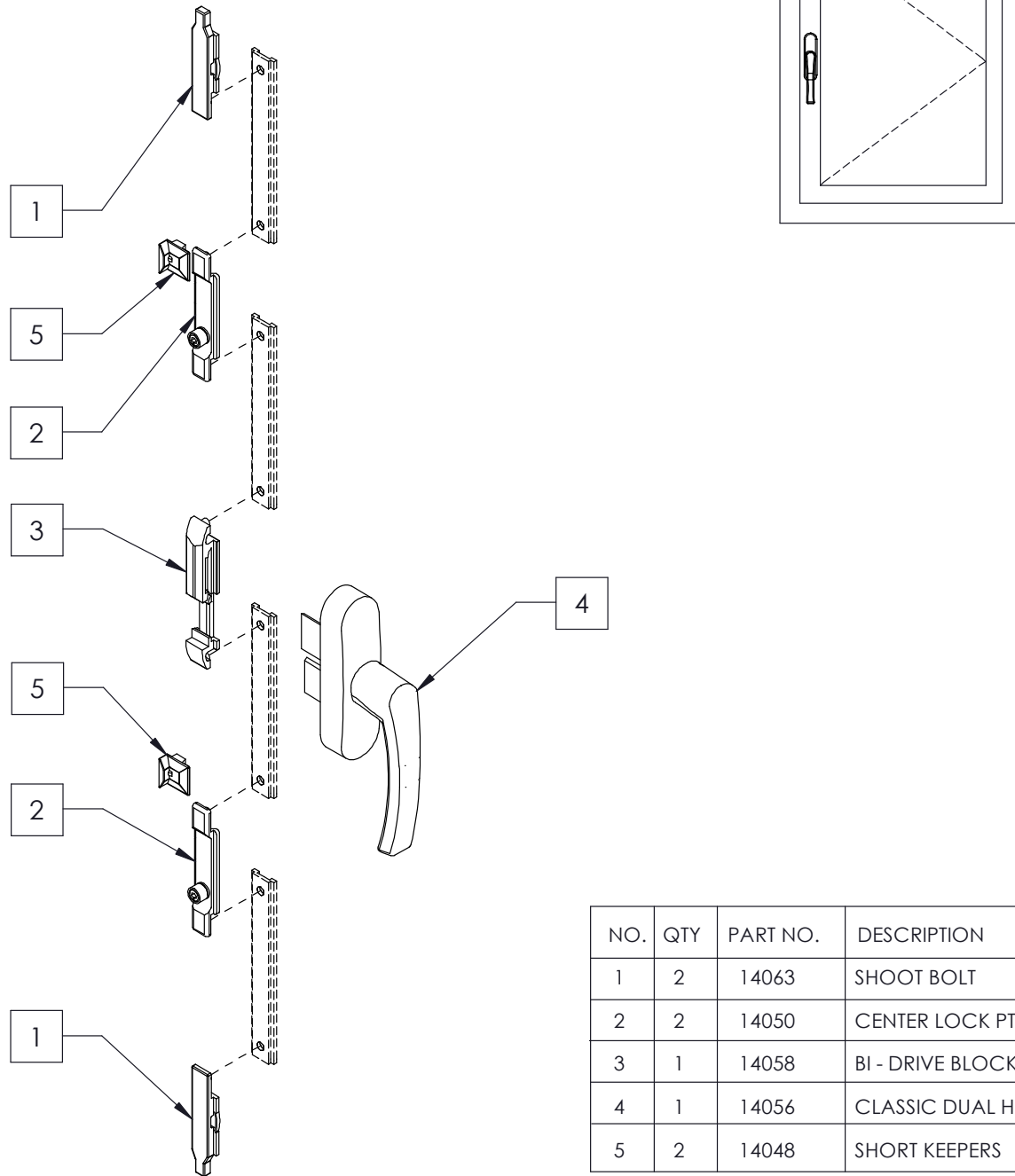
FIG. 1 STANDARD 2 POINT LOCK



| NO. | QTY | PART NO. | DESCRIPTION        |
|-----|-----|----------|--------------------|
| 1   | 2   | 14048    | SHORT KEEPER       |
| 2   | 1   | 14061    | SHORT END LOCK PT  |
| 3   | 1   | 14049    | DRIVE BLOCK        |
| 4   | 1   | 14062    | LONG END LOCK PT   |
| 5   | 1   | 14051    | CLASSIC STD HANDLE |

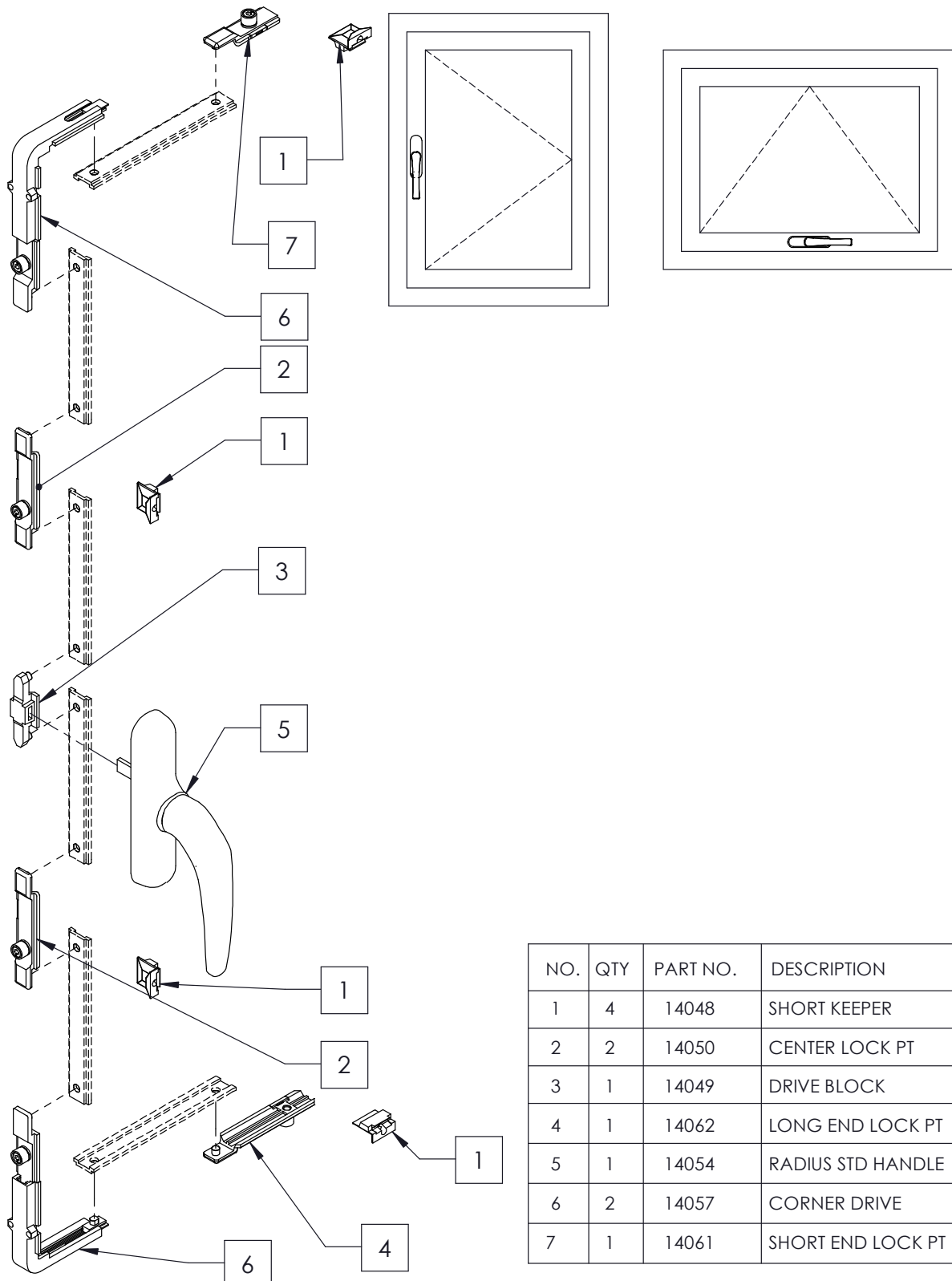
## ASCENT EURO GROOVE LOCKING SYSTEM

FIG. 2 2 POINT LOCK WITH SHOOT BOLTS (DUAL DRIVE HANDLE)



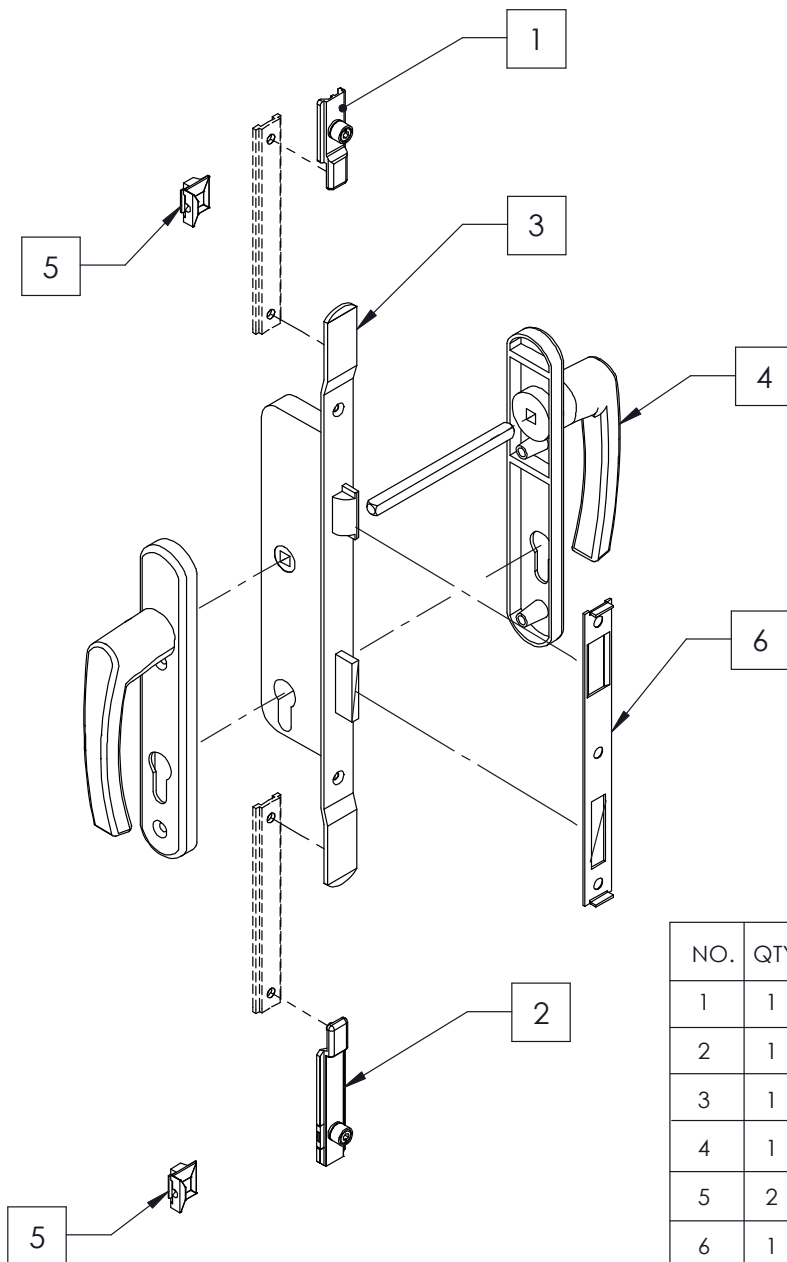
| NO. | QTY | PART NO. | DESCRIPTION         |
|-----|-----|----------|---------------------|
| 1   | 2   | 14063    | SHOOT BOLT          |
| 2   | 2   | 14050    | CENTER LOCK PT      |
| 3   | 1   | 14058    | BI - DRIVE BLOCK    |
| 4   | 1   | 14056    | CLASSIC DUAL HANDLE |
| 5   | 2   | 14048    | SHORT KEEPERS       |

FIG. 3 6 POINT LOCKING ON 3 SIDES OF VENT



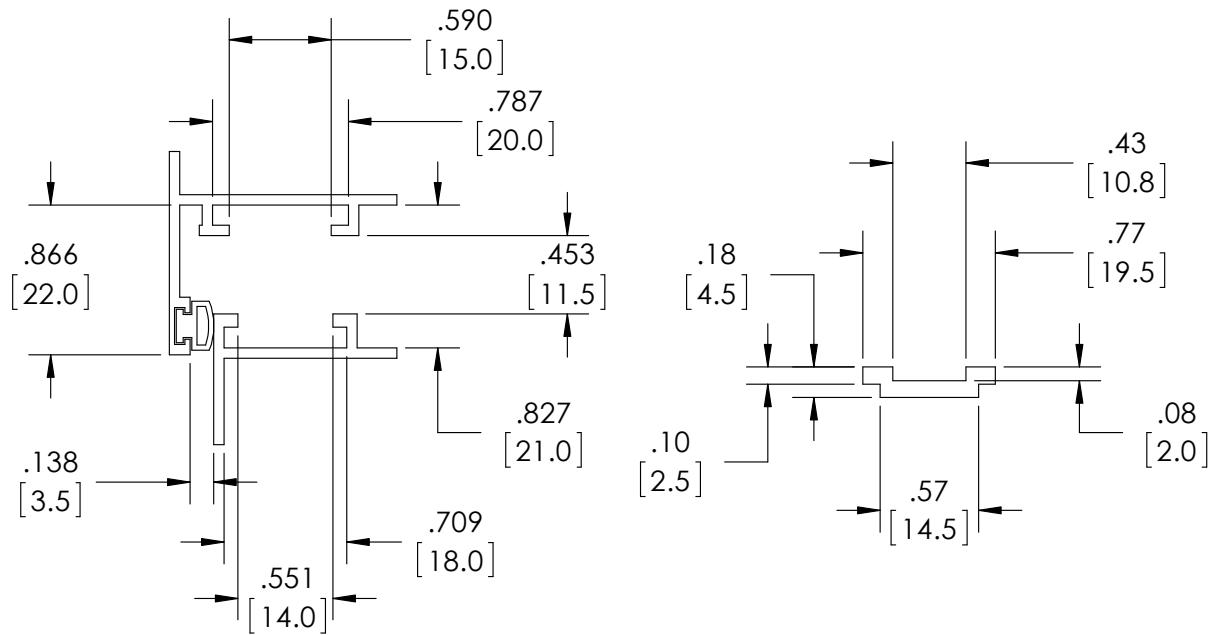
# ASCENT EURO GROOVE LOCKING SYSTEM

FIG. 4 TERRACE DOOR SYSTEM WITH 2 POINT LOCKING

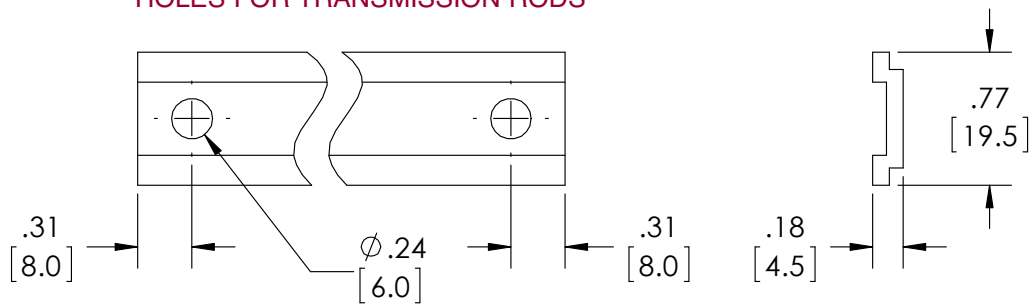


| NO. | QTY | PART NO. | DESCRIPTION       |
|-----|-----|----------|-------------------|
| 1   | 1   | 14061    | SHORT END LOCK PT |
| 2   | 1   | 14062    | LONG END LOCK PT  |
| 3   | 1   | 14059    | DOOR LOCK BOX     |
| 4   | 1   | 14053    | CLASSIC DOOR SET  |
| 5   | 2   | 14048    | SHORT KEEPER      |
| 6   | 1   | 14060    | DOOR STRIKE       |

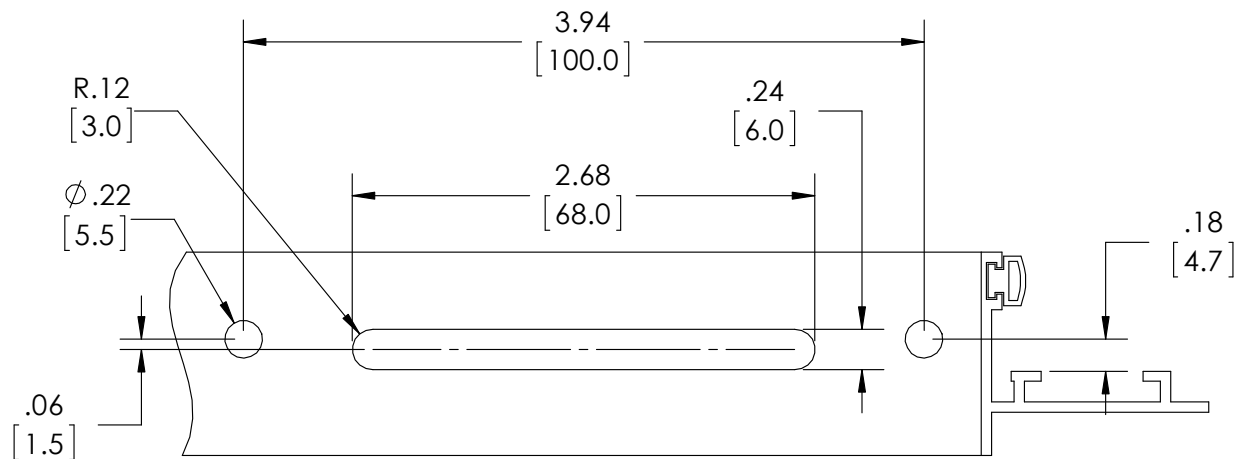
FIG. 5 SPECIFICATION OF THE SLOT SECTION FOR MOVEABLE FITTINGS



#### HOLES FOR TRANSMISSION RODS



#### DIMENSION FOR THE HANDLE INSTALLATION



# ASCENT EURO GROOVE LOCKING SYSTEM

FIG. 6 OUTSWING 2 POINT LOCK

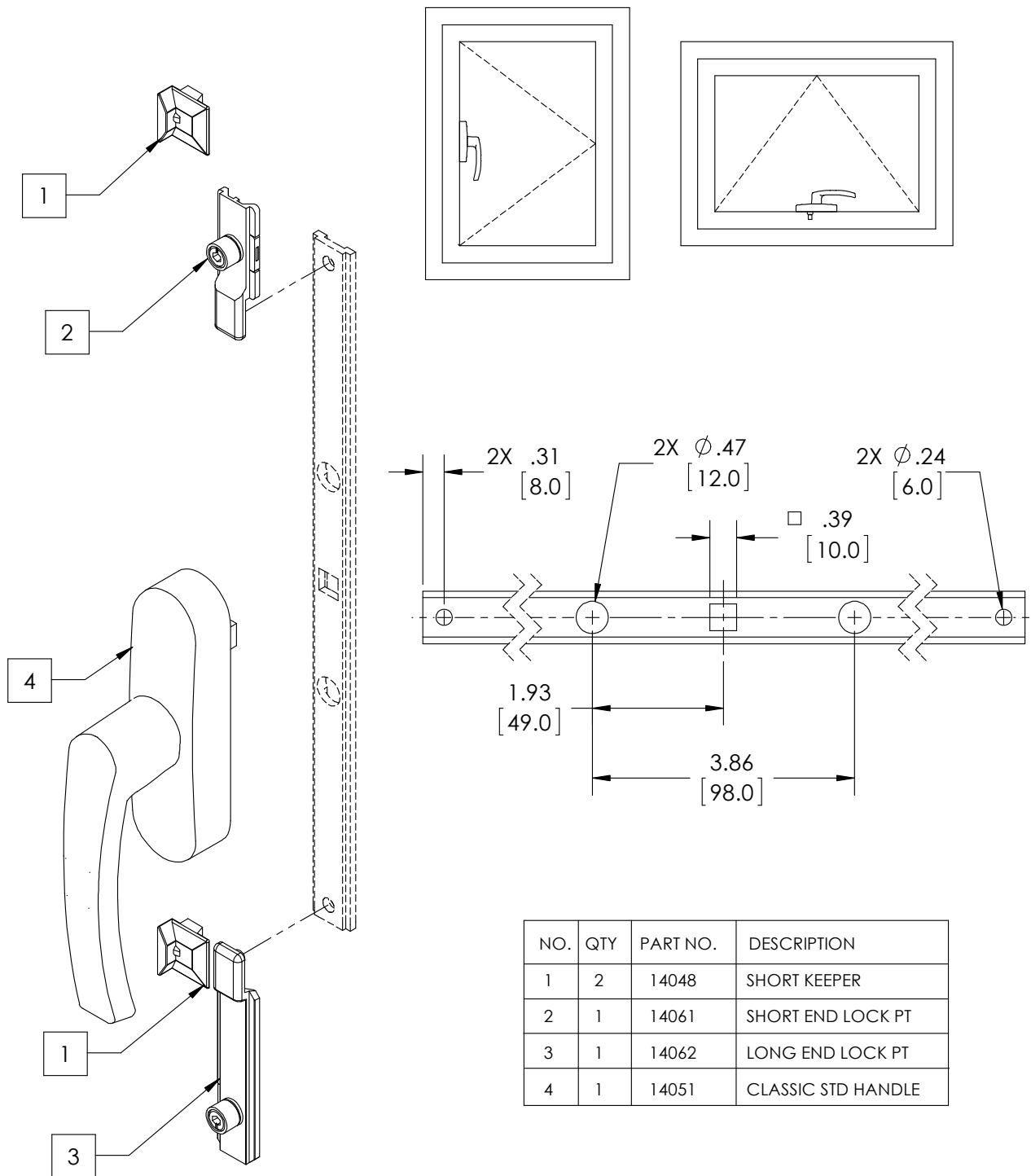
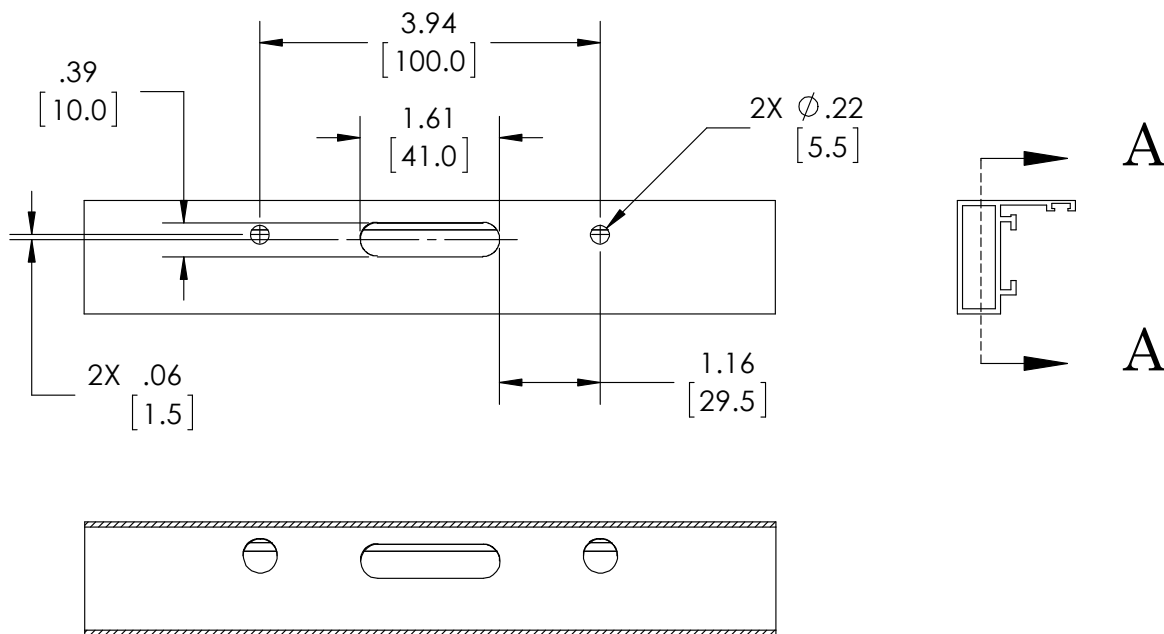
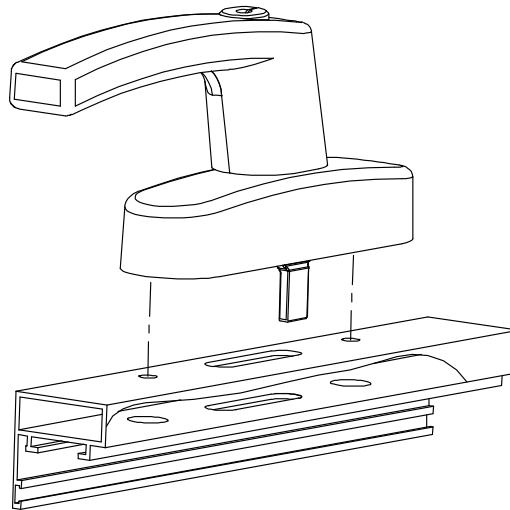




FIG. 7 OUT-SWING MOUNTING CUTOUT



SECTION A-A

FIG. 8 DRIVE BLOCK 14049

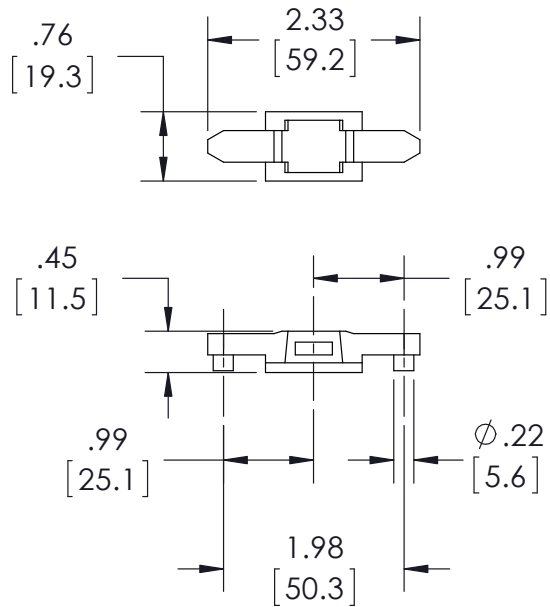


FIG. 11 DUAL-DRIVE BLOCK 14058

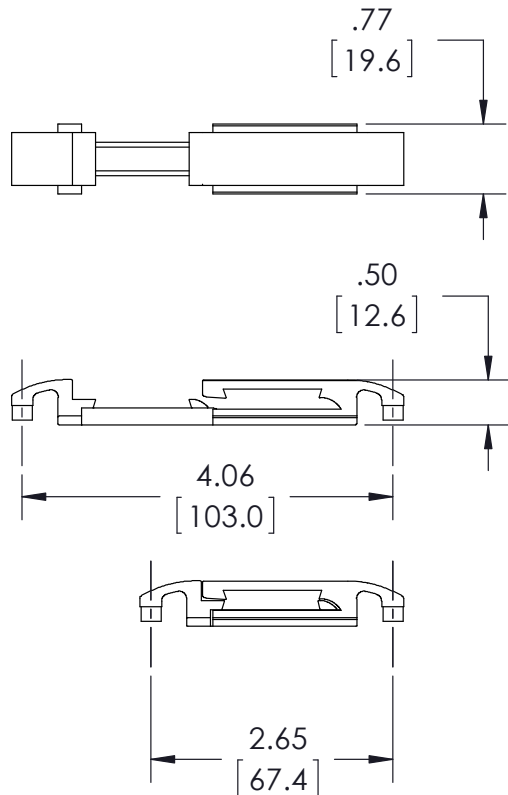


FIG. 9 CENTER LOCK POINT 14050

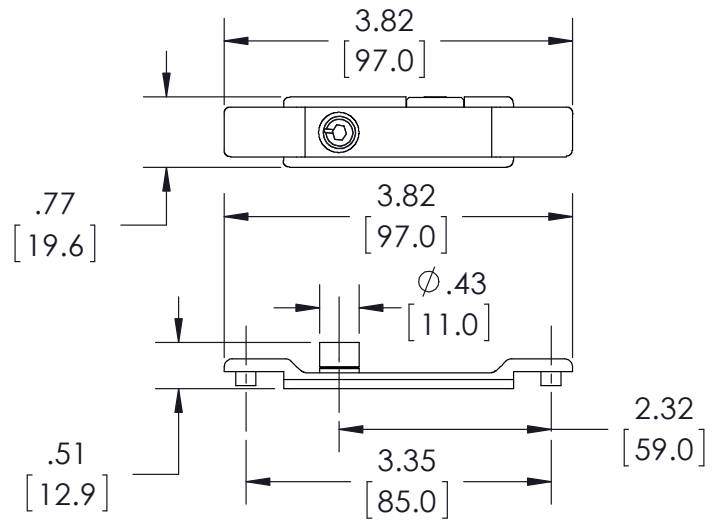


FIG. 10 SHORT END LOCK POINT 14061

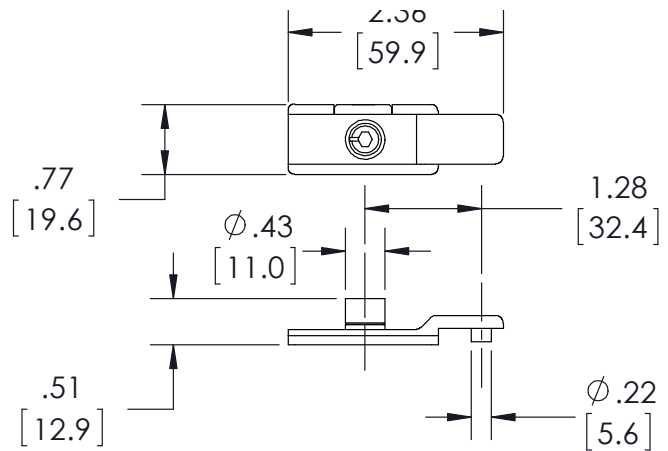
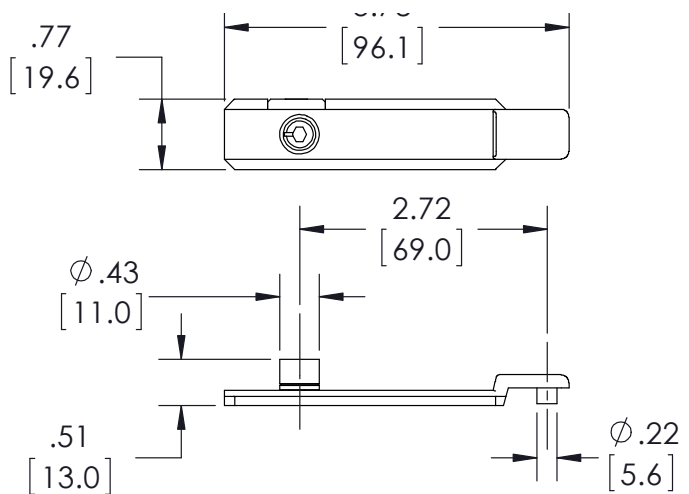
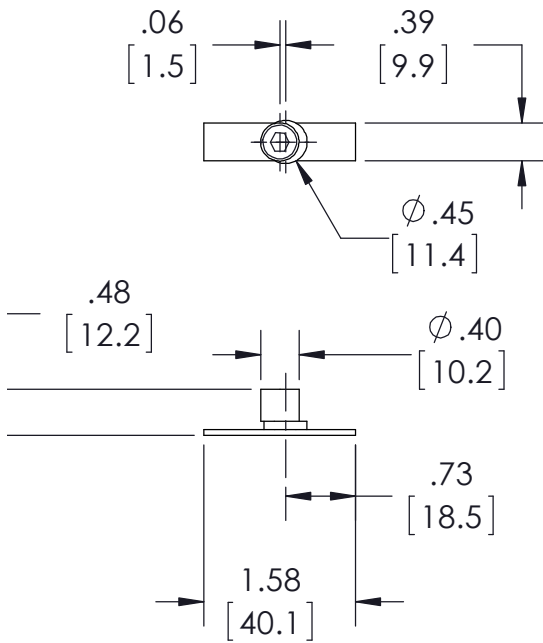


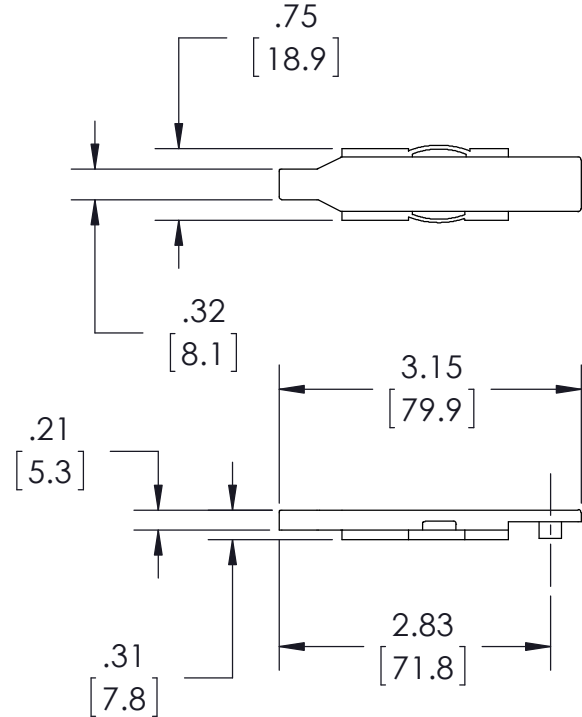
FIG. 12 LONG END LOCK POINT 14062



**FIG. 13 CURTAIN WALL POINT 14046**



**FIG. 14 SHOOT BOLT 14063**



**FIG. 15 CORNER DRIVE 14057**

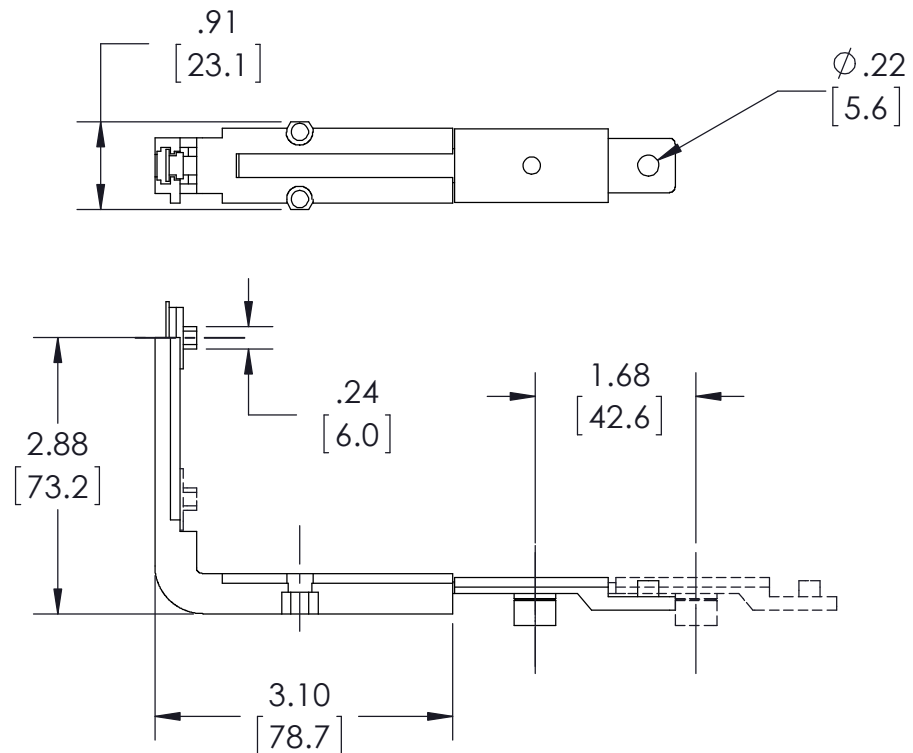


FIG. 16 CLASSIC STANDARD HANDLE 14051

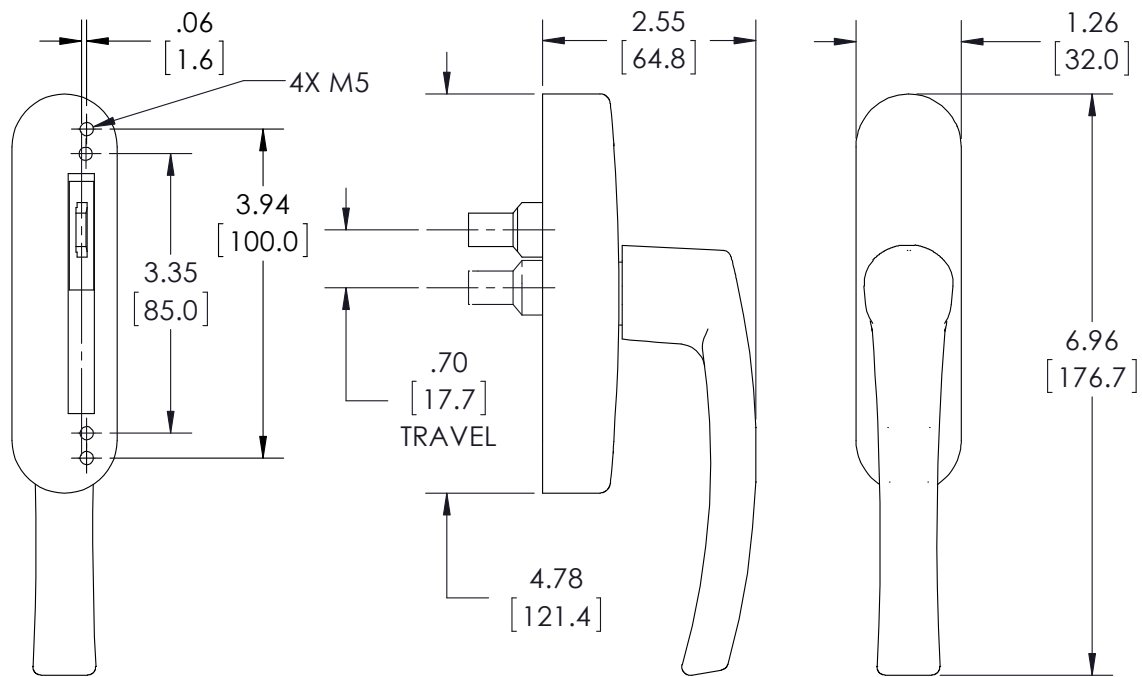


FIG. 17 CLASSIC DUAL HANDLE 14056

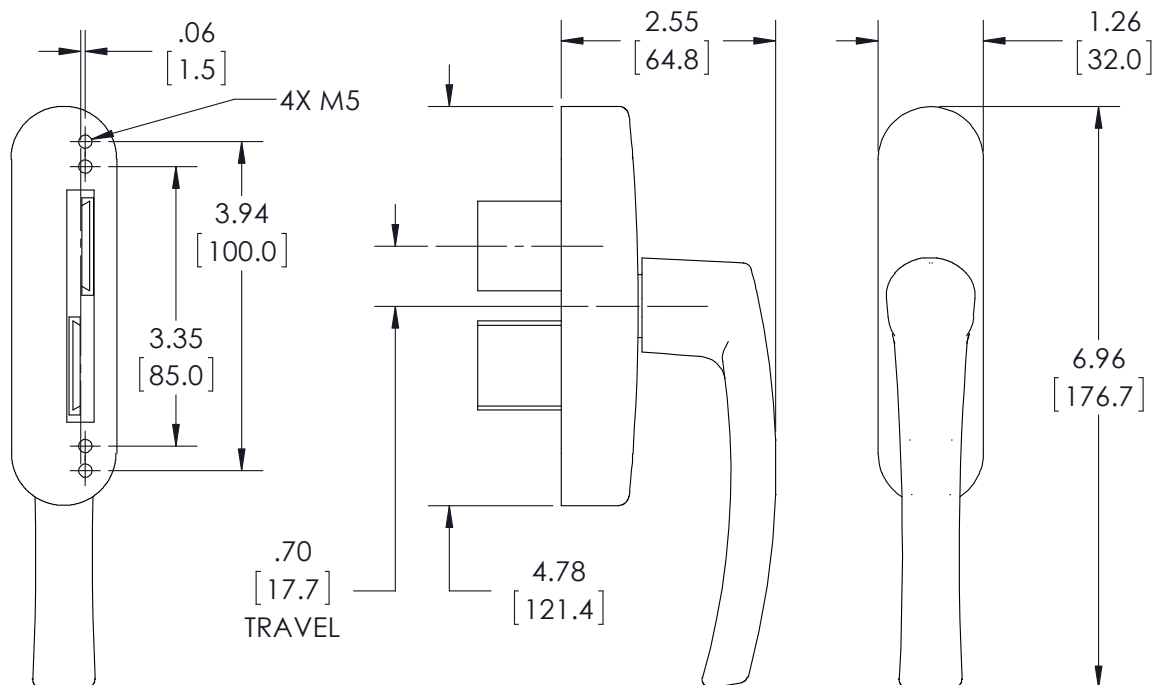


FIG. 18 RADIUS STANDARD HANDLE 14054

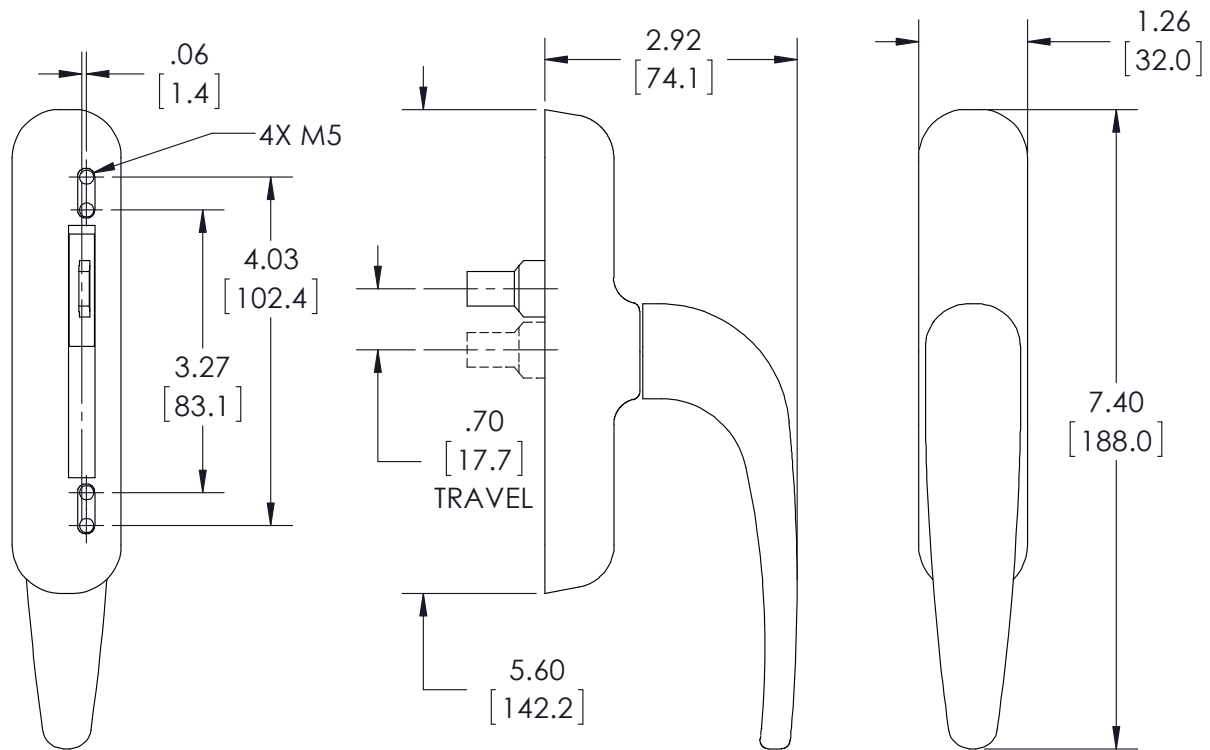


FIG. 19 RADIUS DUAL HANDLE 14148

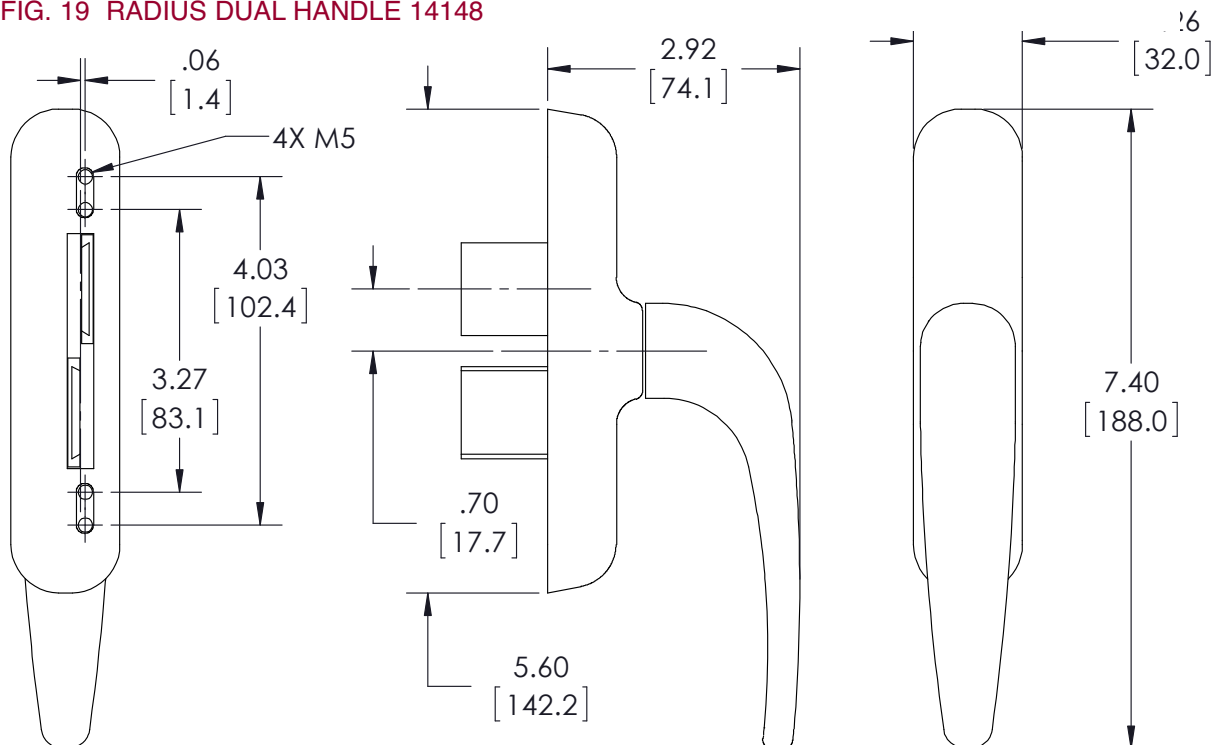


FIG. 20 LOCK BOX 14059

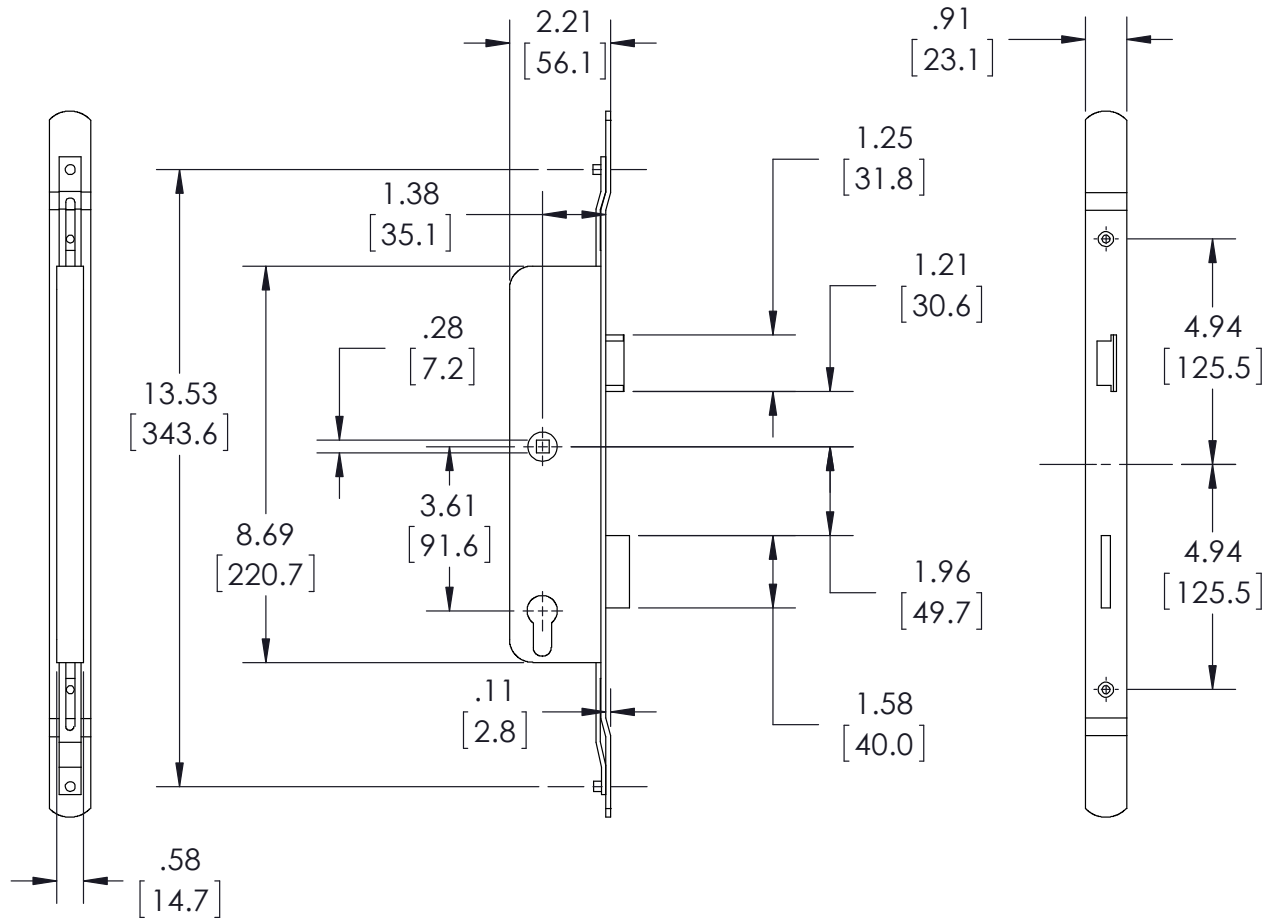


FIG. 21 DOOR STRIKE 14060

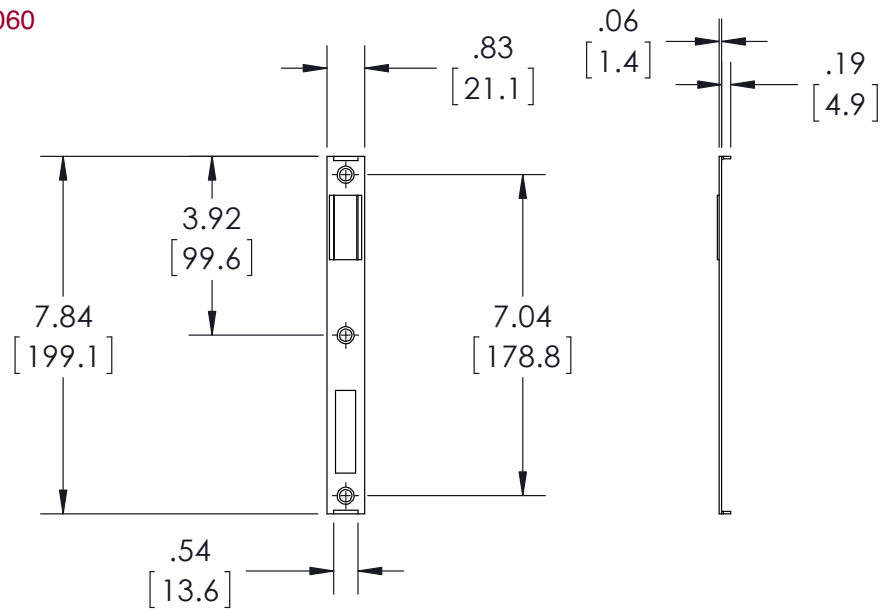


FIG. 22 CLASSIC DOOR HANDLE 14053

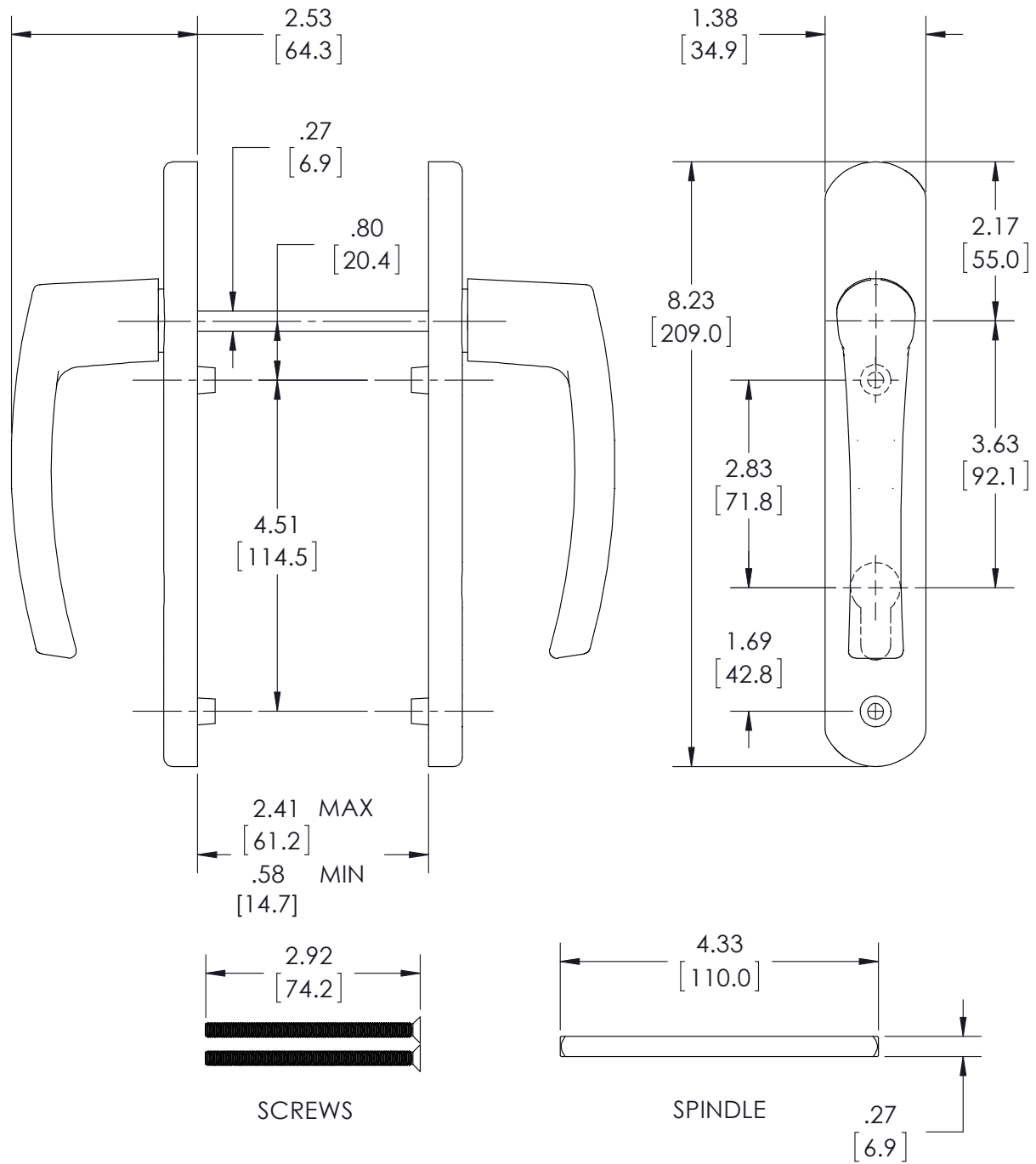


FIG. 23 #14228 CLASSIC STANDARD HANDLE WITH CYLINDER LOCK AND KEYS

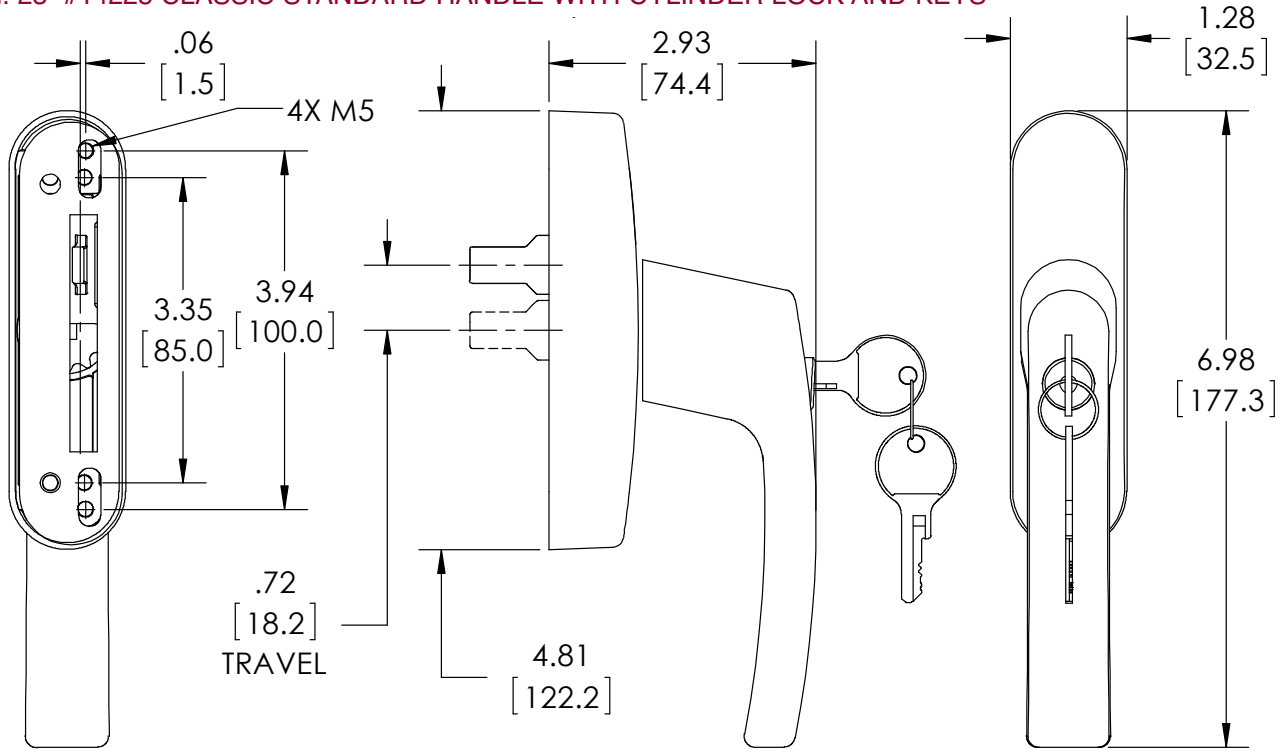


FIG. 24 #14230 CLASSIC DUAL HANDLE WITH CYLINDER LOCK AND KEYS

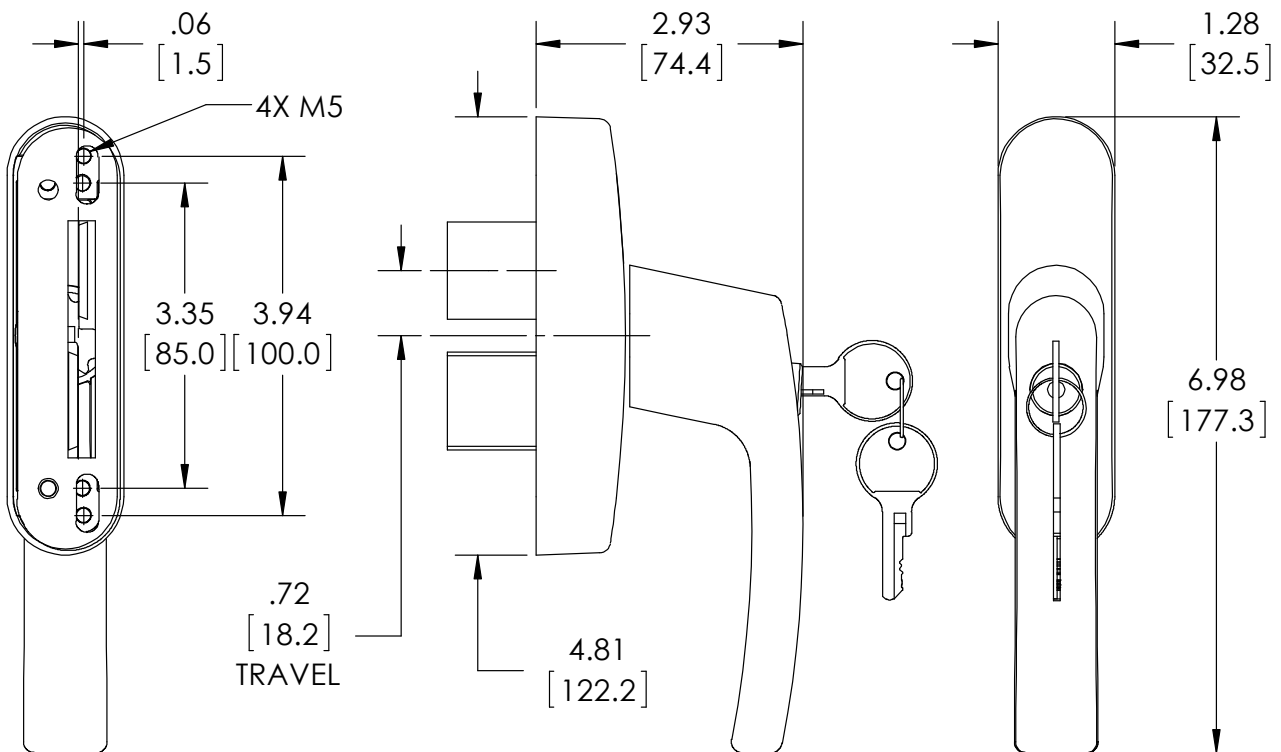




FIG. 25 14232 KEYS ONLY

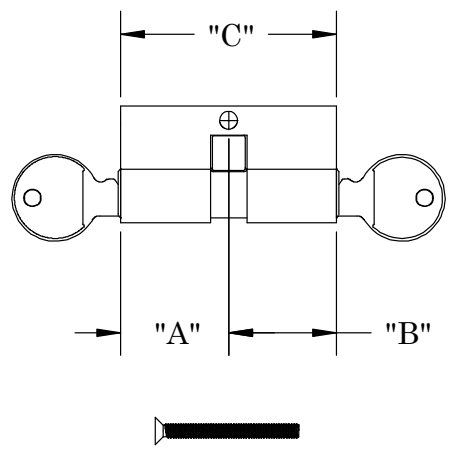
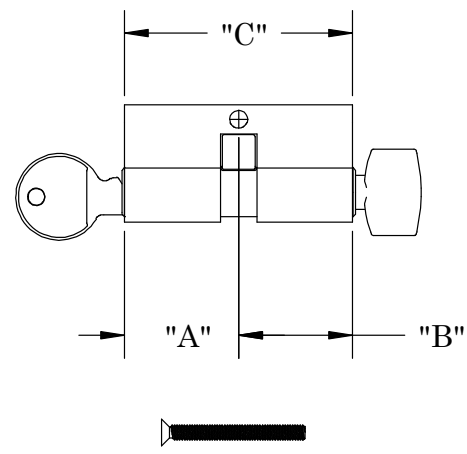


FIG. 26 14231 THUMB TURN AND KEY



| PART NO. | "A"         | "B"         | "C"         |
|----------|-------------|-------------|-------------|
| 14231    | 1.08 [27.5] | 1.08 [27.5] | 2.16 [54.9] |
| 14232    | 1.25 [31.8] | 1.25 [31.8] | 2.50 [63.5] |
|          |             |             |             |
|          |             |             |             |

FIG. 27 TALL KEEPER 14047

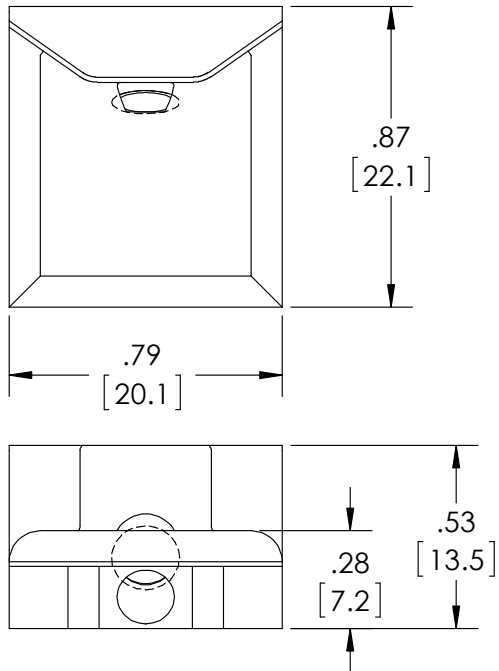


FIG. 28 SHORT KEEPER 14048

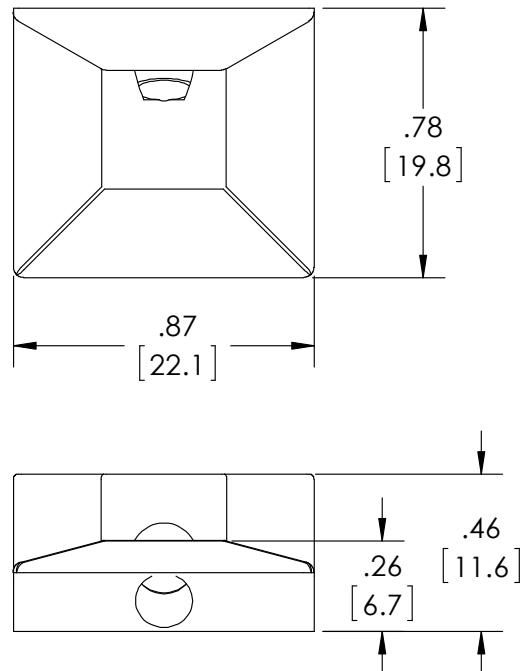
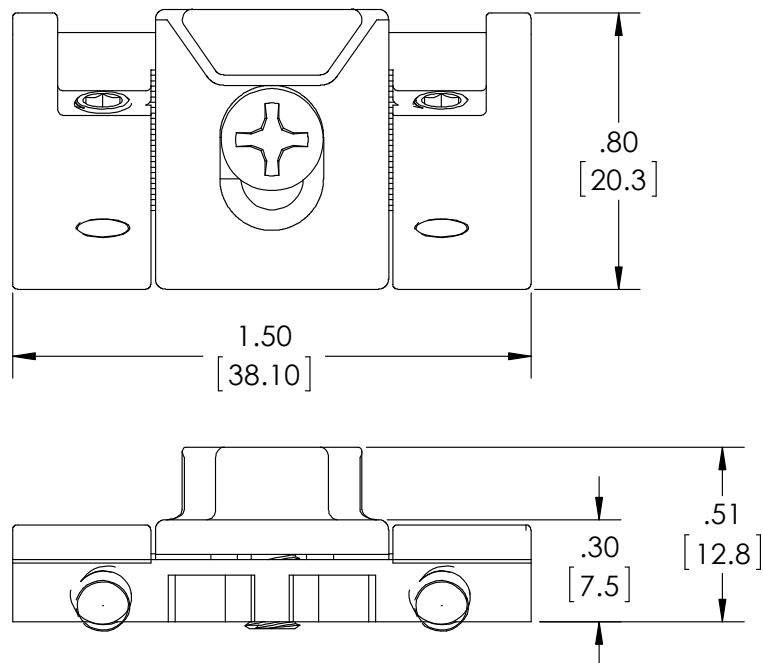


FIG. 29 ADJUSTABLE KEEPER 14064





## ASCENT EURO GROOVE LOCKING SYSTEM