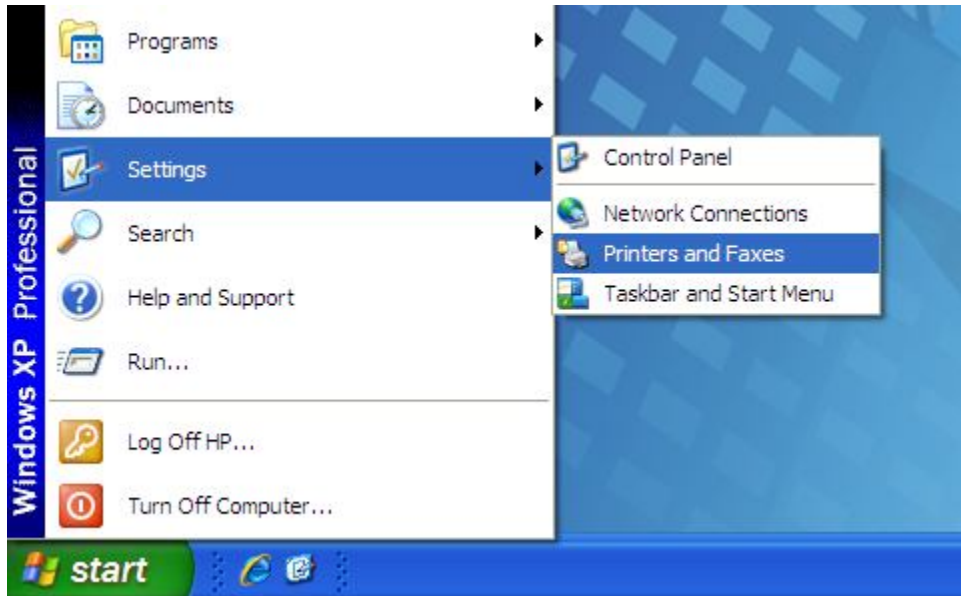
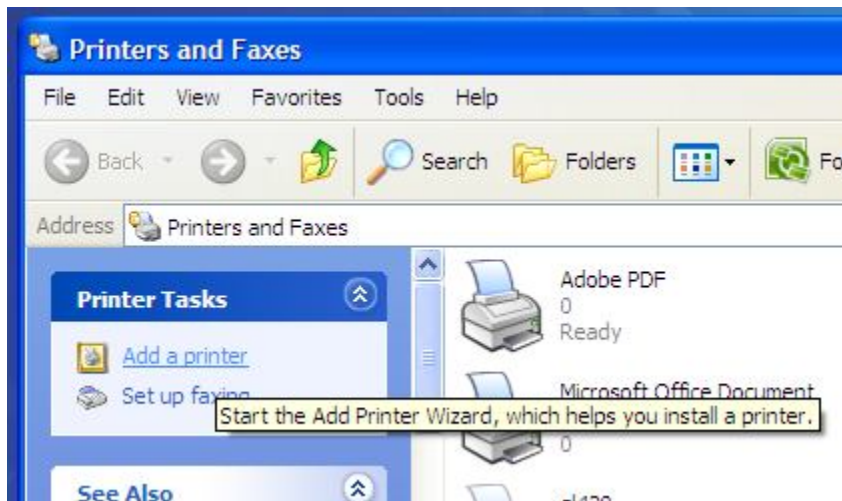


Creating a Zebra Printer connected to a PC for printing from Truth.com

To start first we need to create a generic text-only printer on the local PC. Goto Settings and Printers and Faxes to bring up the printers window.



Now lets create a printer by clicking on “Add a printer”

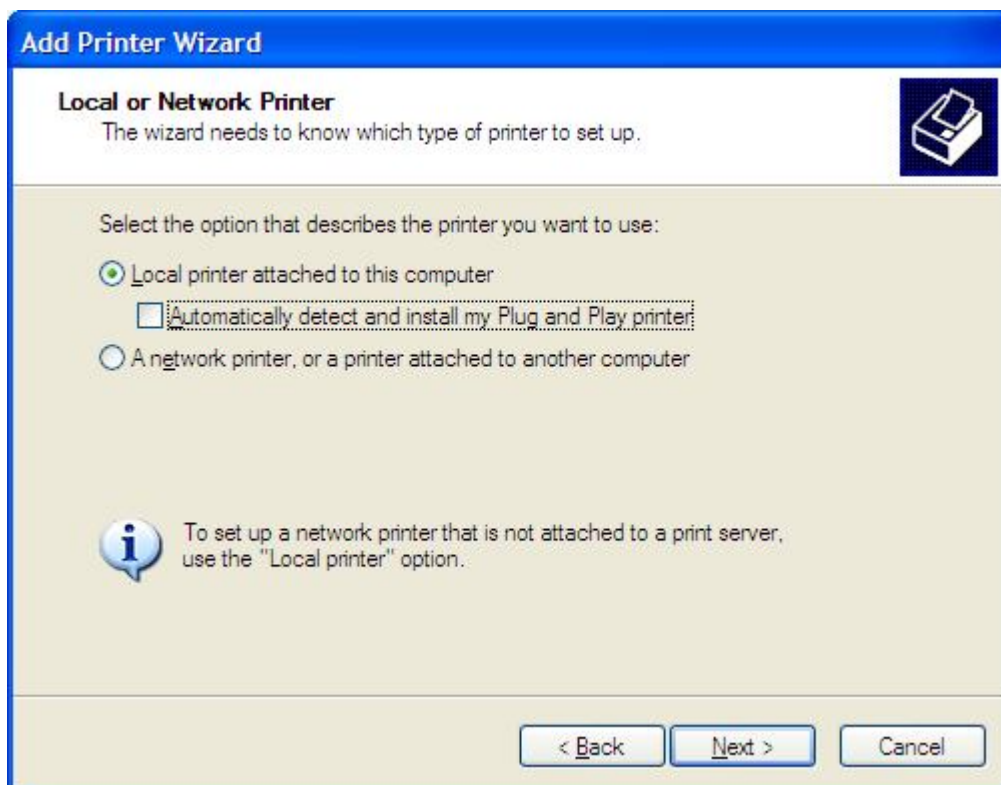


These next steps will guide you through creating the text-only printer on your PC.

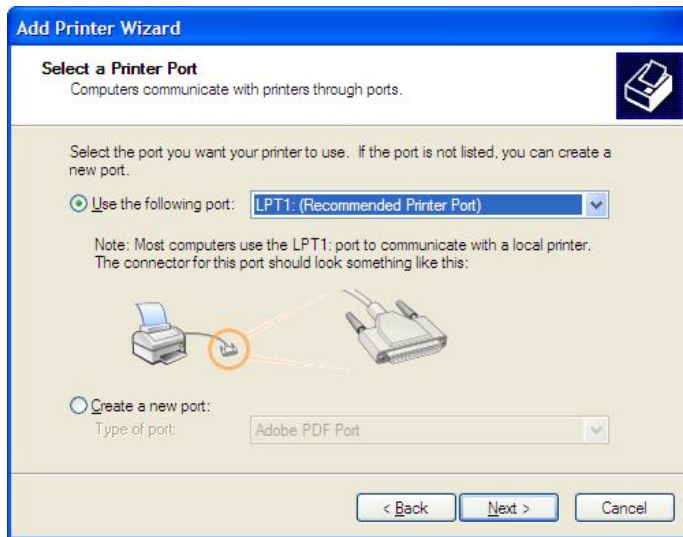
The Adding Printer Wizard is started after you clicked add printer from the previous page, go ahead and click “Next” to continue.



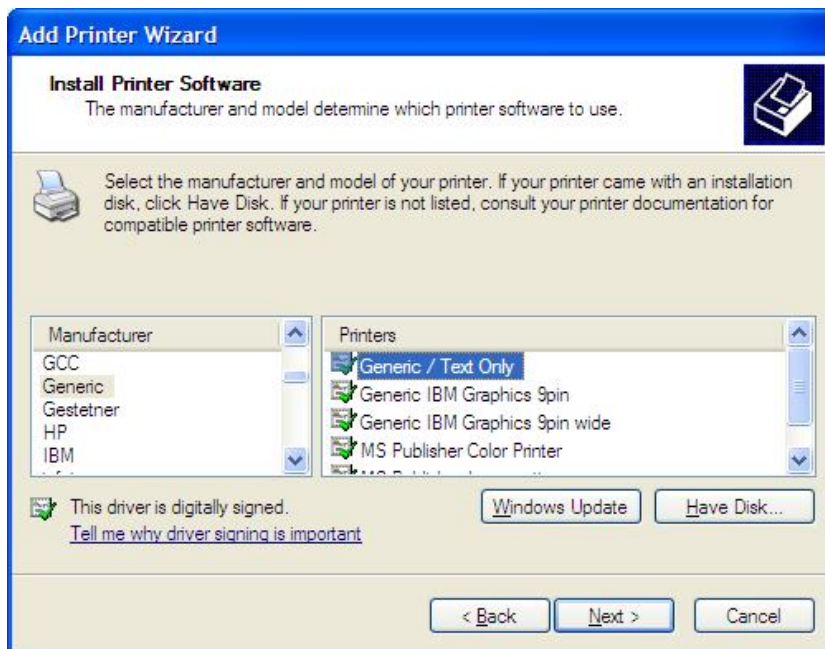
The Printer Wizard continues and you need to select “Local printer attached to this computer” and uncheck the “Automatically detect...” as shown below and click “Next” to continue



Next you need to select the printer port in this case you select LPT1: (Default) and then click “Next” to continue.

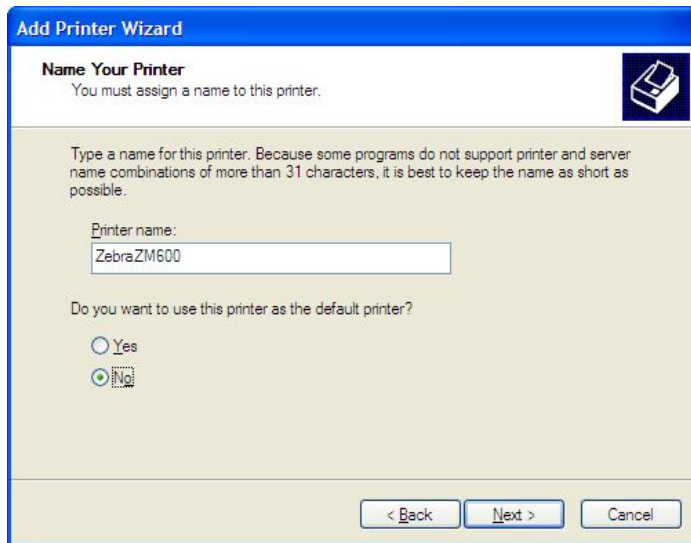


Next scroll down the Manufacturer list on the left side of the next window until you find “Generic” then on the right hand side select “Next”



On to the next Step...

Now we need to name the printer go ahead and name it: ZebraZM600
Also make sure this is not the default printer Select “No” and then hit “Next” to continue



Add Printer Wizard

Name Your Printer
You must assign a name to this printer.

Type a name for this printer. Because some programs do not support printer and server name combinations of more than 31 characters, it is best to keep the name as short as possible.

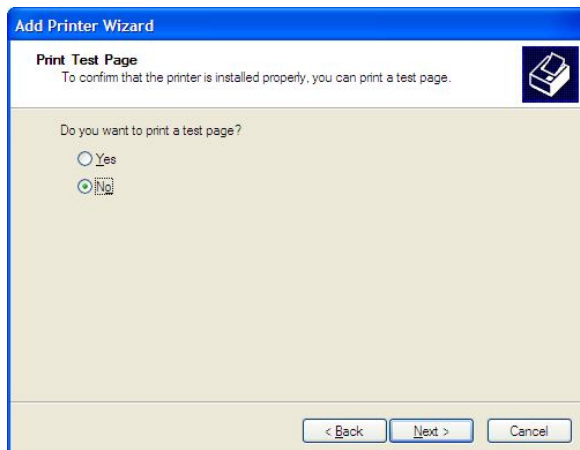
Printer name:
ZebraZM600

Do you want to use this printer as the default printer?

☐ Yes
☒ No

< Back Next > Cancel

Next we can skip printing a test page select “No” and hit “Next”



Add Printer Wizard

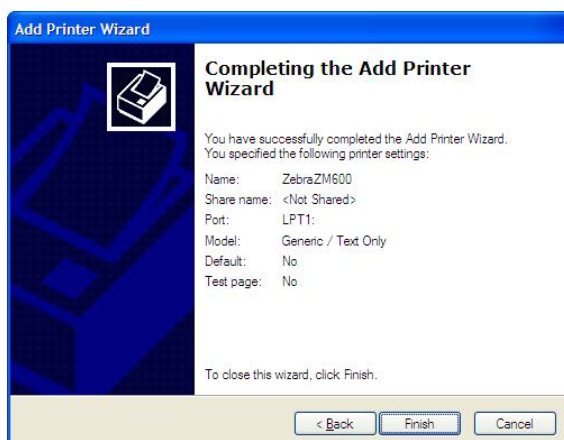
Print Test Page
To confirm that the printer is installed properly, you can print a test page.

Do you want to print a test page?

☐ Yes
☒ No

< Back Next > Cancel

Then hit “Finish” and your done with this step!



Add Printer Wizard

Completing the Add Printer Wizard

You have successfully completed the Add Printer Wizard.
You specified the following printer settings:

Name:	ZebraZM600
Share name:	<Not Shared>
Port:	LPT1:
Model:	Generic / Text Only
Default:	No
Test page:	No

To close this wizard, click Finish.

< Back Finish Cancel