

Appropriately named the Fusion™ System, Truth Hardware has successfully merged two separate pieces of window hardware into one completely revolutionary system. Truth has designed a system where the tilt latches are hidden beneath the check rail and are actuated by the same lever as the lock. With just one hand, the homeowner can unlock the window and release the tilt latches. The Fusion system is loaded with features at a very affordable price.

TRUTH'S FUSION IS ALL ABOUT VERSATILITY

The Fusion System is designed to give you choices. First, both tilt latches are actuated by a single lock/tilt latch mechanism. This mechanism can be located anywhere on the check rail, so if you prefer to use more than one lock on the rail, you have the option of adding a matching sash lock.

With the Fusion system you won't have to stock complete locks in all your different color offerings. There is a standard base assembly that screws into your check rail. Using Truth's patented technology, the stylish housing and lever assembly securely attaches to the base allowing you to efficiently manage your inventory. This "fastenerless" cover design gives the window a cleaner appearance than other checkrail options and also allows for easy removal of the hardware to make it more convenient to paint or stain the window following its installation.

Perhaps the most impressive feature of this system is that it can be used on any-sized window because you cut the connecting strap to its appropriate length after the hardware is installed in the window. What could be easier?

FEATURES & BENEFITS:

- Available with trigger actuated latches - prevents marring wood when windows are tilted back in. Latches without triggers used primarily in vinyl window applications, are also available.
- Lock and tilt latch release are actuated by one mechanism - allows you the option of using either single or multiple locks on the window.
- Pick-resistant base plate increases security.



Fusion System (locked)



Tilt Latches (Vinyl Application)



Tilt Latches (Wood Application)

- Latches are hidden into the checkrail - Lets your customer see more of the beauty of your window, rather than the hardware.
- Totally adjustable to any size window - You cut the connecting strap to the desired length after hardware is installed in the window.
- Non-handed latches - Less inventory costs and less hassle on the production line.
- Housing assembly is separate from base - Increases inventory efficiencies by only having to inventory the housing in different colors or finishes - not the entire locking system.
- Stylish fastenerless housing - Makes it easy to remove for staining or finishing.
- Easy, intuitive one-handed operation.
- Corrosion Resistant - Composite construction provides a corrosion resistant system.

LOGO OPTIONS:

You can personalize the Fusion Lock with your logo. Truth's pad printing

process is a great way to highlight your company's identity.

WARRANTY:

Protected under the terms of the Truth Warranty for Window & Door Manufacturers and Authorized Distributors. Refer to Truth's Terms & Conditions for further details.

MATERIAL:

Housing assembly is powder coated diecast zinc. The lock base and latch assemblies are of a composite construction consisting of engineered plastics, zinc and stainless steel. The latch assembly and lock assembly are tied together by a corrosion resistant strap.

FINISH:

Electrostatically applied, durable coatings that provide excellent resistance to chipping, scratching and corrosion while maintaining color stability for years in direct sunlight. Please refer to Truth's color chart for examples of Truth's most

popular finish options. Truth also offers a wide range of decorative “plated” finishes - contact Truth for additional information on availability of these finishes on specific product lines.

ORDERING INFORMATION:

Order the Fusion System by individual components:

#19.70.XX.100 - Housing/Lever Assembly

#19.71.00.100 - Lock Base

- Wood Window Application
 - **#12617** - Latch with trigger
 - **#12743** - Latch without trigger
- Vinyl Window Application
 - **#12744** - Bolt location "A"
 - **#12745** - Bolt location "C"

Note: Latches with variable trigger lengths available. Contact Truth for additional information.

Latches (2 required)

#22196 - Strap (24,000 foot roll)

#41333.XX - Keeper, or

#43008.XX - Keeper

OPTIONAL:

#19.73.XX.100 - Secondary Housing/Lever Assembly

#19.72.00.100 - Secondary Lock Base

Required Tools for connecting the strap (Not included):

Two 1/16" Allen Wrenches

RECOMMENDED SCREWS:

Base: 2 - #8 Pan head screws

Keeper: 2 - #8 Flat head screws

Latches: 2 -#6 Flat head

Types of screws required determined by material of profile used. Refer to drawings for complete information on screw type and quantity needed (sold separately). For additional information on screw selection - see Truth Tips.

TRUTH TIPS:

1. When two locks are used on one window, the placement of each lock, with respect to its keeper, becomes very critical to maintain a constant weather seal on all sides of the window and to insure that each lock engages properly with its keeper.

2. For vinyl window applications, mounting screws should pass through two PVC walls, or one PVC wall and one insert wall

INCLUDE TRUTH SPECS ON YOUR NEXT WINDOW PROJECT

Recess mounted check rail lock whose lever activates the enclosed tilt latches shall be included which will increase security and weather seal tightness. The lock must provide easy operation and provide a pick resistant base plate which protects the cam thus providing increased security.

Window check rail locks will be of internal cam design to provide optimum pull-in to aid in sealing the meeting rails.

Window locks and tilt latches will be 19 Series Fusion System as manufactured by Truth Hardware.

FIG. 1 FUSION SNAP LOCK FOR WOOD AND VINYL APPLICATIONS

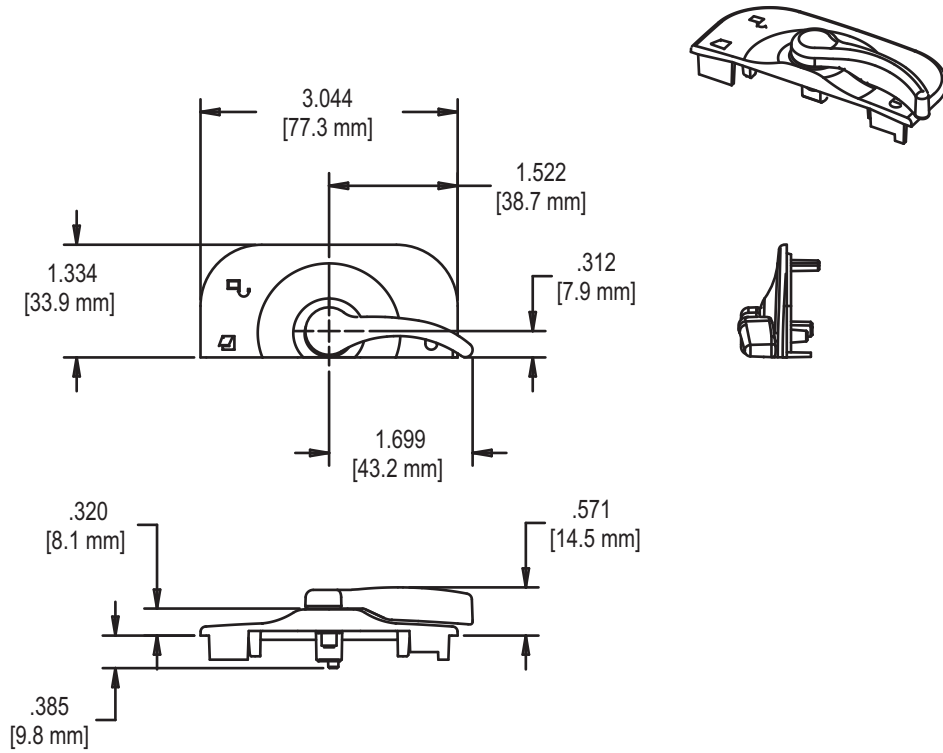
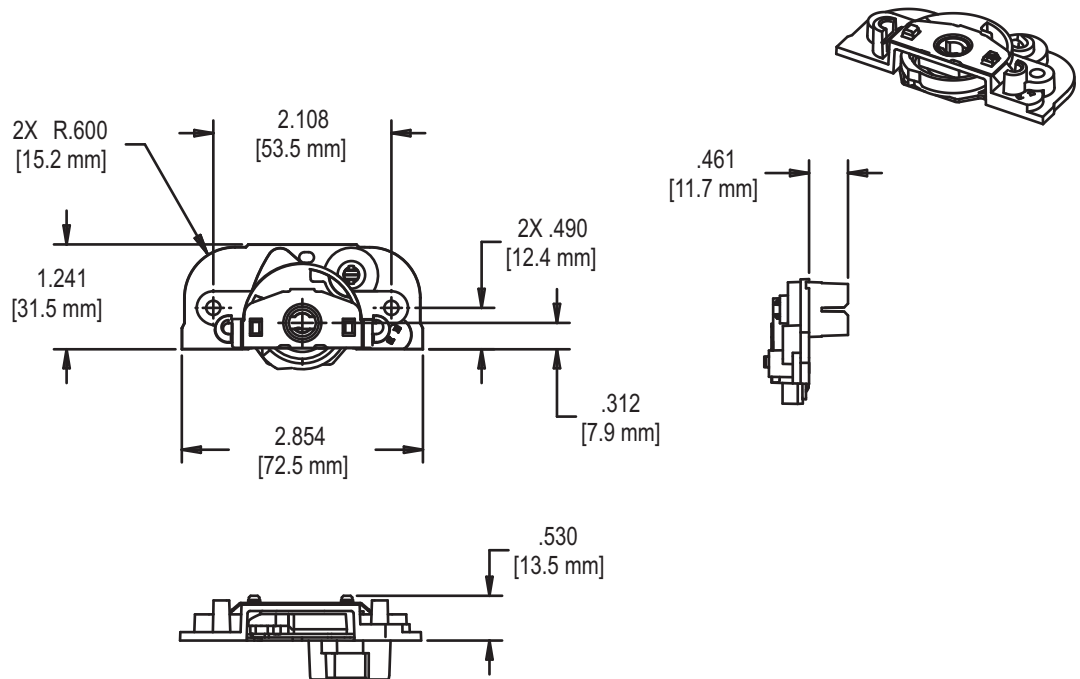


FIG. 2 19.71.00.100 BASE FOR WOOD AND VINYL APPLICATIONS



RECOMMENDED SCREWS:

(QTY 2)#8 PAN HEAD SCREWS (LENGTH AND THREAD TYPE DETERMINED BY PROFILE)

FIG. 3 FUSION LOCK ASSEMBLY FOR WOOD APPLICATION

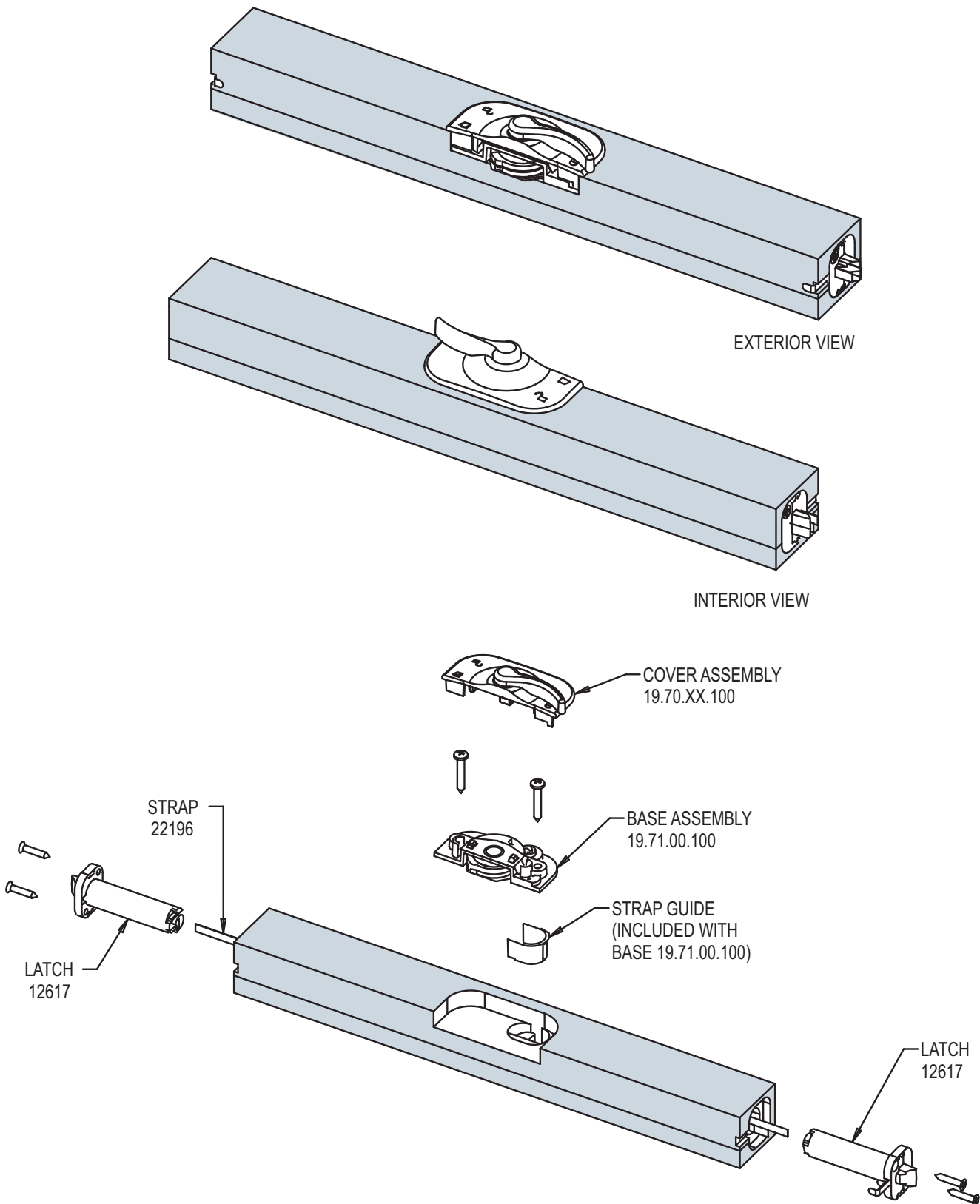


FIG. 4 FUSION KEEPER ASSEMBLY FOR WOOD APPLICATION

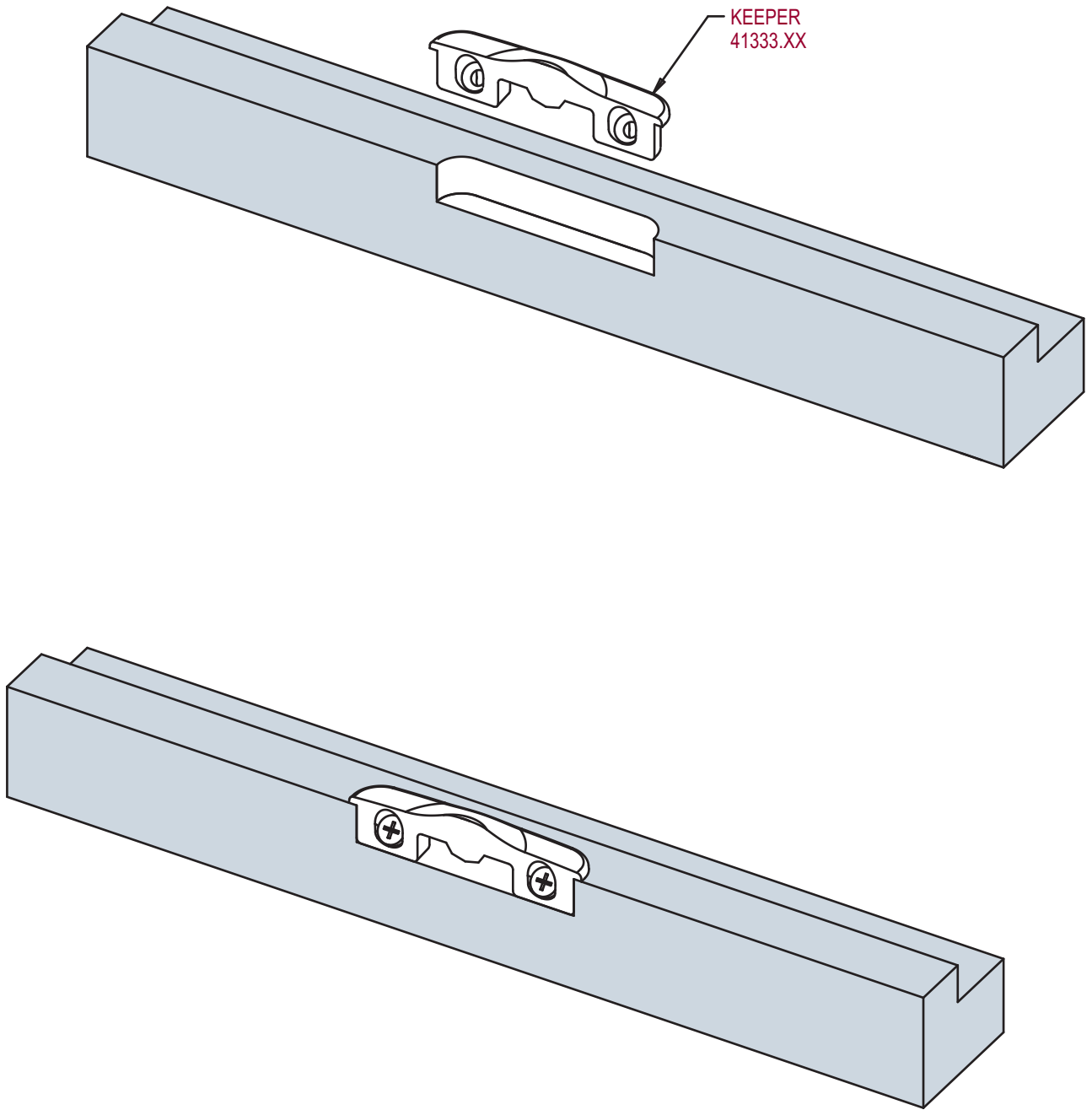


FIG. 5 FUSION LOCK APPLICATION FOR WOOD APPLICATIONS

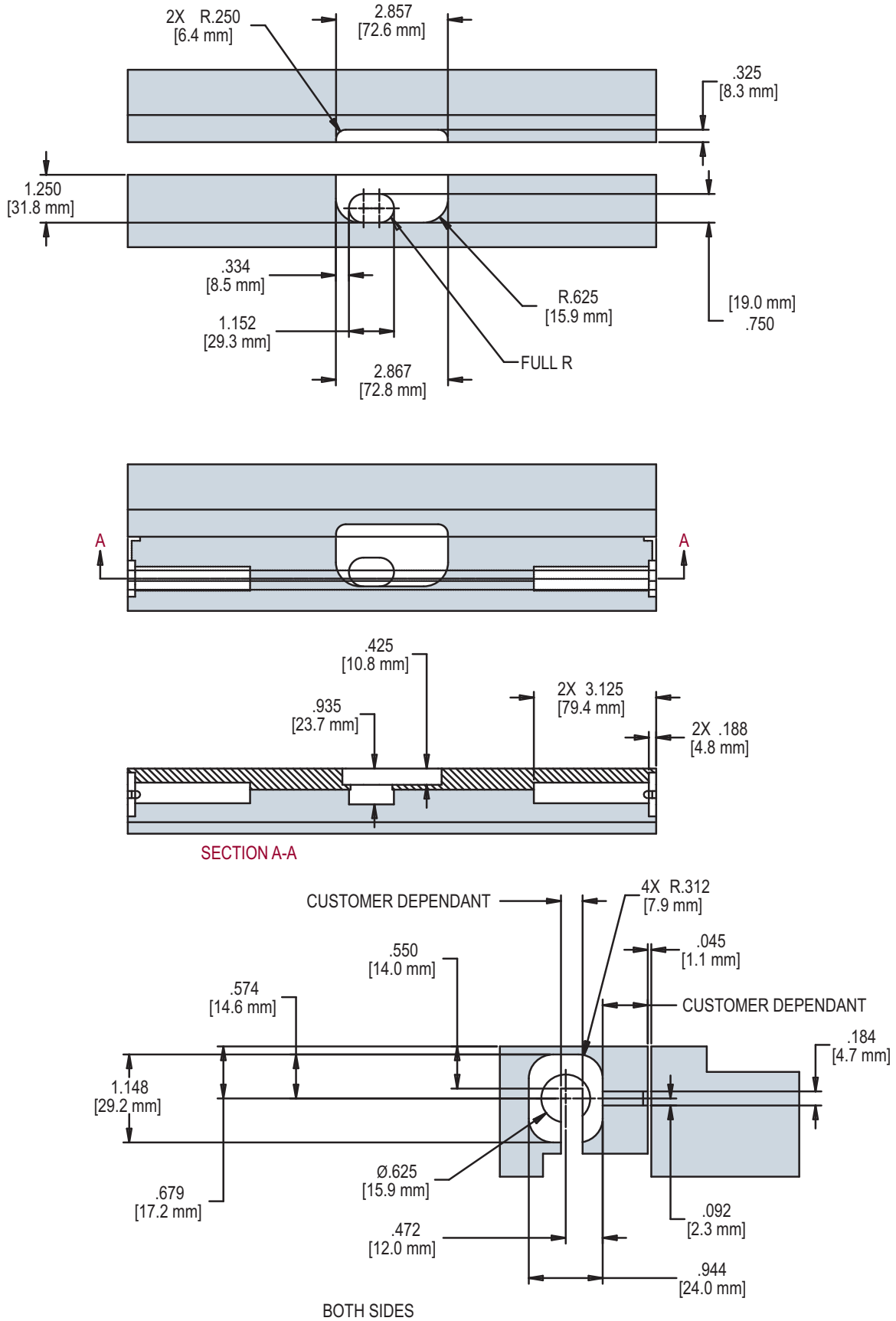
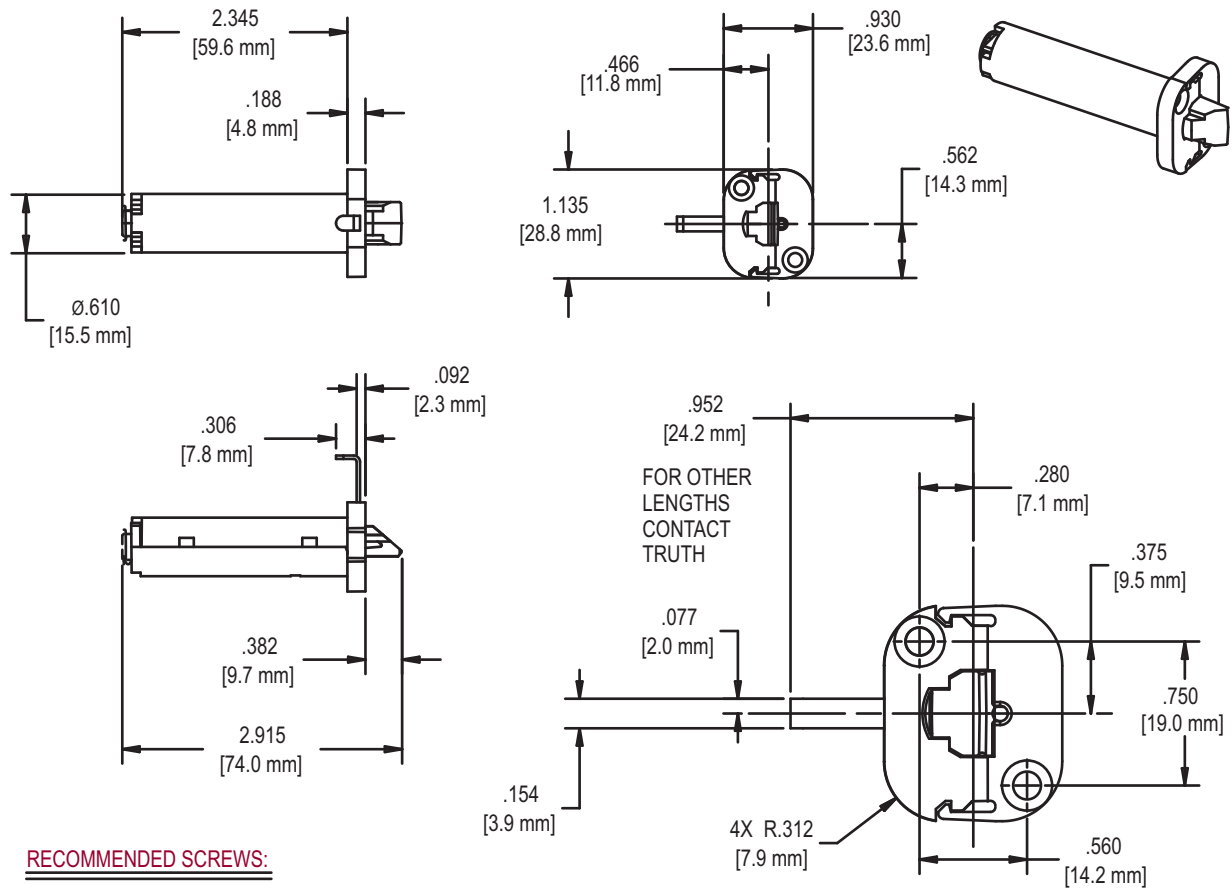


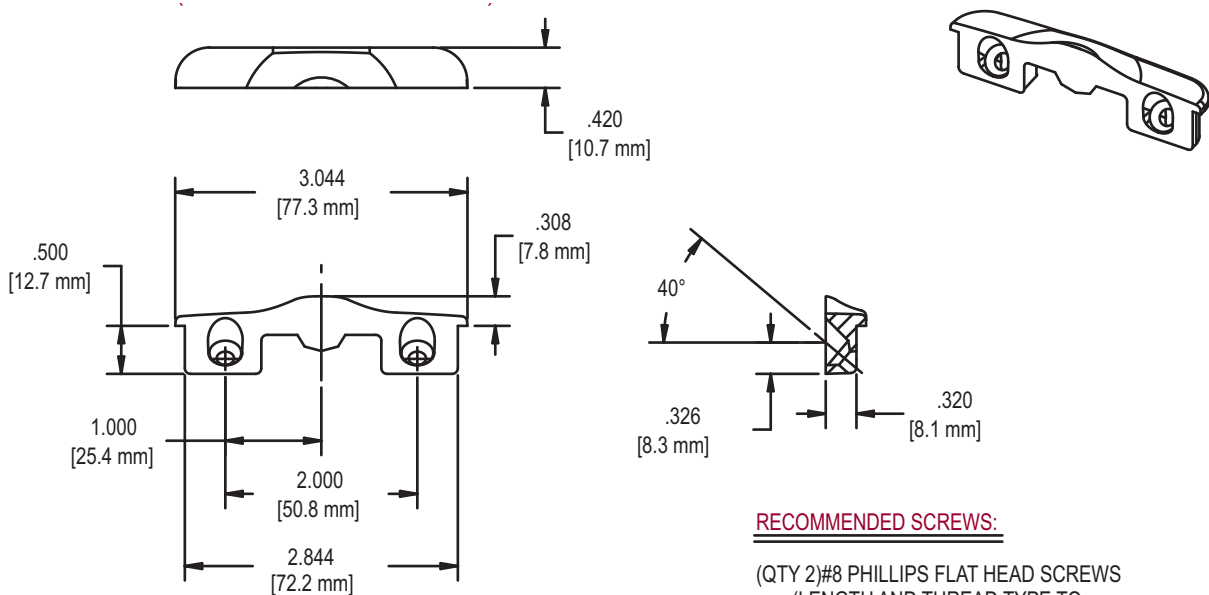
FIG. 6 FUSION LATCH 12617 (FOR WOOD APPLICATIONS)



RECOMMENDED SCREWS:

(QTY 2) #4, #5, or #6 PHILLIPS FLAT HEAD SCREWS
(LENGTH AND THREAD TYPE TO BE DETERMINED BY PROFILE)

FIG. 7 KEEPER 41333 (FOR WOOD APPLICATIONS)



CONTACT TRUTH FOR OTHER OPTIONS

RECOMMENDED SCREWS:

(QTY 2) #8 PHILLIPS FLAT HEAD SCREWS
(LENGTH AND THREAD TYPE TO BE DETERMINED BY PROFILE)

FIG. 8 FUSION LOCK ASSEMBLY (FOR VINYL APPLICATIONS)

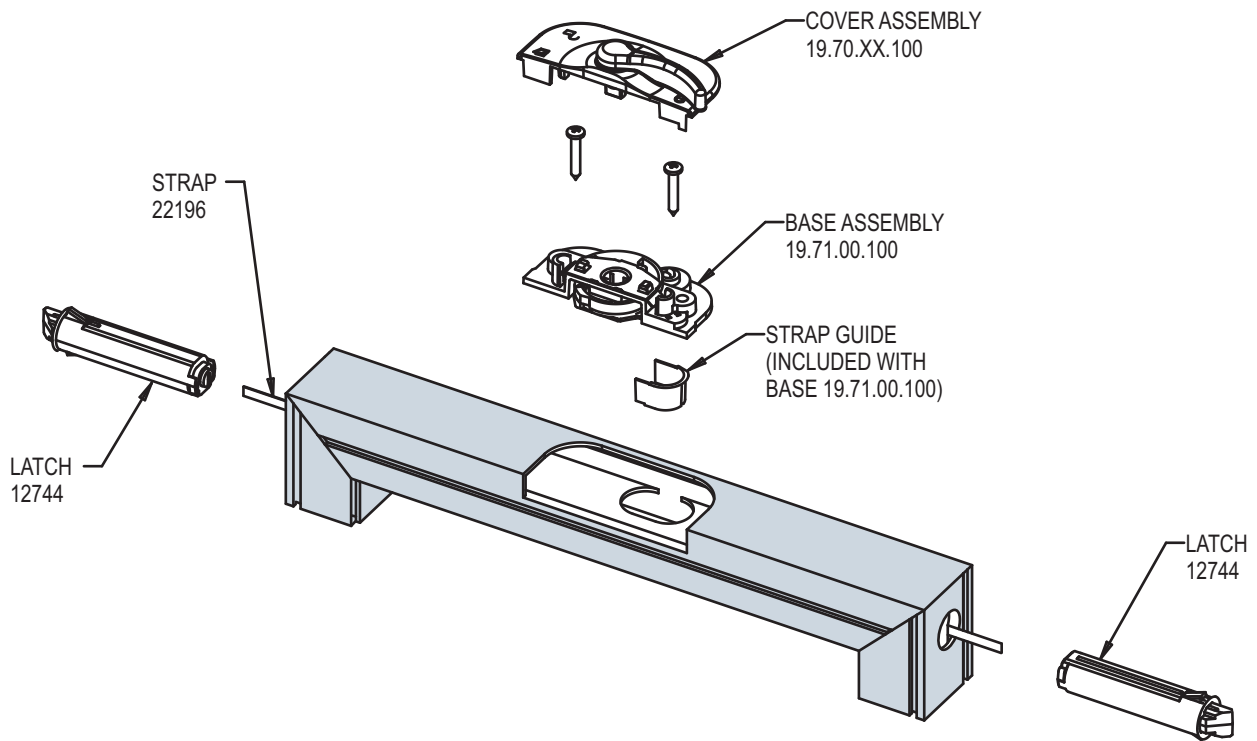
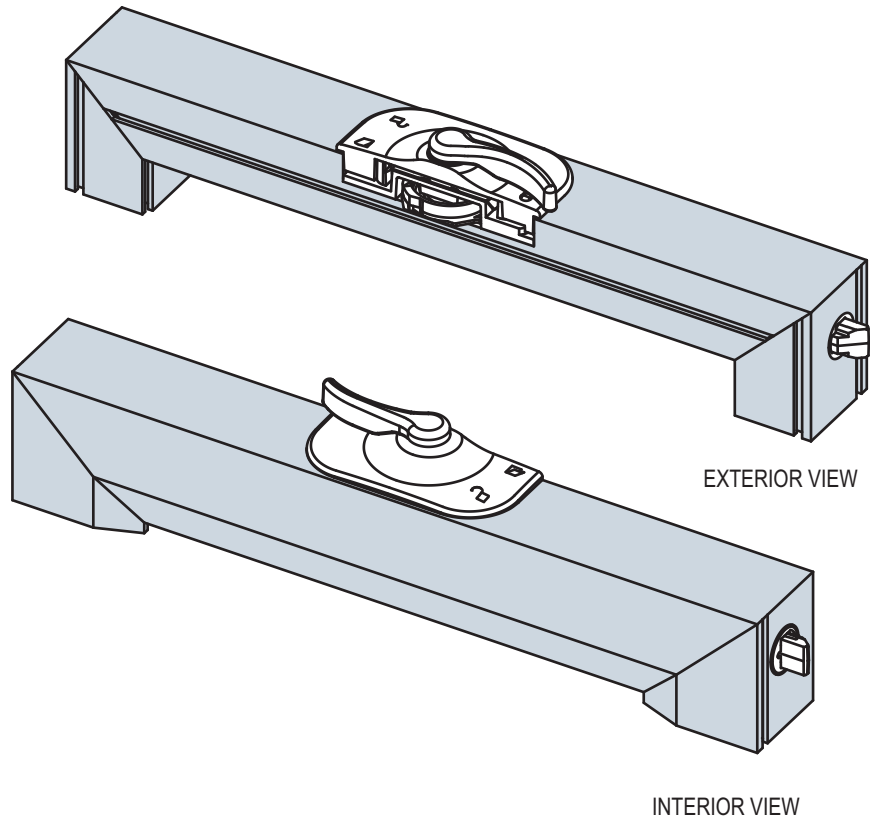


FIG. 9 FUSION KEEPER ASSEMBLY (FOR VINYL APPLICATIONS)

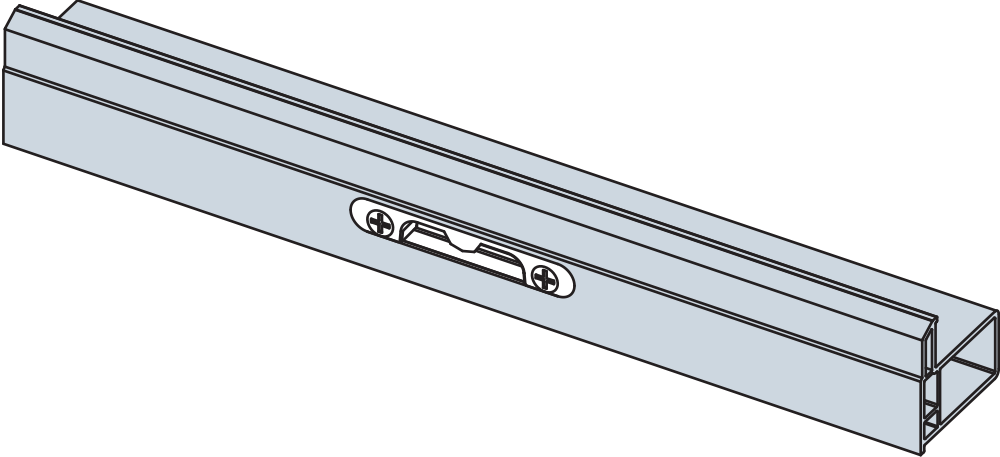
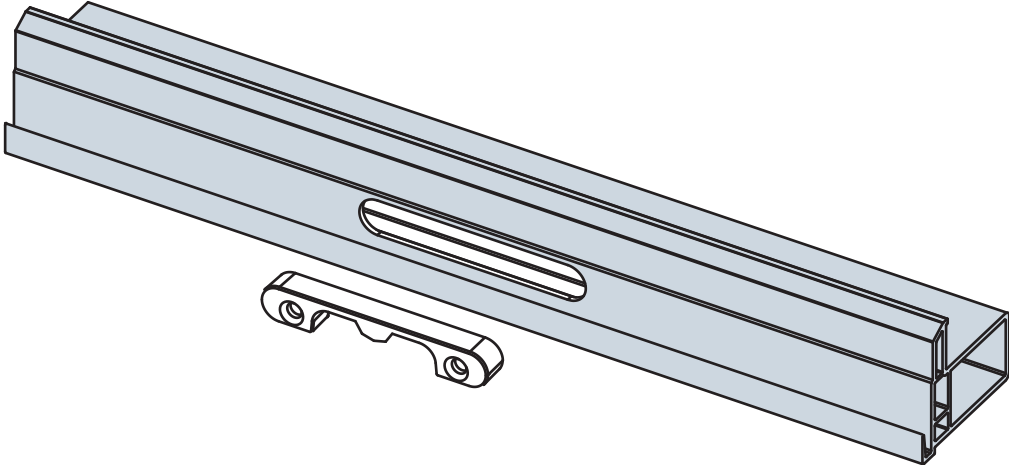


FIG. 10 FUSION KEEPER APPLICATION (FOR VINYL WINDOW APPLICATIONS)

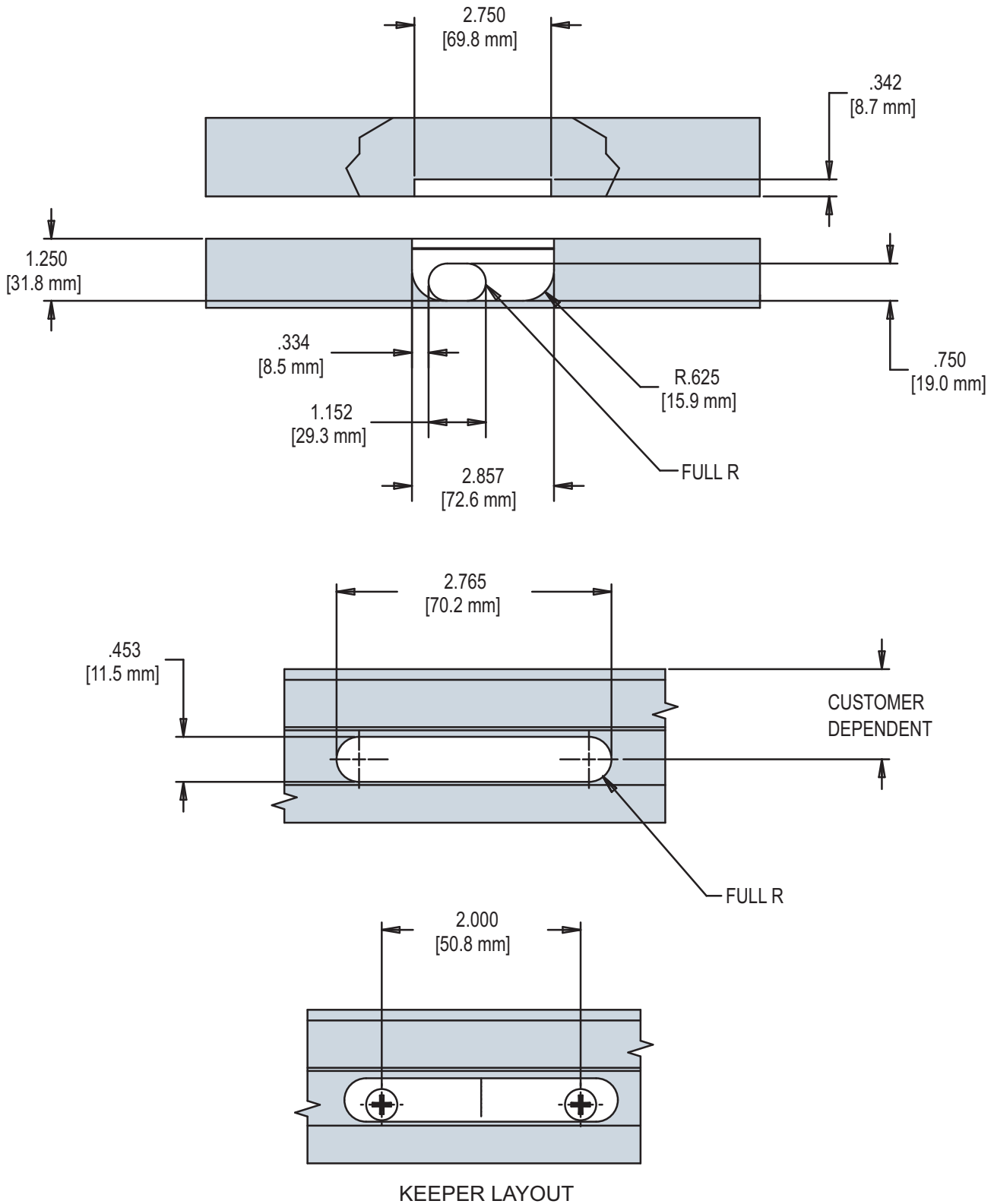
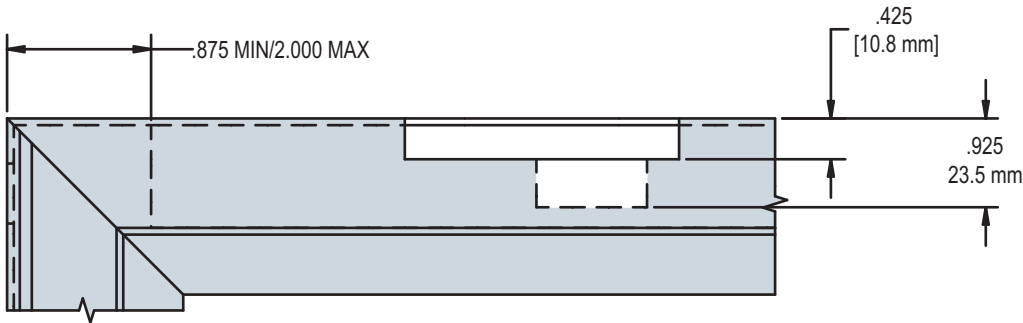
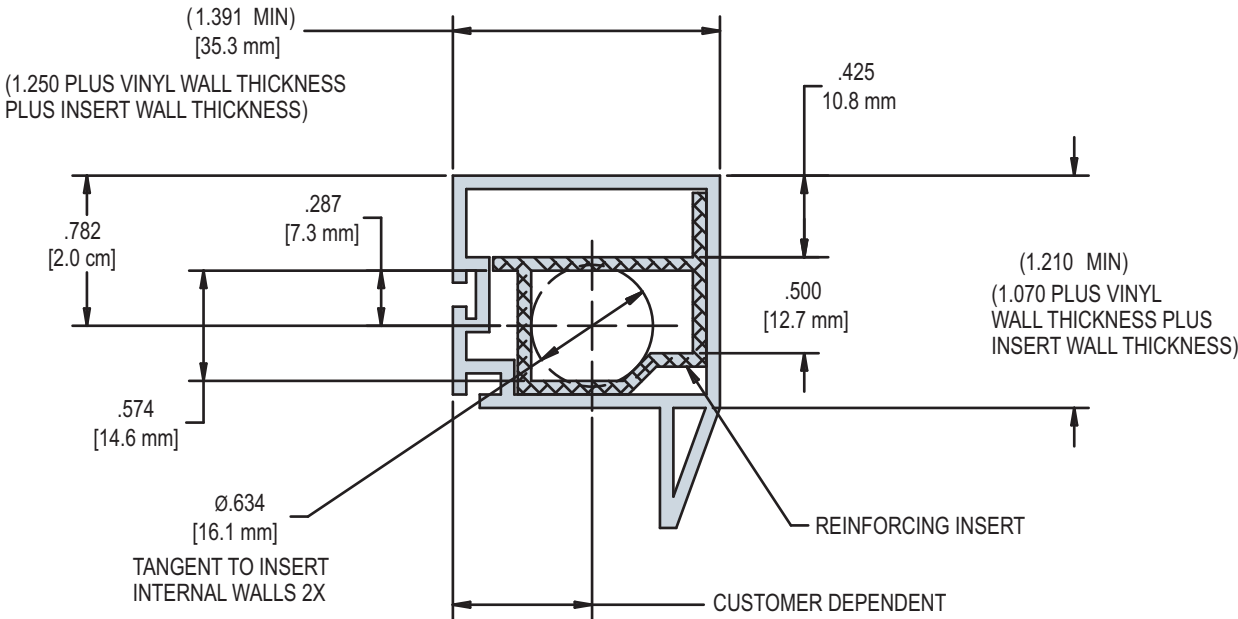


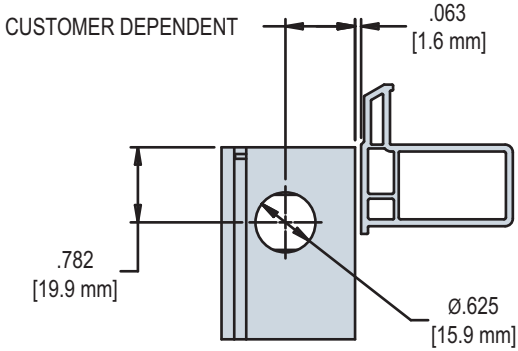
FIG. 11 FUSION APPLICATION FOR VINYL WINDOWS WITH INSERTS



REINFORCING INSERT POSITIONING



TOP LOCK RAIL WITH INSERT



15k

